

GENERAL NOTES:

FASTEN ASSEMBLY TO A 6mm STEEL PLATE BY FOUR M10 X 40mm LONG HEX HEAD BOLTS, NUTS AND LOCK WASHERS

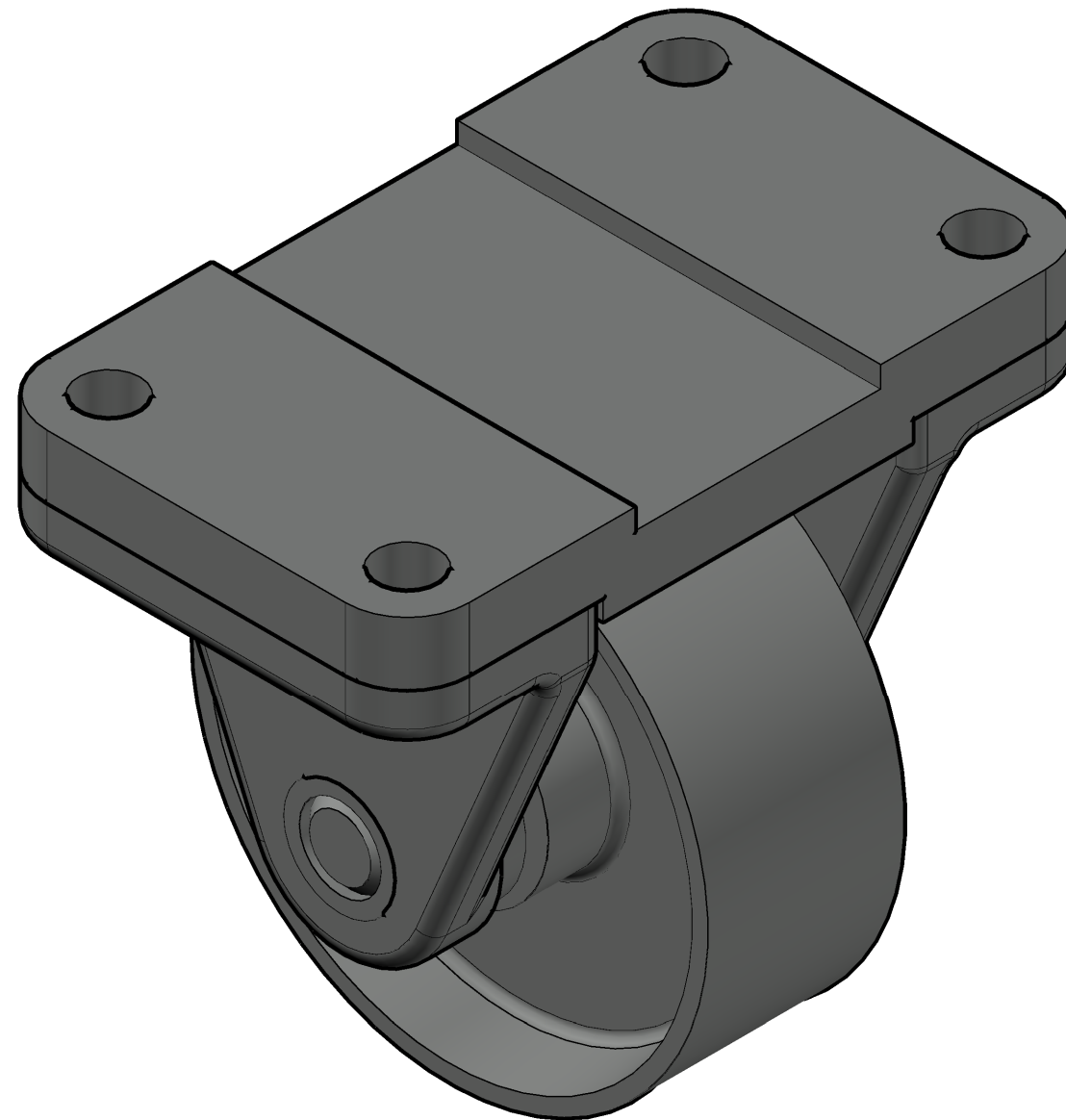
ROUNDS AND FILLETS R3

PARTS LIST			
ITEM	QTY.	PART NAME	MATERIAL
1	1	TOP PLATE	MALLEABLE IRON
2	1	WHEEL	MALLEABLE IRON
3	2	AXLE SUPPORT	MALLEABLE IRON
4	1	AXLE	SAE 1020
5	2	BUSHING	BRONZE



DIGITAL DESIGN
GRAPHICS
TECHNOLOGY

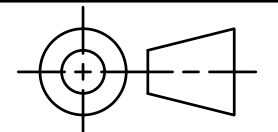
WWW.DDGT.NET



CASTER ASSEMBLY
1:1

LEGEND:

- ∅ DIAMETER
- R RADIUS
- ° DEGREES
- SPOTFACE



TOLERANCES UNLESS SPECIFIED:
DECIMAL INCHES:
X = +0.20
XX = +0.10
XXX = +0.05
FRACTIONAL = 1/64"
ANGLES +1 DEGREE
SURFACES

CLASS: DDGT120

ASSIGNMENT # 60

AUTOCAD DRAWING NAME:

FIG # X = XXX

MANAGER: G. STROMMEN

DRAFTER: P. BUSCHER

DATE: 11/13/2024

SCALE: AS NOTED

PAGE # 1 OF 4

METRIC

FIT	BETWEEN PARTS
H8/f7	"AXLE" AND "BUSHING"
H7/p6	"AXLE SUPPORT" AND "BUSHING"
H8/f7	"WHEEL" AND "AXLE"

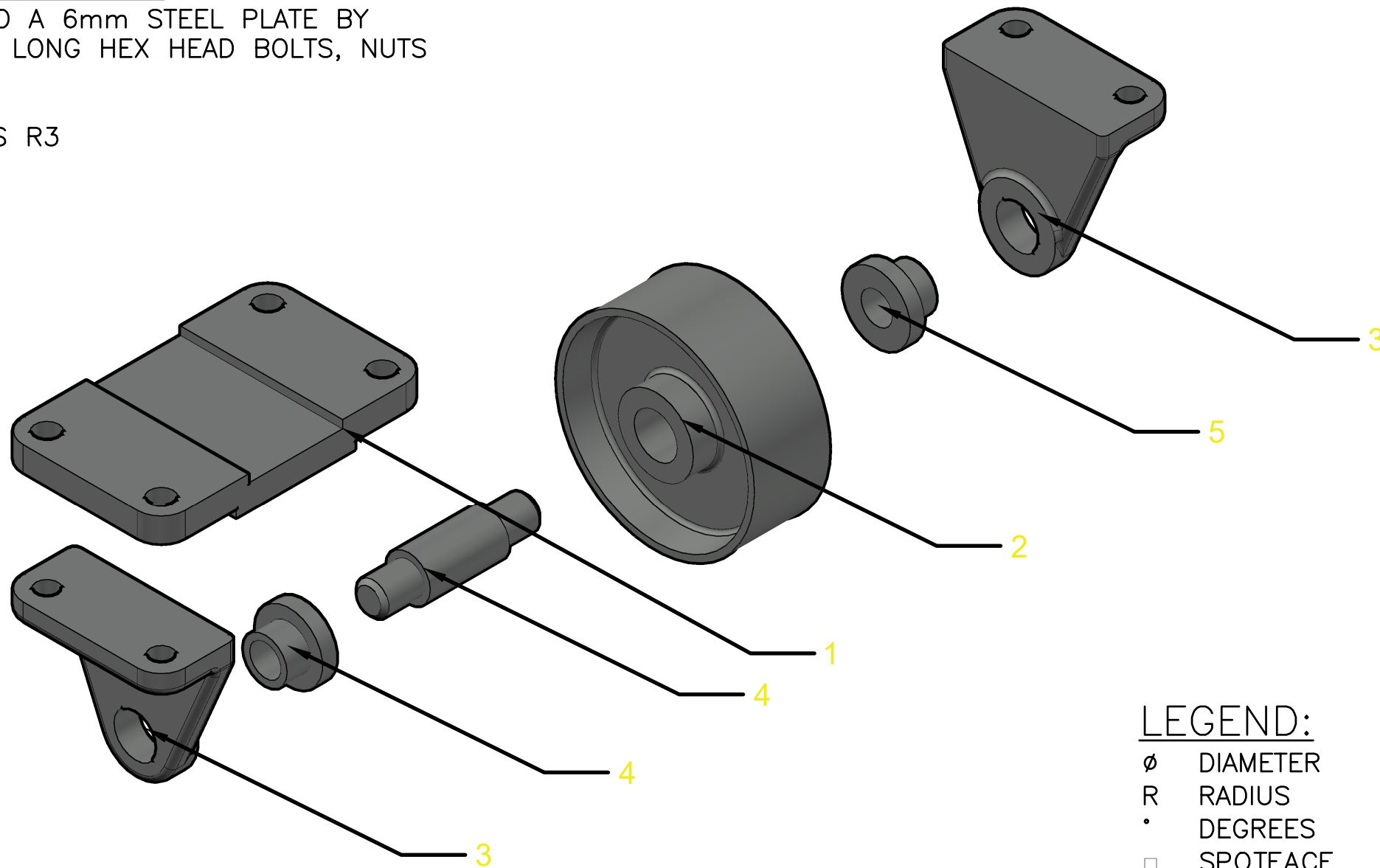
PARTS LIST		
ITEM	QTY.	PART NAME
1	1	TOP PLATE
2	1	WHEEL
3	2	AXLE SUPPORT
4	1	AXLE
5	2	BUSHING

DDGT
 DIGITAL DESIGN
 GRAPHICS
 TECHNOLOGY
 WWW.DDGT.NET

GENERAL NOTES:

FASTEN ASSEMBLY TO A 6mm STEEL PLATE BY FOUR M10 X 40mm LONG HEX HEAD BOLTS, NUTS AND LOCK WASHERS

ROUNDS AND FILLETS R3

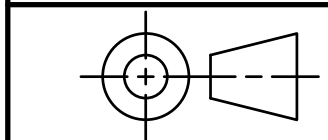


METRIC

CASTER EXPLODED ASSEMBLY
 1:2

LEGEND:

- ∅ DIAMETER
- R RADIUS
- ° DEGREES
- SPOTFACE



TOLERANCES UNLESS SPECIFIED:
 DECIMAL INCHES:
 X = +0.20
 XX = +.010
 XXX = +.005
 FRACTIONAL = 1/64"
 ANGLES +1 DEGREE
 SURFACES $\sqrt{\text{V}}$

CLASS: DDGT120

ASSIGNMENT # 60

AUTOCAD DRAWING NAME:

FIG # X = XXX

MANAGER: G. STROMMEN

DRAFTER: P. BUSCHER

DATE: 11/13/2024

SCALE: AS NOTED

PAGE # 2 OF 4

GENERAL NOTES:

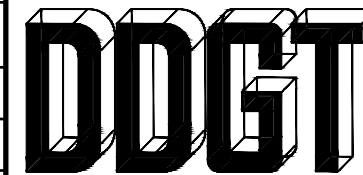
FASTEN ASSEMBLY TO A 6mm STEEL PLATE BY FOUR M10 X 40mm LONG HEX HEAD BOLTS, NUTS AND LOCK WASHERS

ROUNDS AND FILLETS R3

LEGEND:

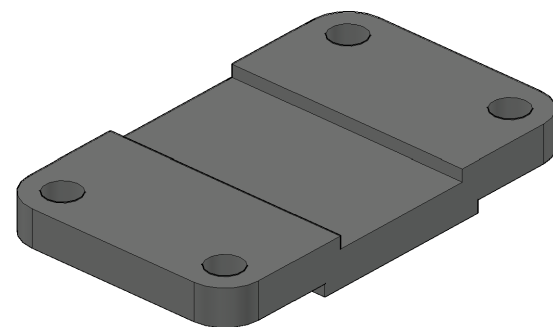
- ∅ DIAMETER
- R RADIUS
- ° DEGREES
- SPOTFACE

PARTS LIST		
ITEM	QTY.	PART NAME
1	1	TOP PLATE
2	1	WHEEL

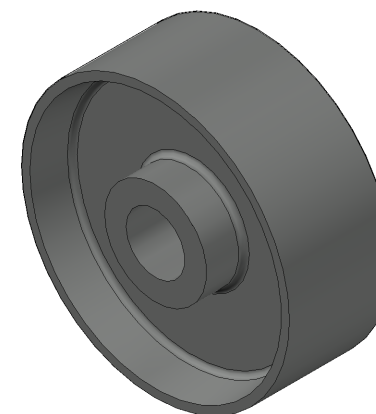
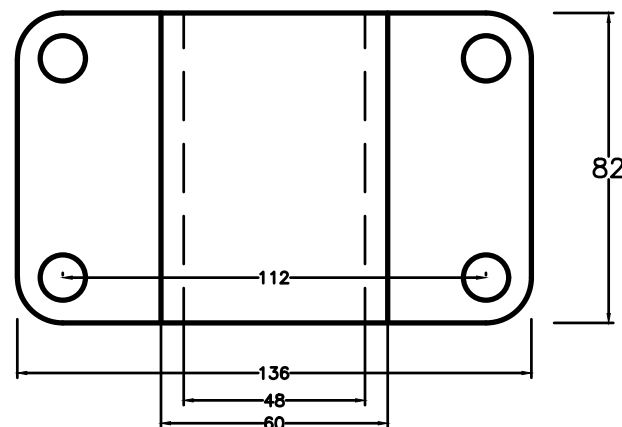
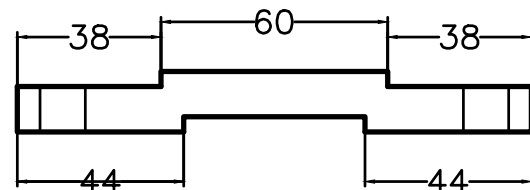


DIGITAL DESIGN
GRAPHICS
TECHNOLOGY

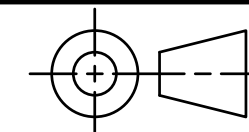
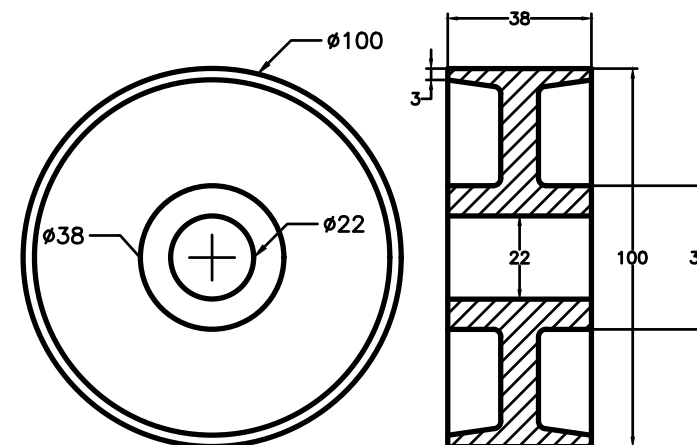
WWW.DDGT.NET



TOP PLATE
SCALE 1:2



WHEEL
SCALE 1:2



TOLERANCES UNLESS SPECIFIED:
DECIMAL INCHES:
X = +0.20
XX = +0.10
XXX = +0.05
FRACTIONAL = 1/64"
ANGLES +1 DEGREE
SURFACES

CLASS: DDGT120

ASSIGNMENT # 60

AUTOCAD DRAWING NAME:

FIG # X = XXX

MANAGER: G. STROMMEN

DRAFTER: P. BUSCHER

DATE: 11/13/2024

SCALE: AS NOTED

PAGE # 3 OF 4

METRIC

GENERAL NOTES:

FASTEN ASSEMBLY TO A 6mm STEEL PLATE BY FOUR M10 X 40mm LONG HEX HEAD BOLTS, NUTS AND LOCK WASHERS

ROUNDS AND FILLETS R3

LEGEND:

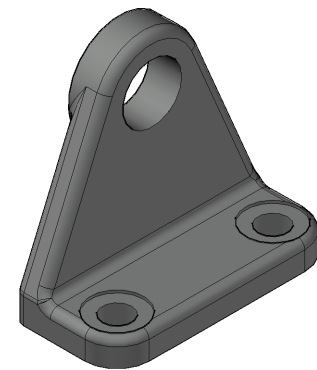
- ∅ DIAMETER
- R RADIUS
- ° DEGREES
- | SPOTFACE

PARTS LIST		
ITEM	QTY.	PART NAME
3	2	AXLE SUPPORT
4	1	AXLE
5	2	BUSHING

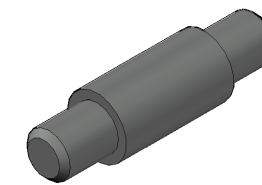
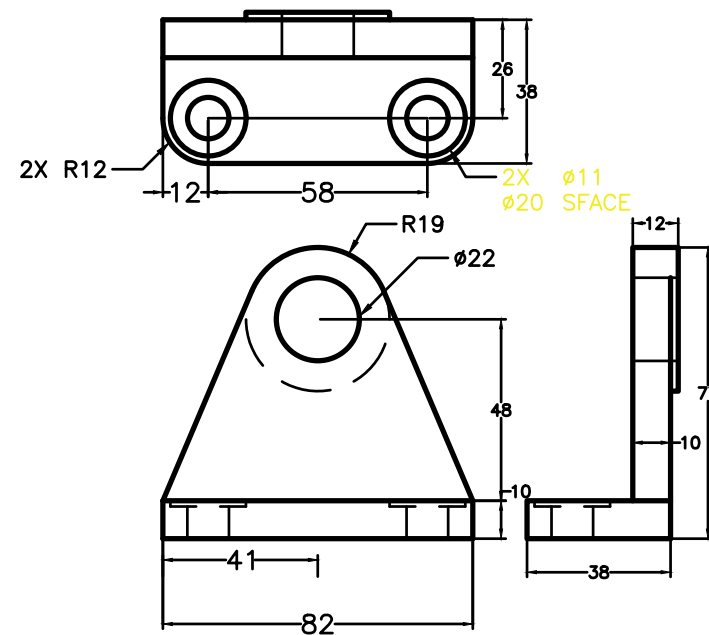


DIGITAL DESIGN
GRAPHICS
TECHNOLOGY

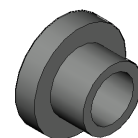
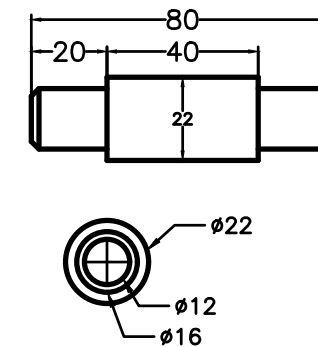
WWW.DDGT.NET



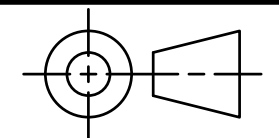
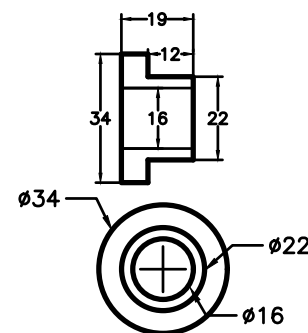
AXEL SUPPORT
SCALE 1:2



AXEL
SCALE 1:2



BUSHING
SCALE 1:2



TOLERANCES UNLESS SPECIFIED:
DECIMAL INCHES:
X = +.020
XX = +.010
XXX = +.005
FRACTIONAL = 1/64"
ANGLES +1 DEGREE
SURFACES

CLASS: DDGT120

ASSIGNMENT # 60

AUTOCAD DRAWING NAME:

FIG # X = XXX

MANAGER: G. STROMMEN

DRAFTER: P. BUSCHER

DATE: 11/13/2024

SCALE: AS NOTED

PAGE # 4 OF 4

METRIC