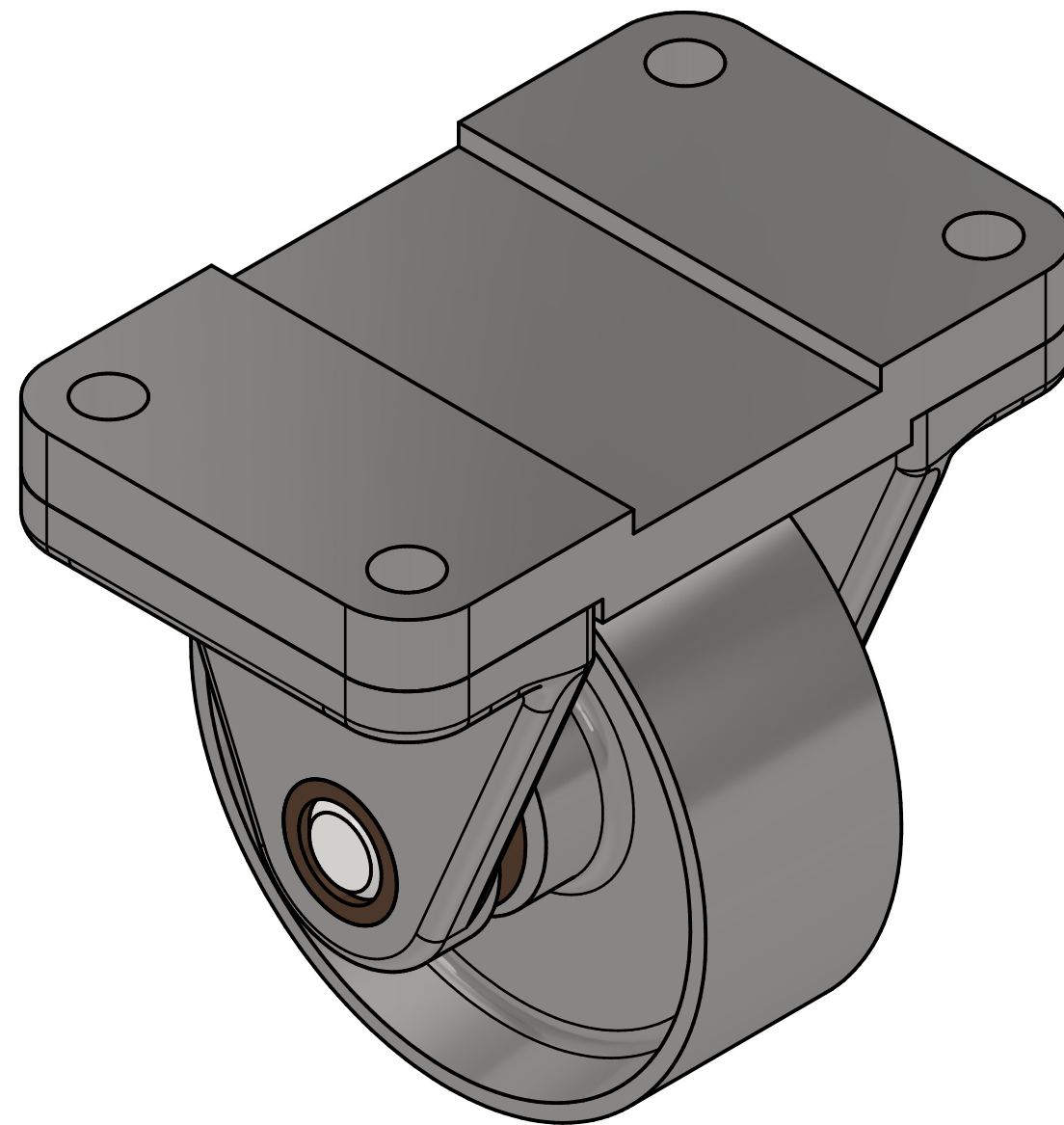


PARTS LIST			
ITEM	QTY	PART NUMBER	MATERIAL
1	1	TOP PLATE	MALLEABLE IRON
2	1	WHEEL	MALLEABLE IRON
3	2	AXLE SUPPORT	MALLEABLE IRON
4	1	AXLE	SAE 1020
5	2	BUSHING	BRONZE



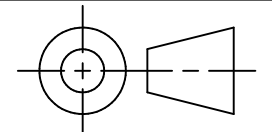
DIGITAL DESIGN
GRAPHICS
TECHNOLOGY

WWW.DDGTNET.NET



LEGEND:

- ∅ DIAMETER
- R RADIUS
- ° DEGREES
- ┌ SPOTFACE/
COUNTERBORE



TOLERANCES UNLESS SPECIFIED
MILLIMETERS:
WHOLE NUMBERS = ±.5
X = ±.25
XX = ±.12
FRACTIONAL ±1/64"
ANGLES ±1 DEGREE
SURFACES ³²✓

CLASS: DDGT 120

ASSIGNMENT #:

INVENTOR DRAWING NAME:
CASTER

FIG #: 9-51

MANAGER: G. STROMMEN

DRAFTER: J. GALLAGHER

DATE: 11/24/2025

SCALE: AS NOTED

PAGE #: 1 OF 4

GENERAL NOTES:

FASTEN ASSEMBLY TO A 6mm STEEL PLATE BY FOUR M 10 X 40mm LONG HEX HEAD BOLTS, NUTS, AND LOCK WASHERS.(NOT SHOWN)

SHOW THE STEEL PLATE IN PHANTOM LINES.

ROUNDS AND FILLETS R 3 UNLESS OTHERWISE STATED

METRIC

CASTER ASSEMBLY
SCALE 1 : 1

GENERAL NOTES:

FASTEN ASSEMBLY TO A 6mm STEEL PLATE BY FOUR M 10 X 40mm LONG HEX HEAD BOLTS, NUTS, AND LOCK WASHERS.(NOT SHOWN)

SHOW THE STEEL PLATE IN PHANTOM LINES.

ROUNDS AND FILLETS R 3 UNLESS OTHERWISE STATED

PARTS LIST		
ITEM	QTY	PART NUMBER
1	1	TOP PLATE
2	1	WHEEL
3	2	AXLE SUPPORT
4	1	AXLE
5	2	BUSHING

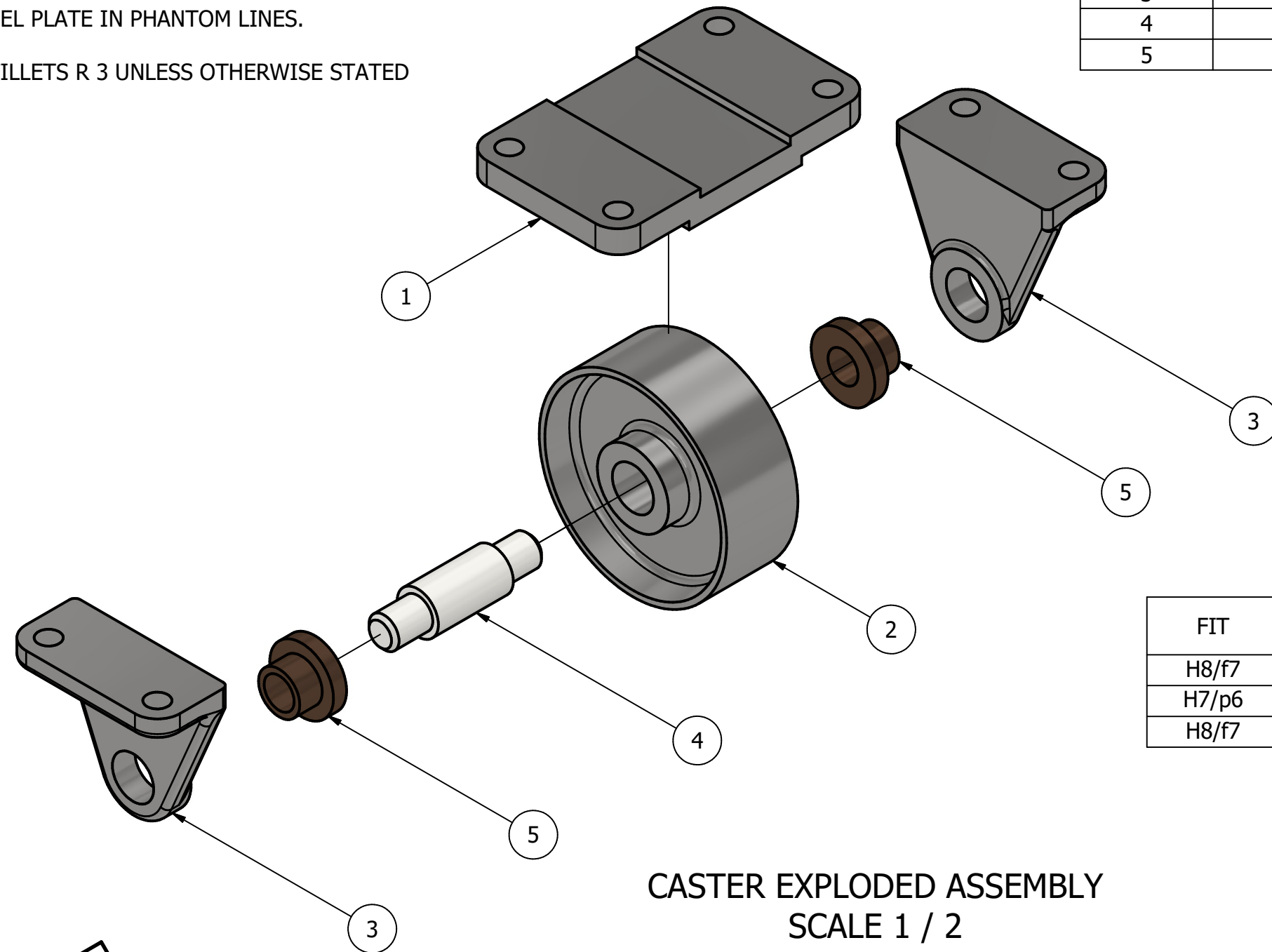


DIGITAL DESIGN
GRAPHICS
TECHNOLOGY

WWW.DDGTNET.NET

LEGEND:

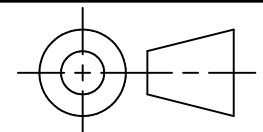
- ∅ DIAMETER
- R RADIUS
- ° DEGREES
- ⌊ SPOTFACE/
COUNTERBORE



FIT	BETWEEN PARTS
H8/f7	4 AND 5
H7/p6	3 AND 5
H8/f7	2 AND 4

CASTER EXPLODED ASSEMBLY
SCALE 1 / 2

METRIC



TOLERANCES UNLESS SPECIFIED
MILLIMETERS:
WHOLE NUMBERS = ±.5
X = ±.25
XX = ±.12
FRACTIONAL ±1/64"
ANGLES ±1 DEGREE
SURFACES ³²✓

CLASS: DDGT 120

ASSIGNMENT #:

INVENTOR DRAWING NAME:
CASTER

FIG #: 9-51

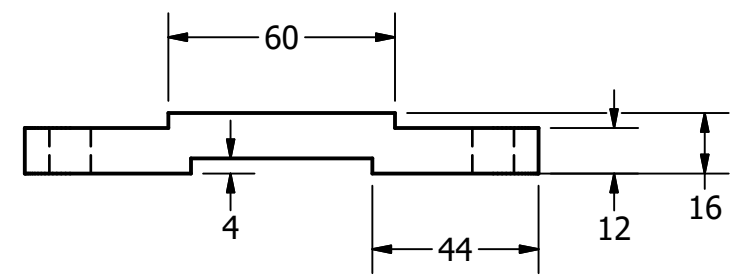
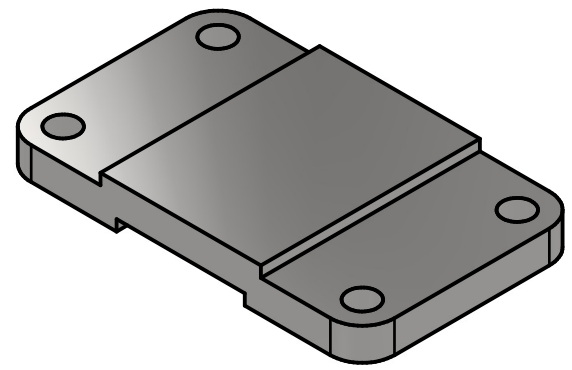
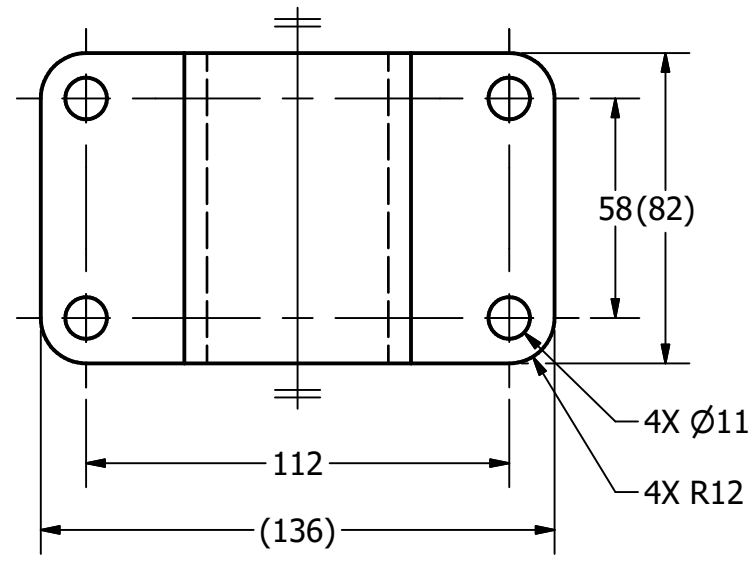
MANAGER: G. STROMMEN

DRAFTER: J. GALLAGHER

DATE: 11/24/2025

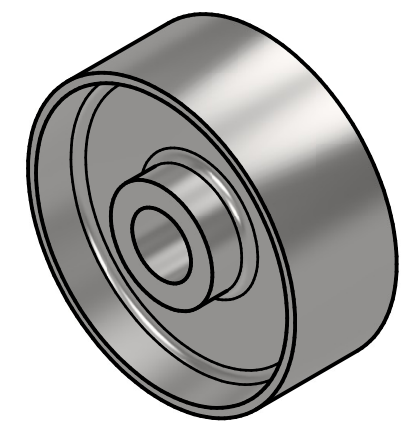
SCALE: AS NOTED

PAGE #: 2 OF 4



TOP PLATE
SCALE 1 / 2

PARTS LIST		
ITEM	QTY	PART NUMBER
1	1	TOP PLATE
2	1	WHEEL



LEGEND:

- ∅ DIAMETER
- R RADIUS
- ° DEGREES
- SPOTFACE/
COUNTERBORE

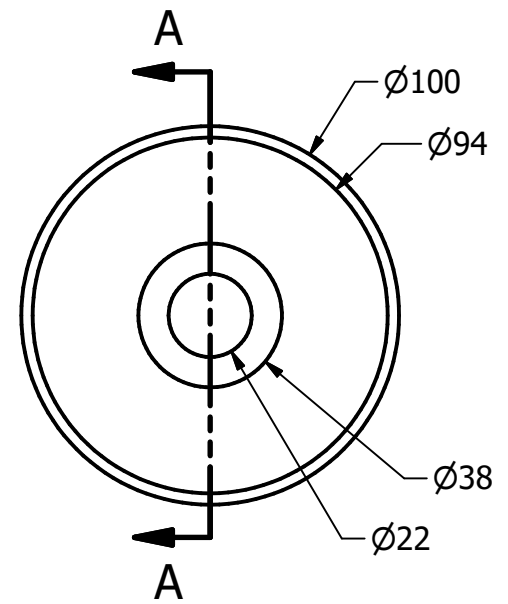
GENERAL NOTES:

FASTEN ASSEMBLY TO A 6mm STEEL PLATE BY FOUR M 10 X 40mm LONG HEX HEAD BOLTS, NUTS, AND LOCK WASHERS.(NOT SHOWN)

SHOW THE STEEL PLATE IN PHANTOM LINES.

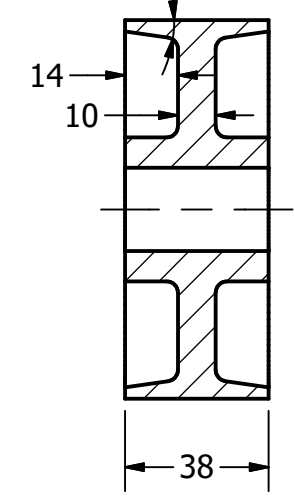
ROUNDS AND FILLETS R 3 UNLESS OTHERWISE STATED

METRIC

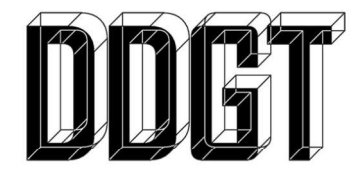


WHEEL
SCALE 1 / 2

8° (BOTH SIDES)

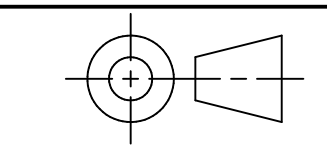


SECTION A-A
SCALE 1 / 2



DIGITAL DESIGN
GRAPHICS
TECHNOLOGY

WWW.DDGTNET.NET



TOLERANCES UNLESS SPECIFIED
MILLIMETERS:
WHOLE NUMBERS = ±.5
X = ±.25
XX = ±.12
FRACTIONAL ±1/64"
ANGLES ±1 DEGREE
SURFACES 32√

CLASS: DDGT 120

ASSIGNMENT #:

INVENTOR DRAWING NAME:

CASTER

FIG #: 9-51

MANAGER: G. STROMMEN

DRAFTER: J. GALLAGHER

DATE: 11/24/2025

SCALE: AS NOTED

PAGE #: 3 OF 4

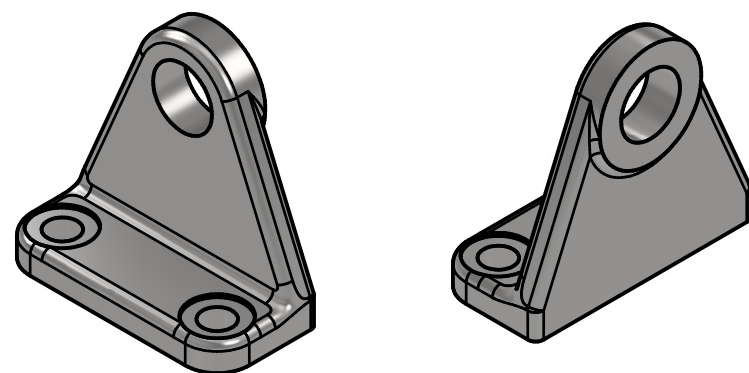
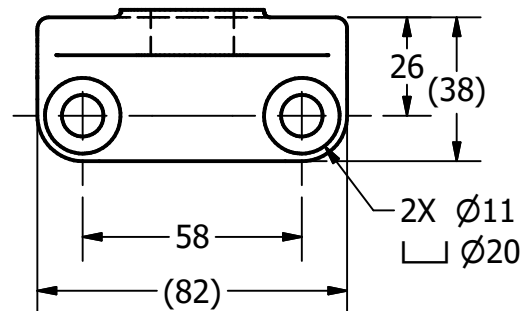
PARTS LIST

ITEM	QTY	PART NUMBER
3	2	AXLE SUPPORT
4	1	AXLE
5	2	BUSHING



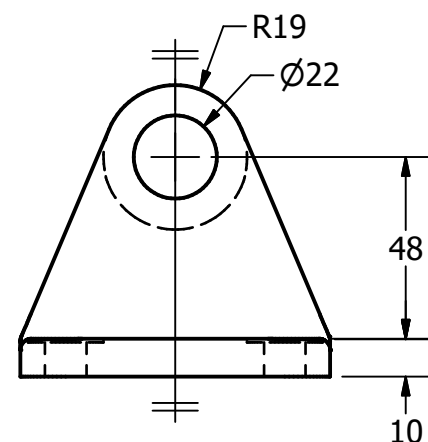
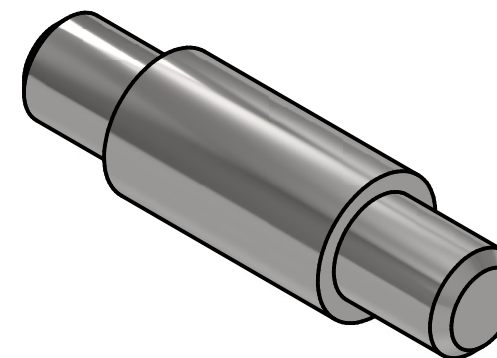
DIGITAL DESIGN
GRAPHICS
TECHNOLOGY

WWW.DDGTNET.NET

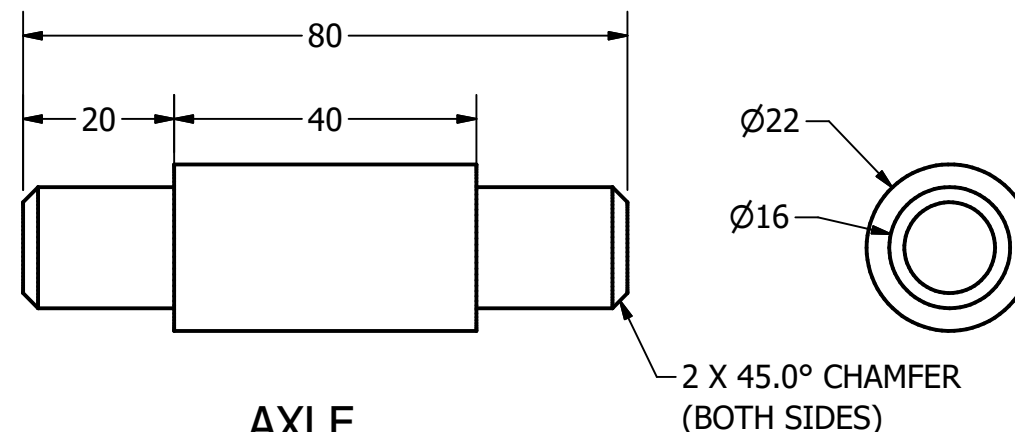
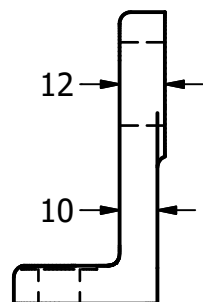


LEGEND:

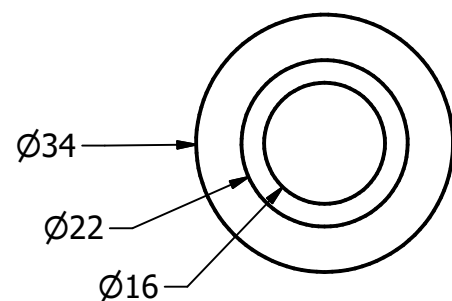
- Ø DIAMETER
- R RADIUS
- ° DEGREES
- ┌ SPOTFACE/
COUNTERBORE



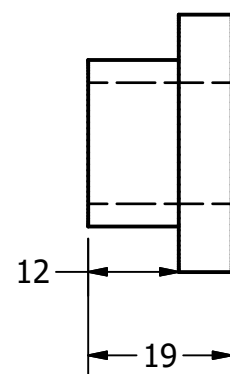
AXLE SUPPORT
SCALE 1 / 2



AXLE
SCALE 1 : 1



BUSHING
SCALE 1 : 1



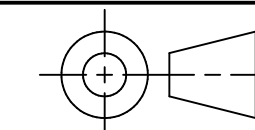
METRIC

GENERAL NOTES:

FASTEN ASSEMBLY TO A 6mm STEEL PLATE BY FOUR M 10 X 40mm LONG HEX HEAD BOLTS, NUTS, AND LOCK WASHERS.(NOT SHOWN)

SHOW THE STEEL PLATE IN PHANTOM LINES.

ROUNDS AND FILLETS R 3 UNLESS OTHERWISE STATED



TOLERANCES UNLESS SPECIFIED
MILLIMETERS:
WHOLE NUMBERS = ±.5
X = ±.25
XX = ±.12
FRACTIONAL ±1/64"
ANGLES ±1 DEGREE
SURFACES ³²✓

CLASS: DDGT 120

ASSIGNMENT #:

INVENTOR DRAWING NAME:

CASTER

FIG #: 9-51

MANAGER: G. STROMMEN

DRAFTER: J. GALLAGHER

DATE: 11/24/2025

SCALE: AS NOTED

PAGE #: 4 OF 4