



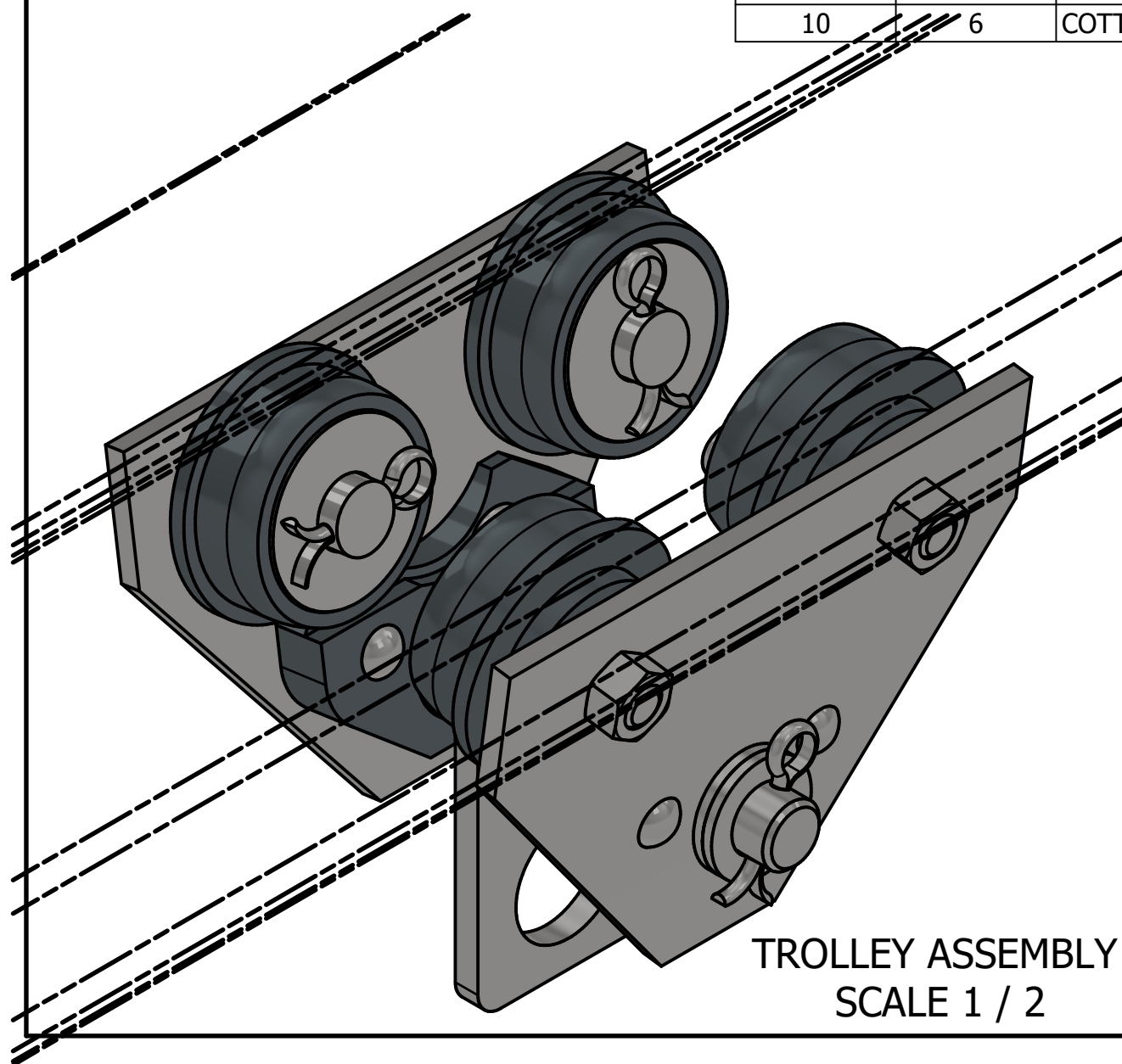
DIGITAL DESIGN  
GRAPHICS  
TECHNOLOGY

WWW.DDGTNET.NET

PARTS LIST

ITEM	QTY	PART NUMBER	MATERIAL	DESCRIPTION
1	2	SIDE PLATE SUB-ASSEMBLY		
1.1	1	SIDE PLATE	MILD STEEL	
1.2	1	GUIDE	CAST IRON	
1.3	2	RIVET+	STANDARD	BUTTON HEAD, Ø10 X 60 LONG
2	1	AXLE	COLD ROLLED STEEL	
3	1	HOOK	MILD STEEL	10 THICK
4	44	ROLLER BEARING	COLD ROLLED STEEL	Ø10 X 38 LONG
5	4	WHEEL	CAST IRON	
6	4	WHEEL AXLE	COLD ROLLED STEEL	
7	12	ADJUSTING WASHER	STANDARD	Ø26ID X Ø44OD X 4 THICK
8	4	WASHER	STANDARD	Ø26ID X Ø65OD X 3 THICK
9	4	LOCKNUT	STANDARD	M16 x 2 (PREVAILING TORQUE INSERT-TYPE)
10	6	COTTER PIN	STANDARD	Ø6 X 40 LONG

METRIC



TROLLEY ASSEMBLY  
SCALE 1 / 2

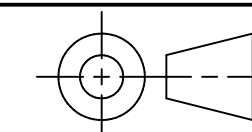
LEGEND:

- Ø DIAMETER
- R RADIUS
- ° DEGREES

GENERAL NOTES:

TROLLEY TO BE MOUNTED ON AN S200 X 34 BEAM

ALL CHAMFERS ARE 2 X 2 UNLESS OTHERWISE NOTED



TOLERANCES UNLESS SPECIFIED  
MILLIMETERS:  
WHOLE NUMBERS = ±.5  
X = ±.25  
XX = ±.12  
FRACTIONAL ±1/64"  
ANGLES ±1 DEGREE  
SURFACES <sup>32</sup>✓

CLASS: DDGT 120

ASSIGNMENT #: 70

INVENTOR DRAWING NAME:  
TROLLEY

FIG #: 14-83

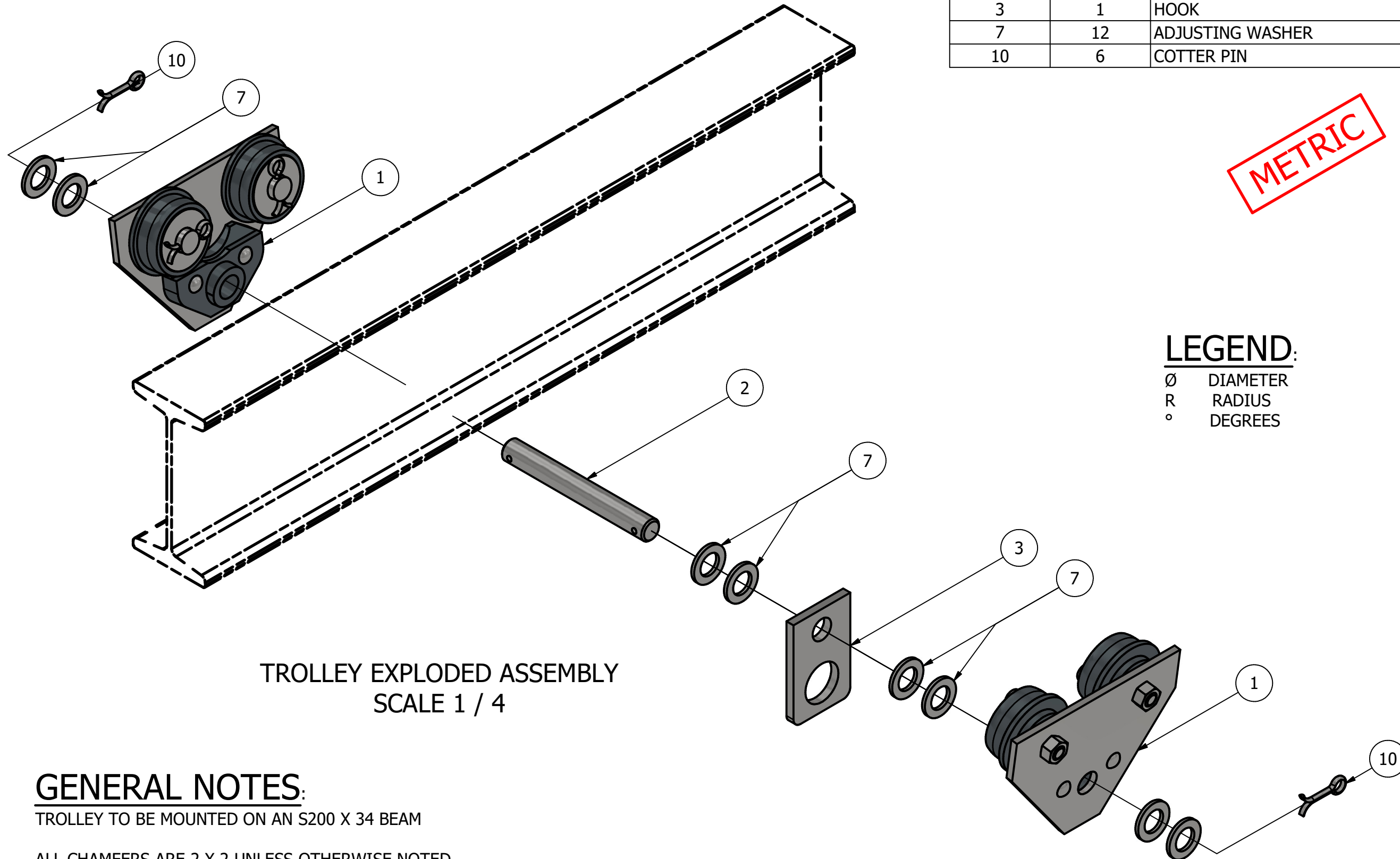
MANAGER: G. STROMMEN

DRAFTER: J. GALLAGHER

DATE: 12/10/2025

SCALE: AS NOTED

PAGE #: 1 OF 6



PARTS LIST		
ITEM	QTY	PART NUMBER
1	2	SIDE PLATE SUB-ASSEMBLY
2	1	AXLE
3	1	HOOK
7	12	ADJUSTING WASHER
10	6	COTTER PIN

METRIC

**LEGEND:**

- ∅ DIAMETER
- R RADIUS
- ° DEGREES

TROLLEY EXPLODED ASSEMBLY  
SCALE 1 / 4

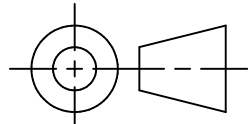
**GENERAL NOTES:**

TROLLEY TO BE MOUNTED ON AN S200 X 34 BEAM  
ALL CHAMFERS ARE 2 X 2 UNLESS OTHERWISE NOTED



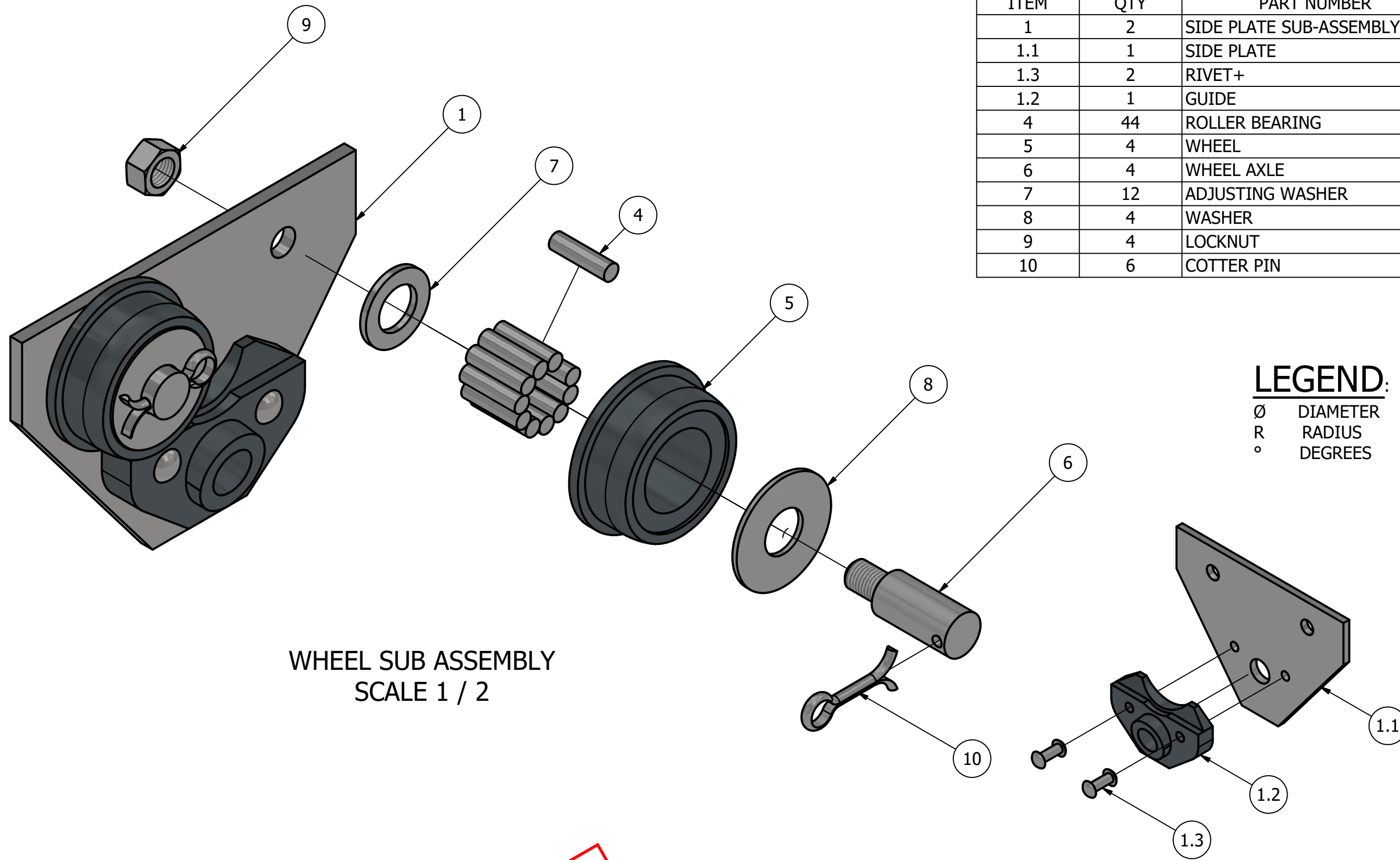
DIGITAL DESIGN  
GRAPHICS  
TECHNOLOGY

WWW.DDGTNET.NET



TOLERANCES UNLESS SPECIFIED  
MILLIMETERS:  
WHOLE NUMBERS = ±.5  
X = ±.25  
XX = ±.12  
FRACTIONAL ±1/64"  
ANGLES ±1 DEGREE  
SURFACES <sup>32</sup>✓

CLASS:	DDGT 120
ASSIGNMENT #:	70
INVENTOR DRAWING NAME:	TROLLEY
FIG #:	14-83
MANAGER:	G. STROMMEN
DRAFTER:	J. GALLAGHER
DATE:	12/10/2025
SCALE:	AS NOTED
PAGE #:	2 OF 6



WHEEL SUB ASSEMBLY  
SCALE 1 / 2

SIDE PLATE SUB-ASSEMBLY  
SCALE 1 / 4

**GENERAL NOTES:**

TROLLEY TO BE MOUNTED ON AN S200 X 34 BEAM

ALL CHAMFERS ARE 2 X 2 UNLESS OTHERWISE NOTED

**METRIC**

**PARTS LIST**

ITEM	QTY	PART NUMBER
1	2	SIDE PLATE SUB-ASSEMBLY
1.1	1	SIDE PLATE
1.3	2	RIVET+
1.2	1	GUIDE
4	44	ROLLER BEARING
5	4	WHEEL
6	4	WHEEL AXLE
7	12	ADJUSTING WASHER
8	4	WASHER
9	4	LOCKNUT
10	6	COTTER PIN

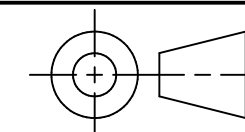
**LEGEND:**

∅ DIAMETER  
R RADIUS  
° DEGREES



DIGITAL DESIGN  
GRAPHICS  
TECHNOLOGY

WWW.DDGTNET.NET



TOLERANCES UNLESS SPECIFIED  
MILLIMETERS:  
WHOLE NUMBERS = ±.5  
X = ±.25  
XX = ±.12  
FRACTIONAL ±1/64"  
ANGLES ±1 DEGREE  
SURFACES <sup>32</sup>✓

CLASS: DDGT 120

ASSIGNMENT #: 70

INVENTOR DRAWING NAME:  
TROLLEY

FIG #: 14-83

MANAGER: G. STROMMEN

DRAFTER: J. GALLAGHER

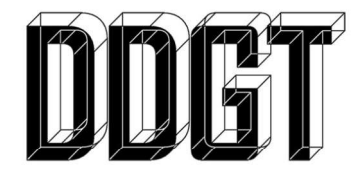
DATE: 12/10/2025

SCALE: AS NOTED

PAGE #: 3 OF 6

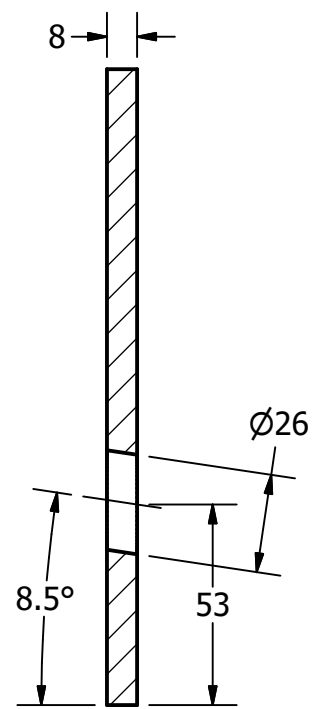
**METRIC**

PARTS LIST		
ITEM	QTY	PART NUMBER
1.1	2	SIDE PLATE

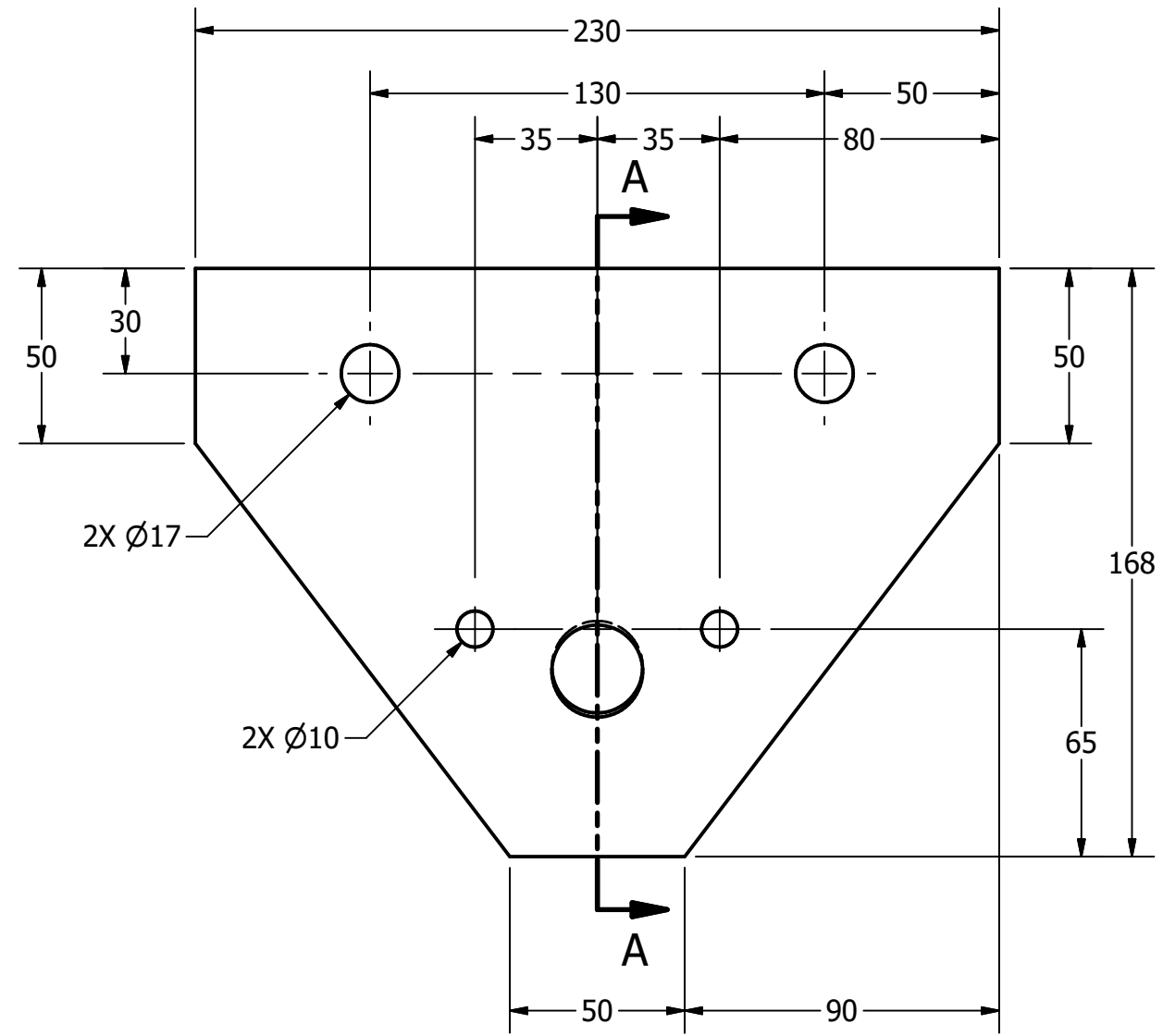


DIGITAL DESIGN  
GRAPHICS  
TECHNOLOGY

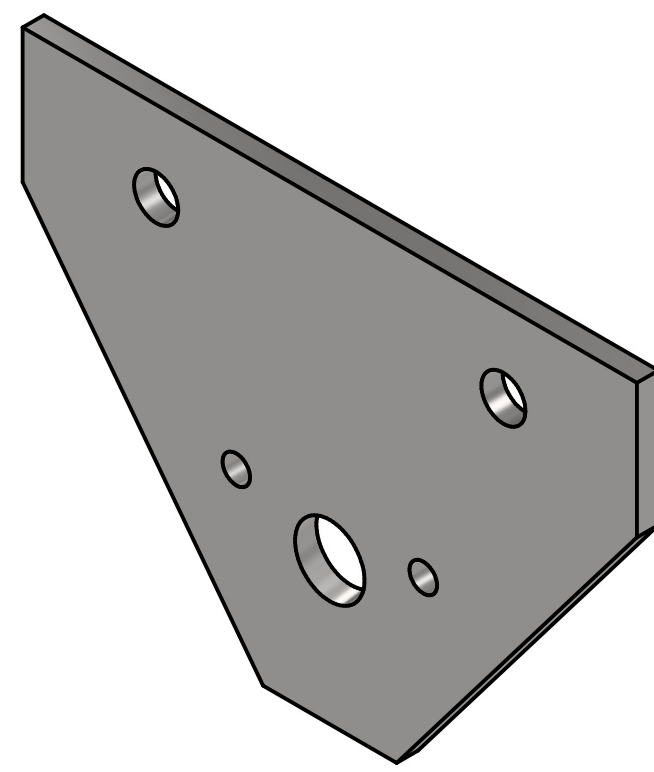
WWW.DDGTNET.NET



SECTION A-A  
SCALE 1 / 2



SIDE PLATE  
SCALE 1 / 2



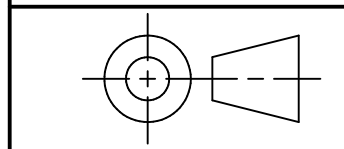
**LEGEND:**

- Ø DIAMETER
- R RADIUS
- ° DEGREES

**GENERAL NOTES:**

TROLLEY TO BE MOUNTED ON AN S200 X 34 BEAM

ALL CHAMFERS ARE 2 X 2 UNLESS OTHERWISE NOTED



TOLERANCES UNLESS SPECIFIED  
MILLIMETERS:  
WHOLE NUMBERS = ±.5  
X = ±.25  
XX = ±.12  
FRACTIONAL ±1/64"  
ANGLES ±1 DEGREE  
SURFACES <sup>32</sup>✓

CLASS: DDGT 120

ASSIGNMENT #: 70

INVENTOR DRAWING NAME:  
TROLLEY

FIG #: 14-83

MANAGER: G. STROMMEN

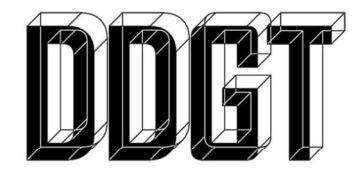
DRAFTER: J. GALLAGHER

DATE: 12/10/2025

SCALE: AS NOTED

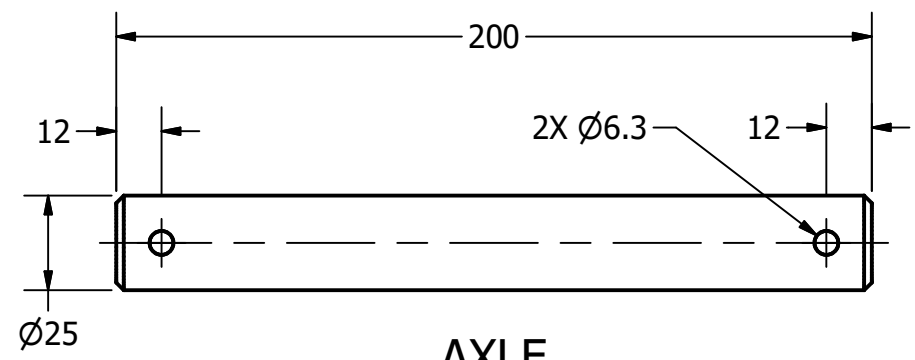
PAGE #: 4 OF 6

PARTS LIST		
ITEM	QTY	PART NUMBER
1.2	2	GUIDE

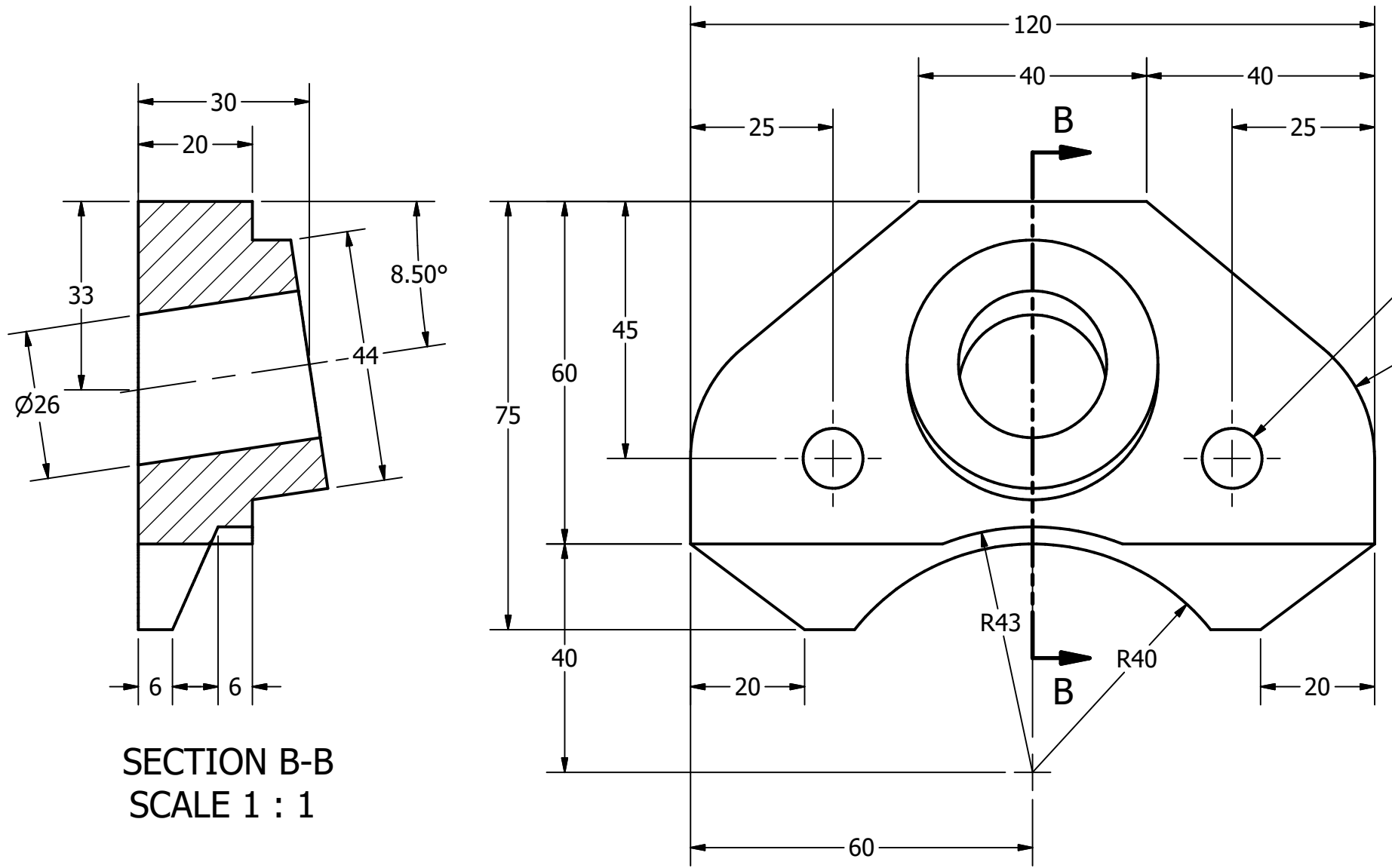
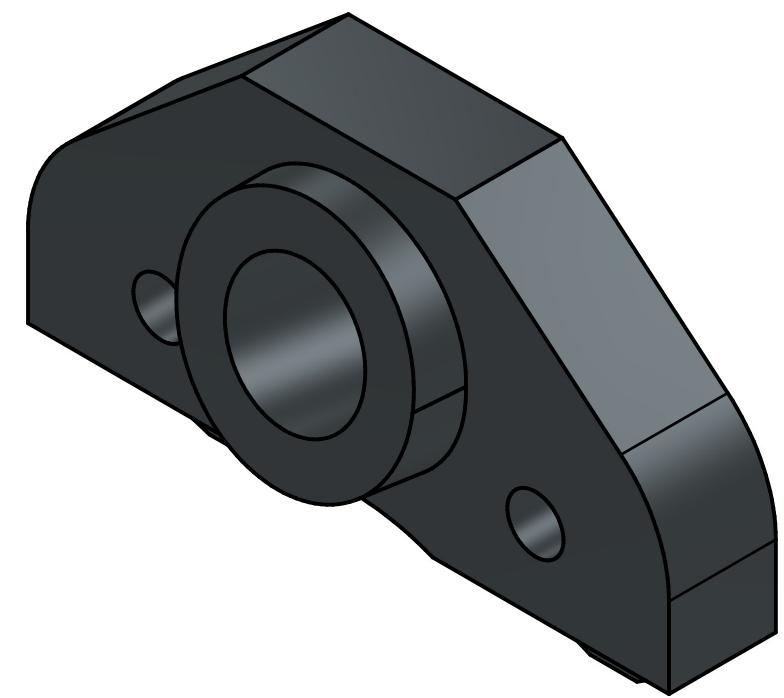
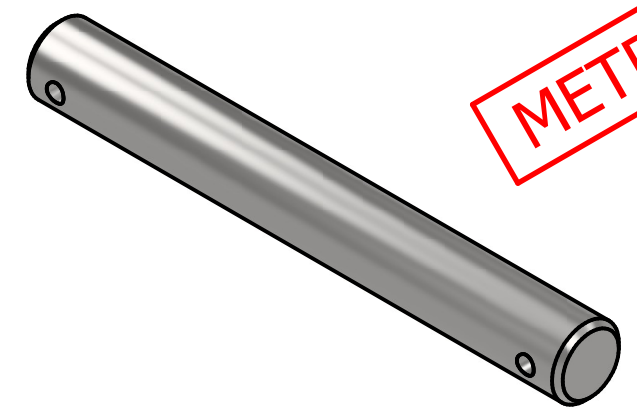


DIGITAL DESIGN  
GRAPHICS  
TECHNOLOGY

WWW.DDGTNET.NET



AXLE  
SCALE 1 / 2

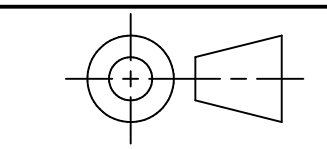


SECTION B-B  
SCALE 1 : 1

GUIDE  
SCALE 1 : 1

**LEGEND:**  
 Ø DIAMETER  
 R RADIUS  
 ° DEGREES

**GENERAL NOTES:**  
 TROLLEY TO BE MOUNTED ON AN S200 X 34 BEAM  
 ALL CHAMFERS ARE 2 X 2 UNLESS OTHERWISE NOTED



TOLERANCES UNLESS SPECIFIED  
 MILLIMETERS:  
 WHOLE NUMBERS = ±.5  
 X = ±.25  
 XX = ±.12  
 FRACTIONAL ±1/64"  
 ANGLES ±1 DEGREE  
 SURFACES <sup>32</sup>✓

CLASS: DDGT 120

ASSIGNMENT #: 70

INVENTOR DRAWING NAME:  
TROLLEY

FIG #: 14-83

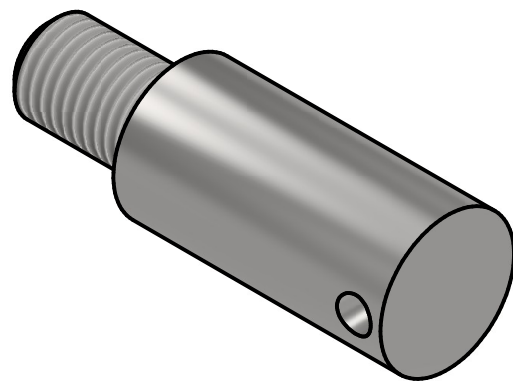
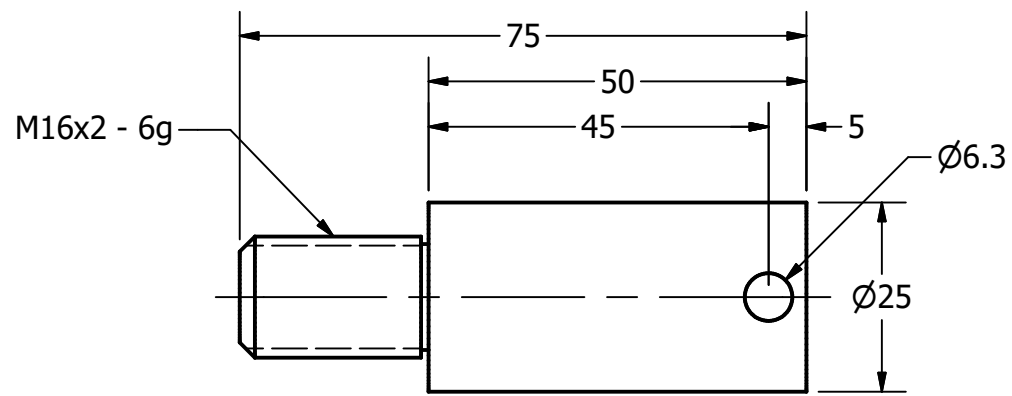
MANAGER: G. STROMMEN

DRAFTER: J. GALLAGHER

DATE: 12/10/2025

SCALE: AS NOTED

PAGE #: 5 OF 6



PARTS LIST		
ITEM	QTY	PART NUMBER
3	1	HOOK
5	4	WHEEL
6	4	WHEEL AXLE

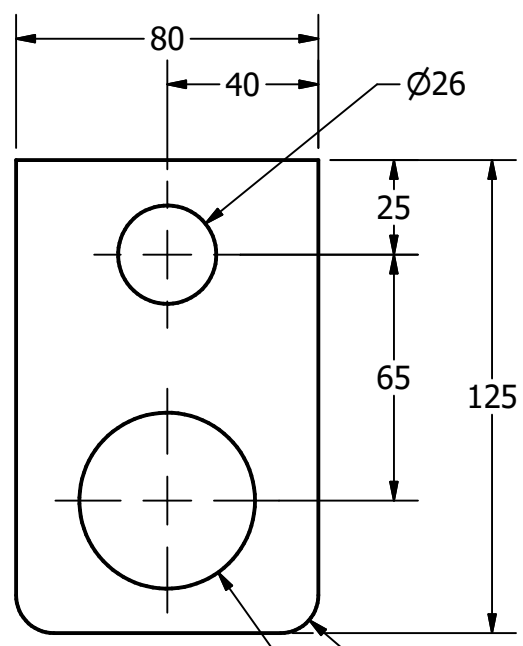
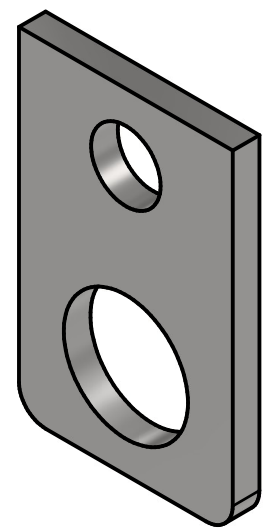
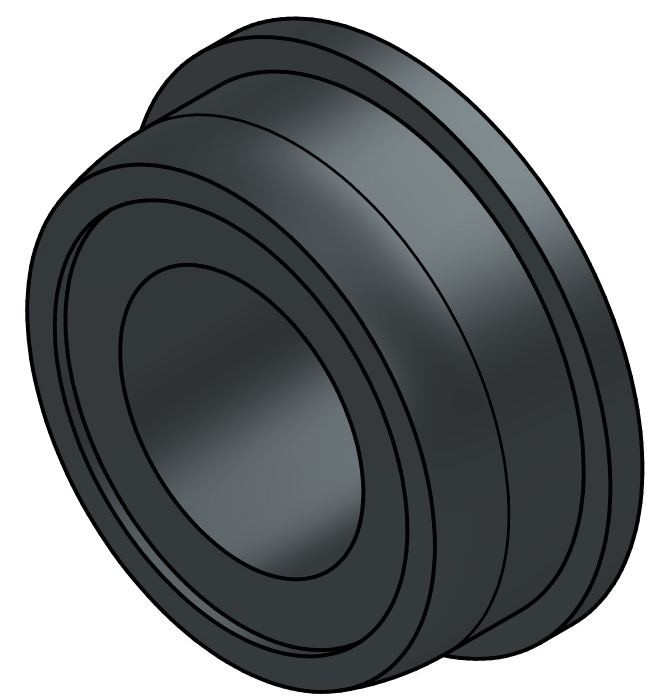


DIGITAL DESIGN  
GRAPHICS  
TECHNOLOGY

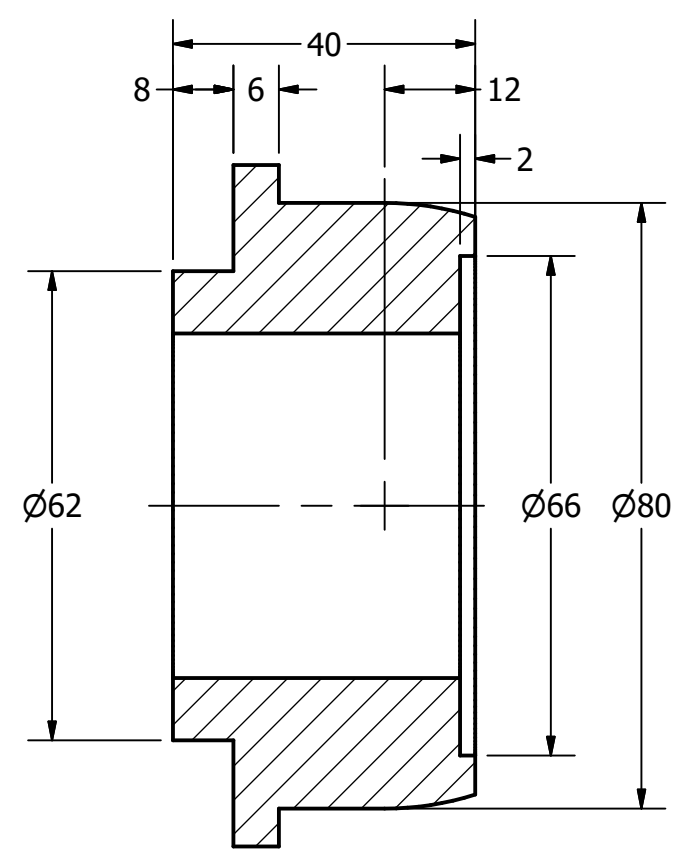
WWW.DDGTNET.NET

WHEEL AXLE  
SCALE 1 : 1

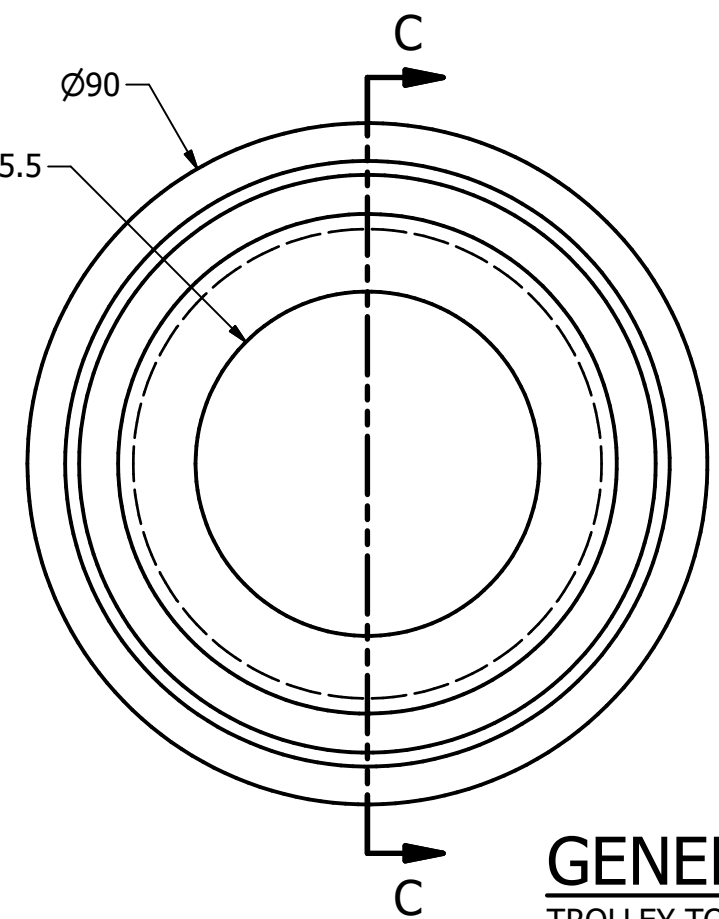
METRIC



HOOK  
SCALE 1 / 2



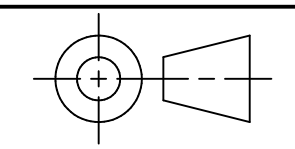
SECTION C-C  
SCALE 1 : 1



WHEEL  
SCALE 1 : 1

**LEGEND:**  
 Ø DIAMETER  
 R RADIUS  
 ° DEGREES

**GENERAL NOTES:**  
 TROLLEY TO BE MOUNTED ON AN S200 X 34 BEAM  
 ALL CHAMFERS ARE 2 X 2 UNLESS OTHERWISE NOTED



TOLERANCES UNLESS SPECIFIED  
 MILLIMETERS:  
 WHOLE NUMBERS = ±.5  
 X = ±.25  
 XX = ±.12  
 FRACTIONAL ±1/64"  
 ANGLES ±1 DEGREE  
 SURFACES <sup>32</sup>✓

CLASS: DDGT 120

ASSIGNMENT #: 70

INVENTOR DRAWING NAME:  
TROLLEY

FIG #: 14-83

MANAGER: G. STROMMEN

DRAFTER: J. GALLAGHER

DATE: 12/10/2025

SCALE: AS NOTED

PAGE #: 6 OF 6