



DIGITAL DESIGN
GRAPHICS
TECHNOLOGY

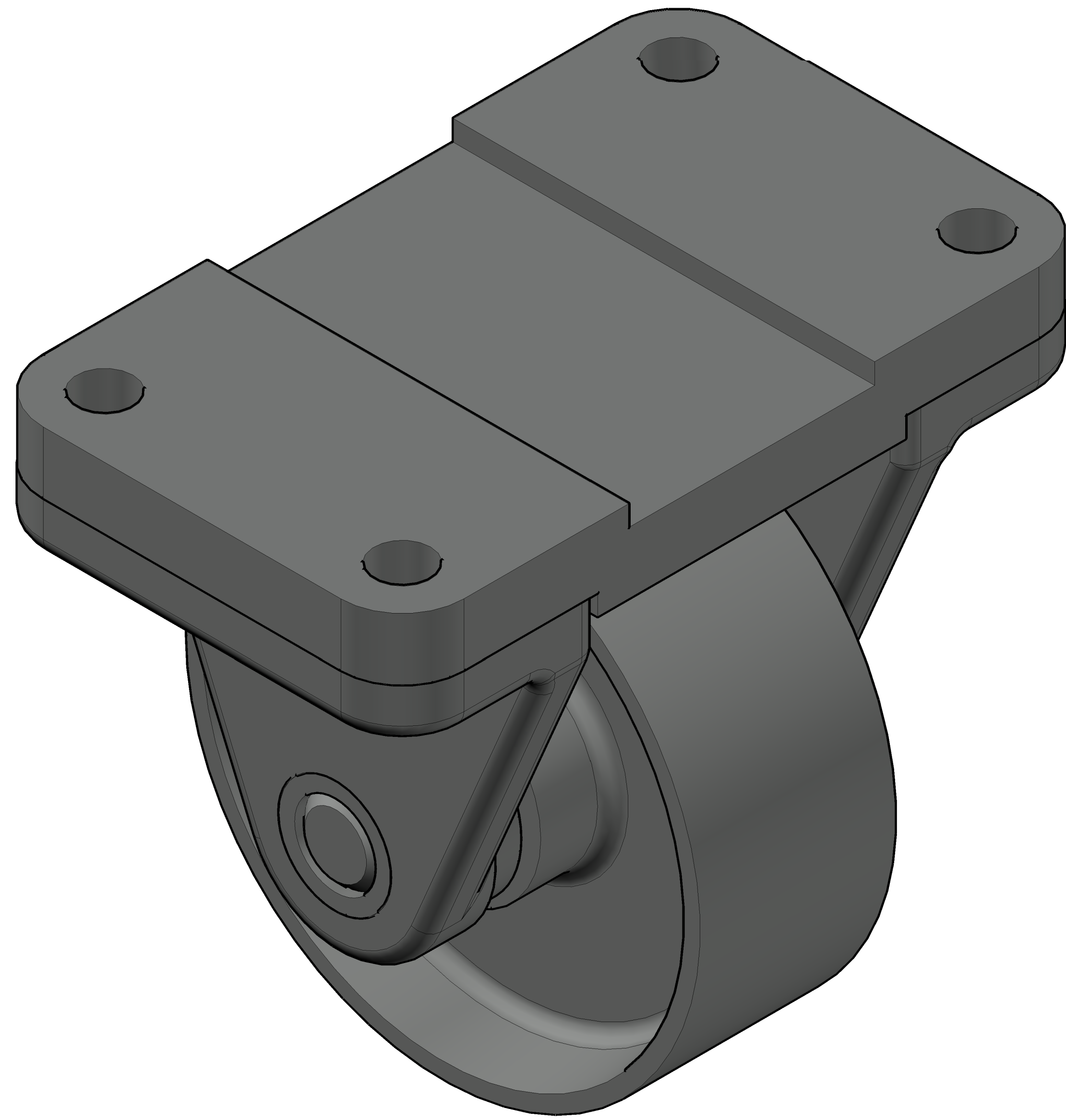
WWW.DDGT.NET

PARTS LIST

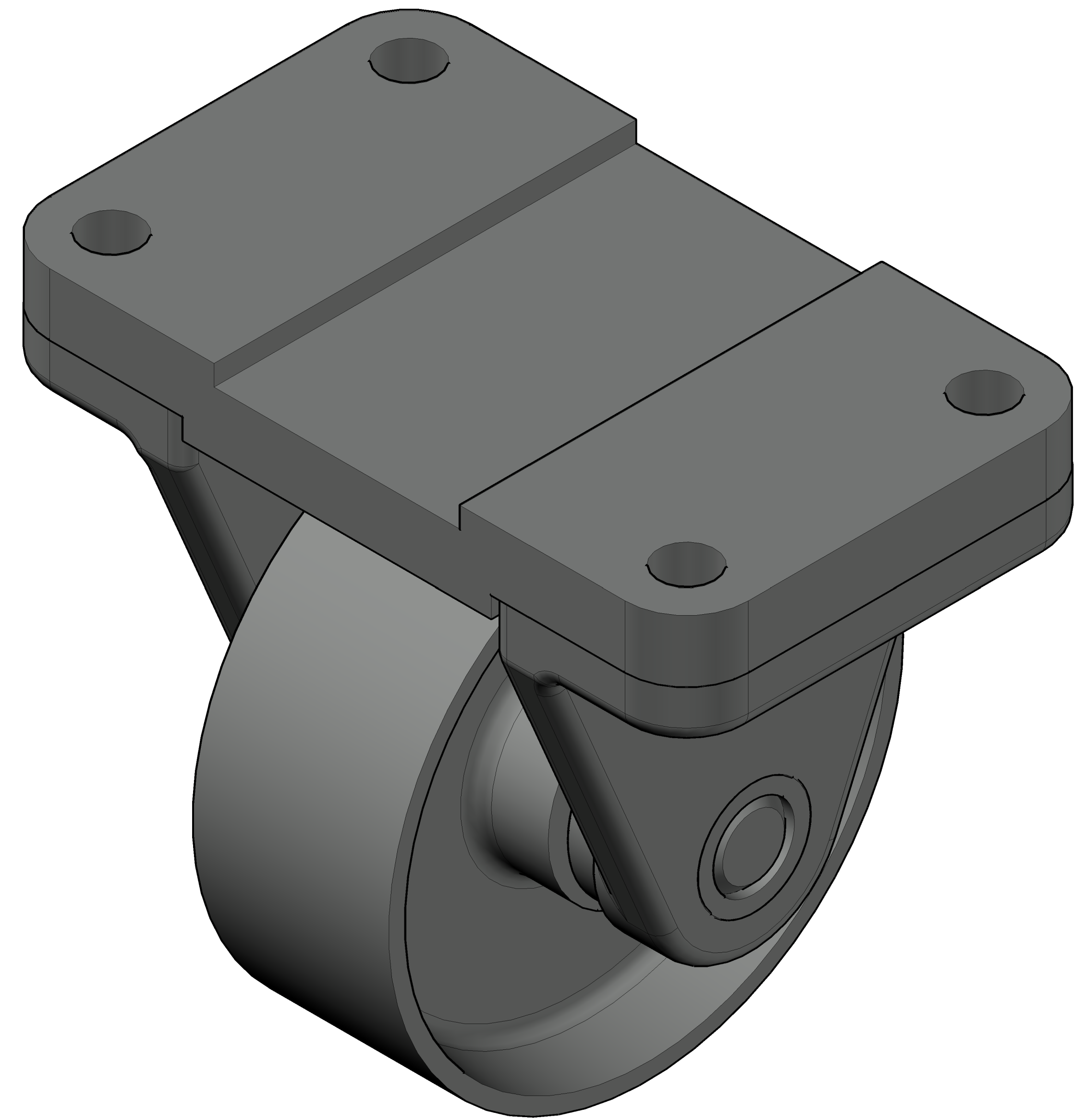
ITEM	QTY.	PART NAME	MATERIAL
1	1	TOP PLATE	MALLEABLE IRON
2	1	WHEEL	MALLEABLE IRON
3	2	AXLE SUPPORT	MALLEABLE IRON
4	1	AXLE	SAE 1020
5	2	BUSHING	BRONZE

GENERAL NOTES:
FASTEN ASSEMBLY TO A 6MM STEEL PLATE BY FOUR M10 X 40MM LONG HEX HEAD BOLTS, NUTS, AND LOCK WASHERS.

ROUNDS AND FILLETS ARE 3

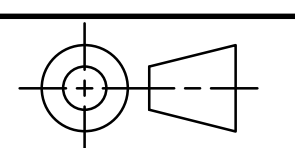


CASTER ASSEMBLY
SCALE 2:1



CASTER ASSEMBLY
ALTERNATE VIEW
SCALE 2:1

METRIC



TOLERANCES UNLESS SPECIFIED:
MILLIMETERS = ±.5
X = ±.25
XX = ±.125
FRACTIONAL ±1/64"
ANGLES ±1 DEGREE
SURFACES 3/2

CLASS: DDGT-120

ASSIGNMENT #: 63

AUTOCAD DRAWING NAME:
CASTER ASSEMBLY

FIG #: 9-51

MANAGER: G. STROMMEN

DRAFTER: L. MELBY

DATE: November 13, 2025

SCALE: AS NOTED

PAGE #: 1 OF 4

LEGEND

SYMBOL	DESCRIPTION
∅	DIAMETER
R	RADIUS
°	DEGREES
	COUNTERBORE / SPOTFACE

PARTS LIST		
ITEM	QTY.	PART NAME
1	1	TOP PLATE
2	1	WHEEL
3	2	AXLE SUPPORT
4	1	AXLE
5	2	BUSHING

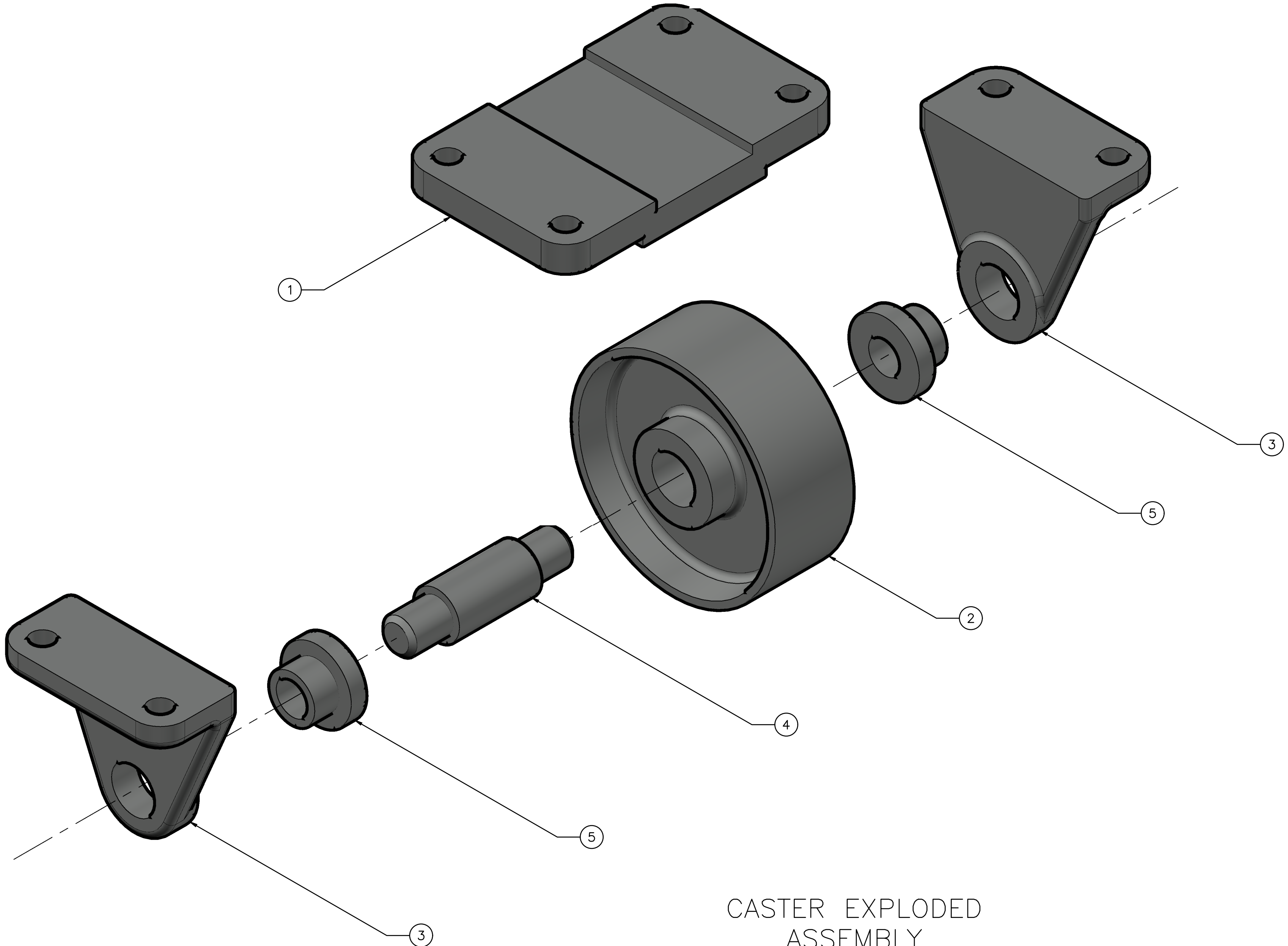
DDGT
DIGITAL DESIGN
GRAPHICS
TECHNOLOGY

WWW.DDGT.NET

GENERAL NOTES:
FASTEN ASSEMBLY TO A 6MM STEEL PLATE BY FOUR M10 X 40MM LONG HEX HEAD BOLTS, NUTS, AND LOCK WASHERS.

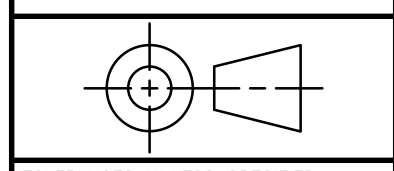
ROUNDS AND FILLETS ARE 3

FIT	BETWEEN PARTS
H8/f7	4 AND 5
H7/p6	3 AND 5
H8/f7	2 AND 4



METRIC

CASTER EXPLODED ASSEMBLY
SCALE 1:1



TOLERANCES UNLESS SPECIFIED:
MILLIMETERS = ±.5
X = ±.25
XX = ±.125
FRACTIONAL ±1/64"
ANGLES ±1 DEGREE
SURFACES 32/

CLASS: DDGT-120

ASSIGNMENT #: 63

AUTOCAD DRAWING NAME:
CASTER ASSEMBLY

FIG #: 9-51

MANAGER: G. STROMMEN

DRAFTER: L. MELBY

DATE: November 13, 2025

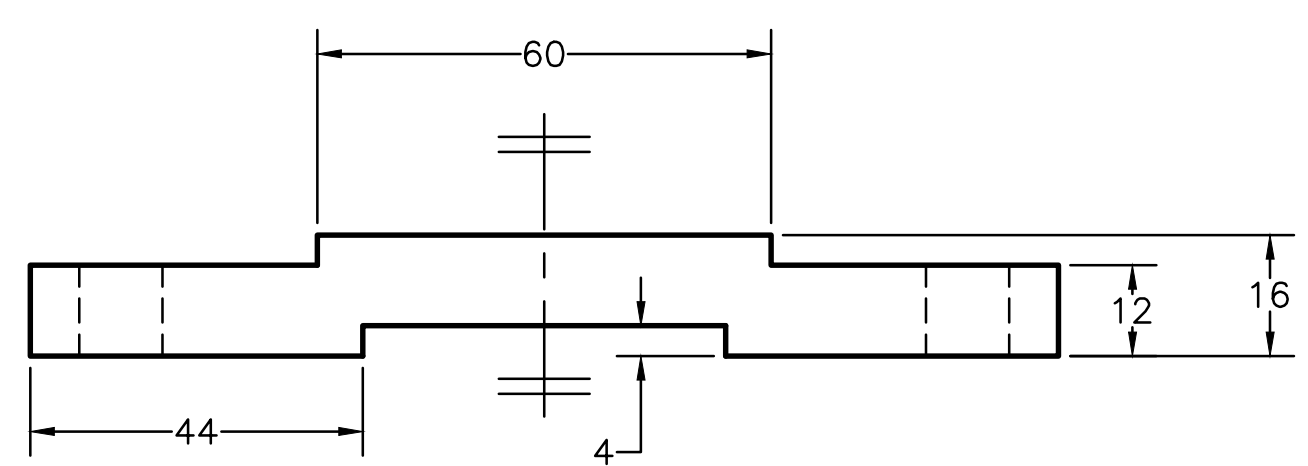
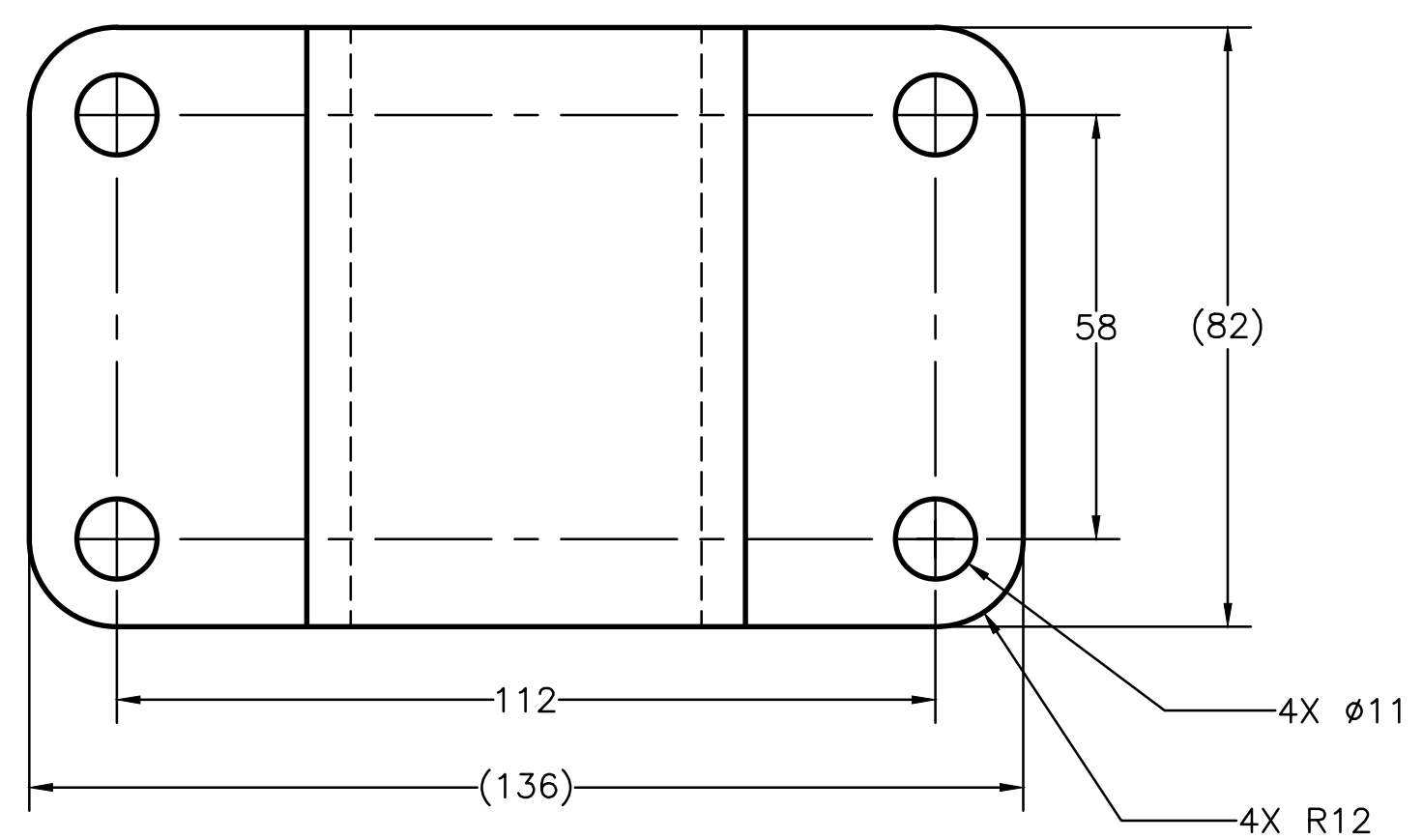
LEGEND	
SYMBOL	DESCRIPTION
∅	DIAMETER
R	RADIUS
°	DEGREES
	COUNTERBORE / SPOTFACE

SCALE: AS NOTED
PAGE #: 2 OF 4

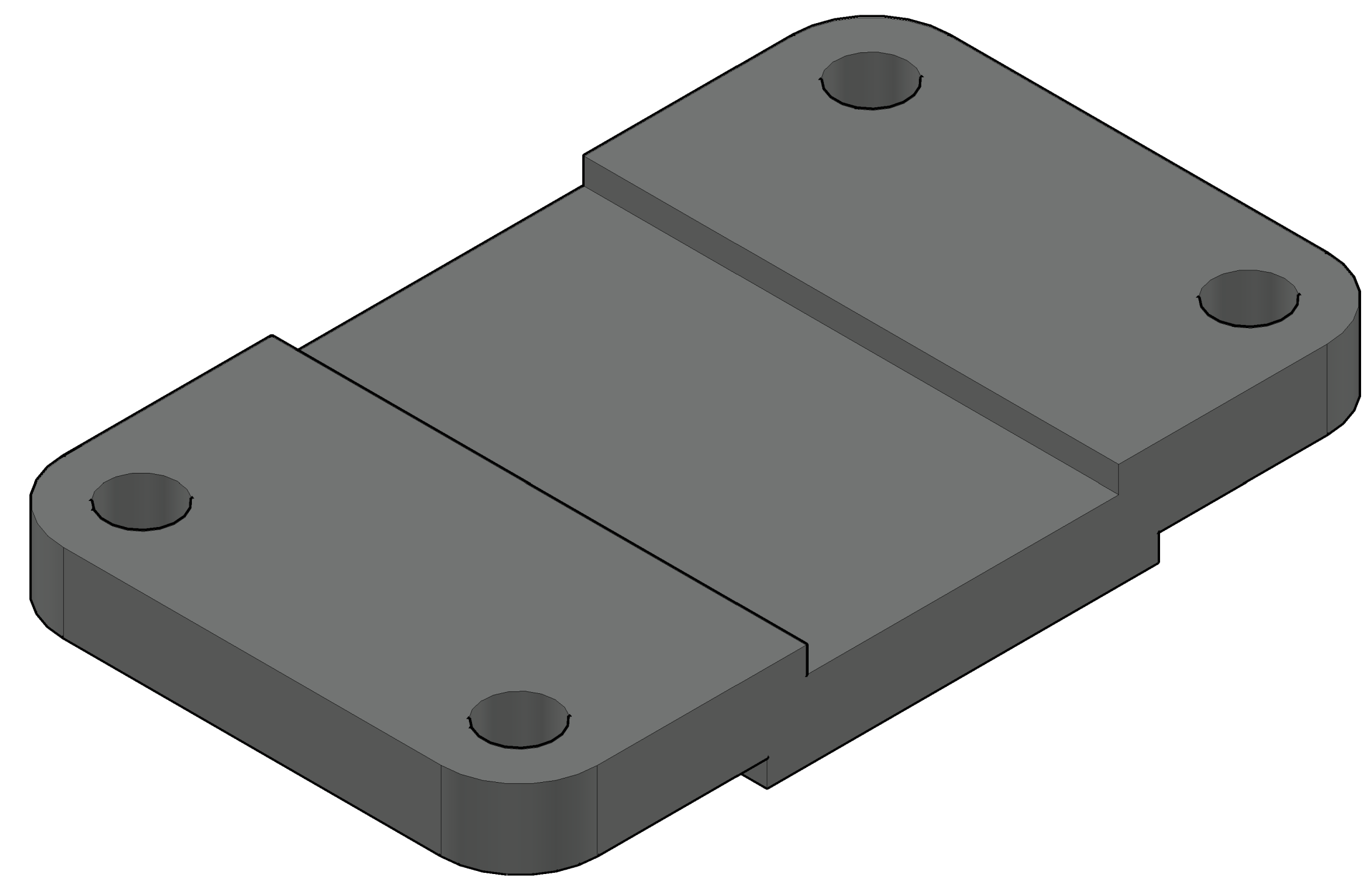
PARTS LIST		
ITEM	QTY.	PART NAME
1	1	TOP PLATE
2	1	WHEEL

DDGT
DIGITAL DESIGN
GRAPHICS
TECHNOLOGY
WWW.DDGT.NET

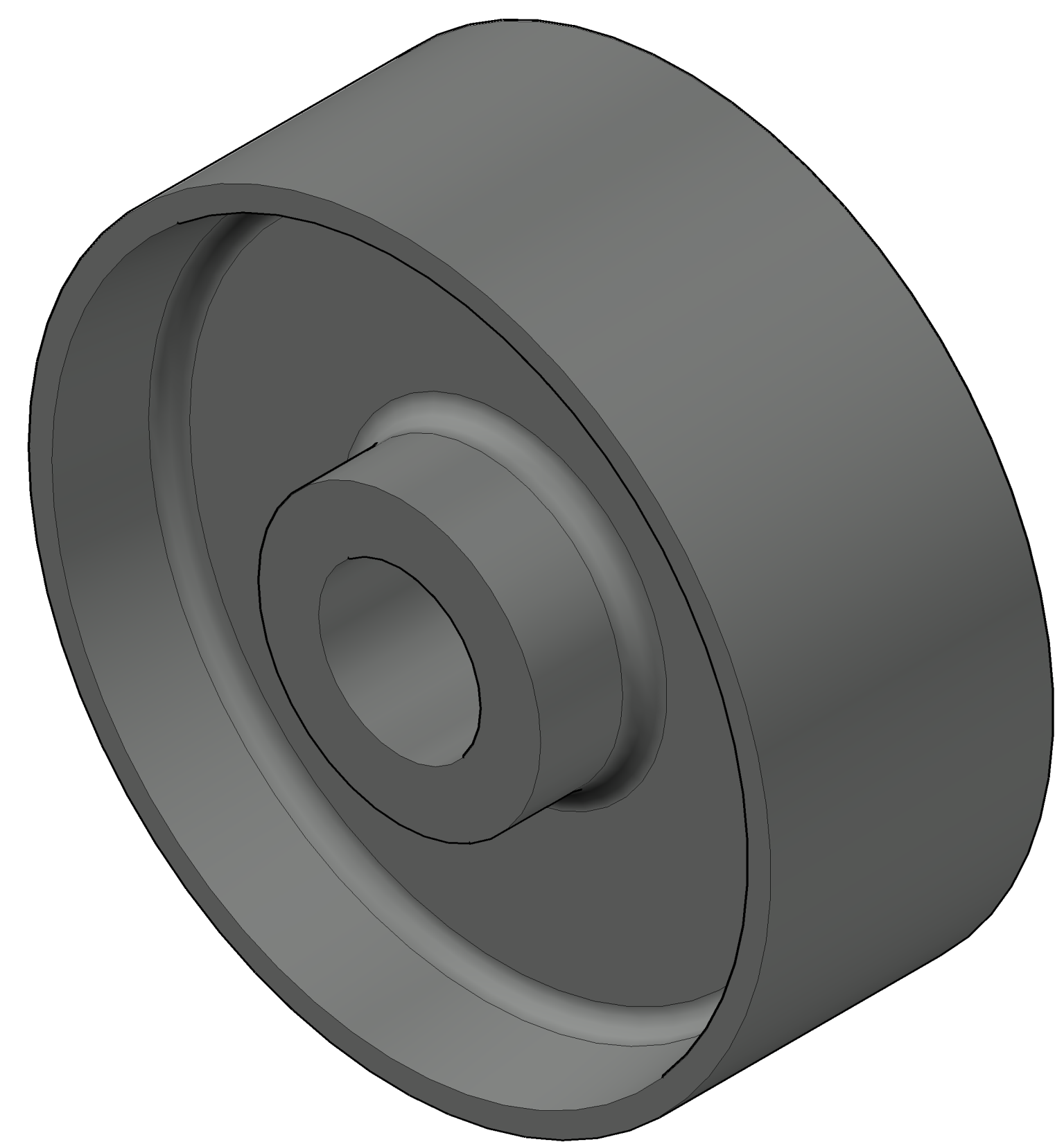
GENERAL NOTES:
FASTEN ASSEMBLY TO A 6MM STEEL PLATE BY FOUR M10 X 40MM LONG HEX HEAD BOLTS, NUTS, AND LOCK WASHERS.
ROUNDS AND FILLETS ARE 3



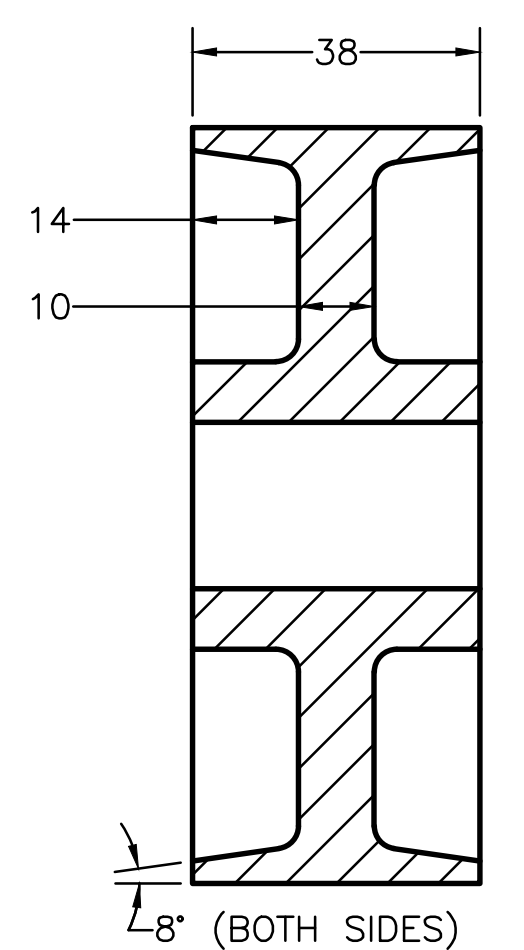
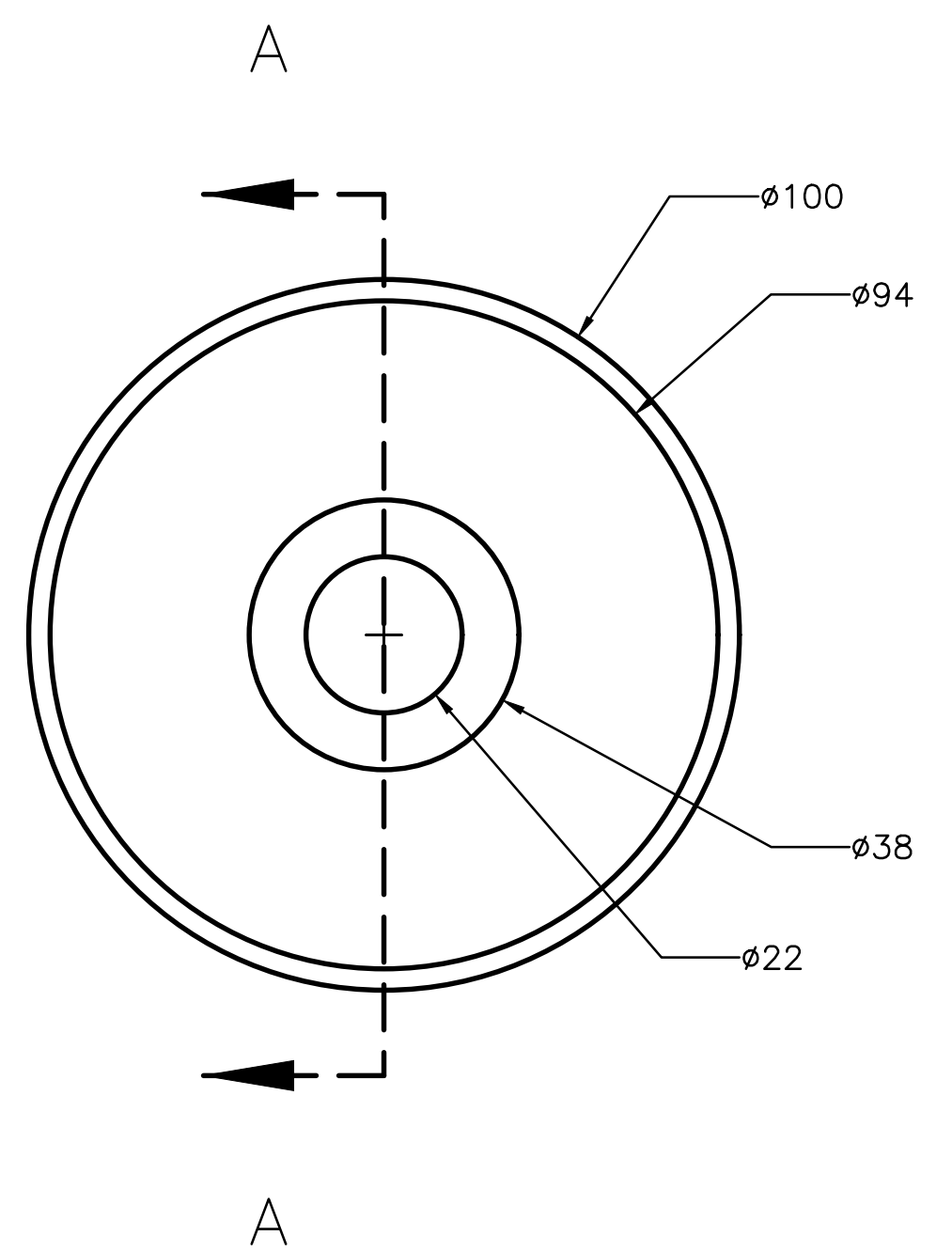
TOP PLATE
SCALE 1:1



TOP PLATE - 3D
SCALE 2:1



WHEEL - 3D
SCALE 2:1

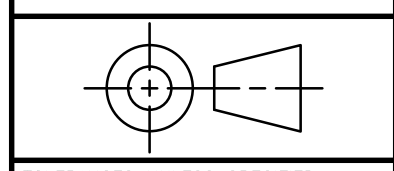


SECTION A-A

WHEEL
SCALE 1:1

METRIC

LEGEND	
SYMBOL	DESCRIPTION
∅	DIAMETER
R	RADIUS
°	DEGREES
	COUNTERBORE / SPOTFACE



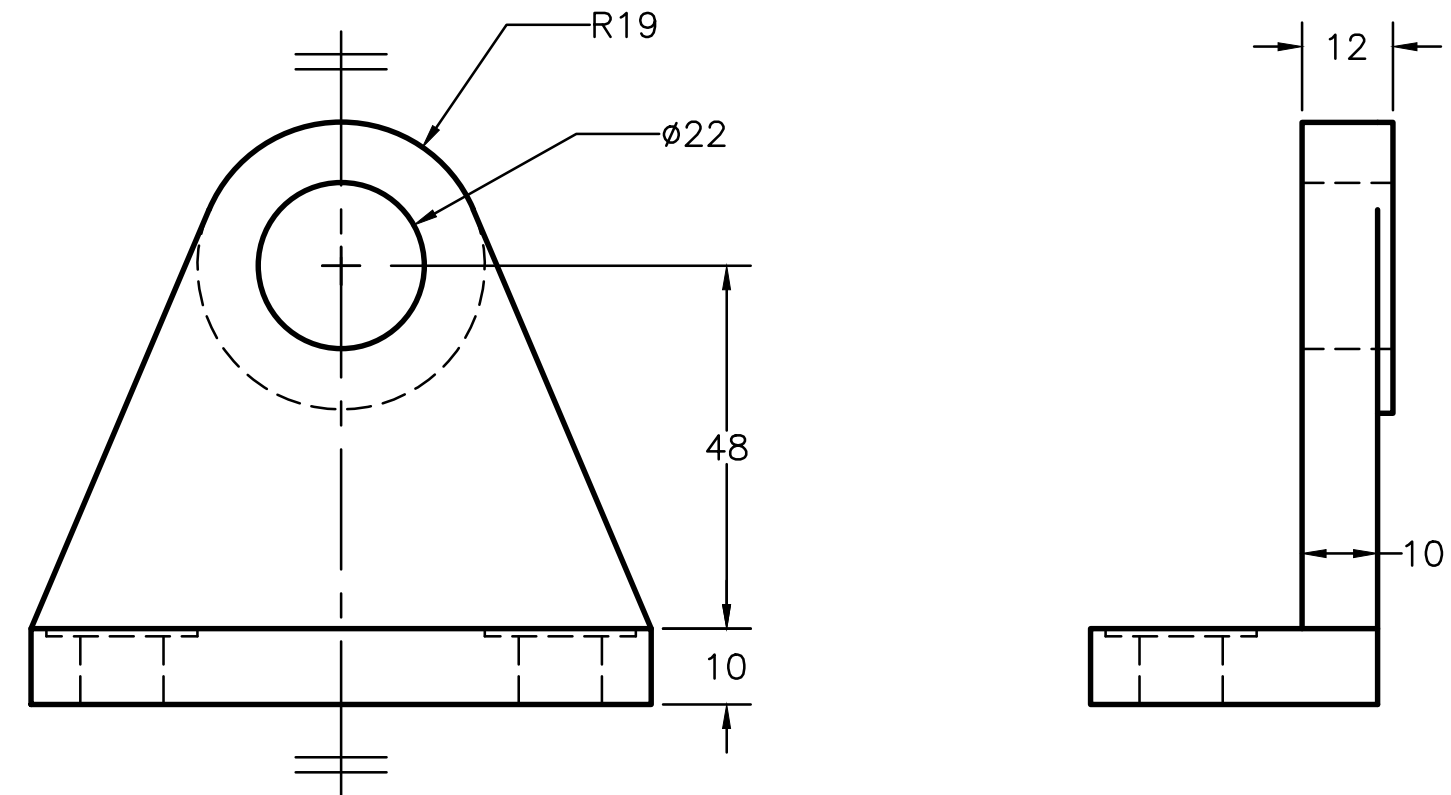
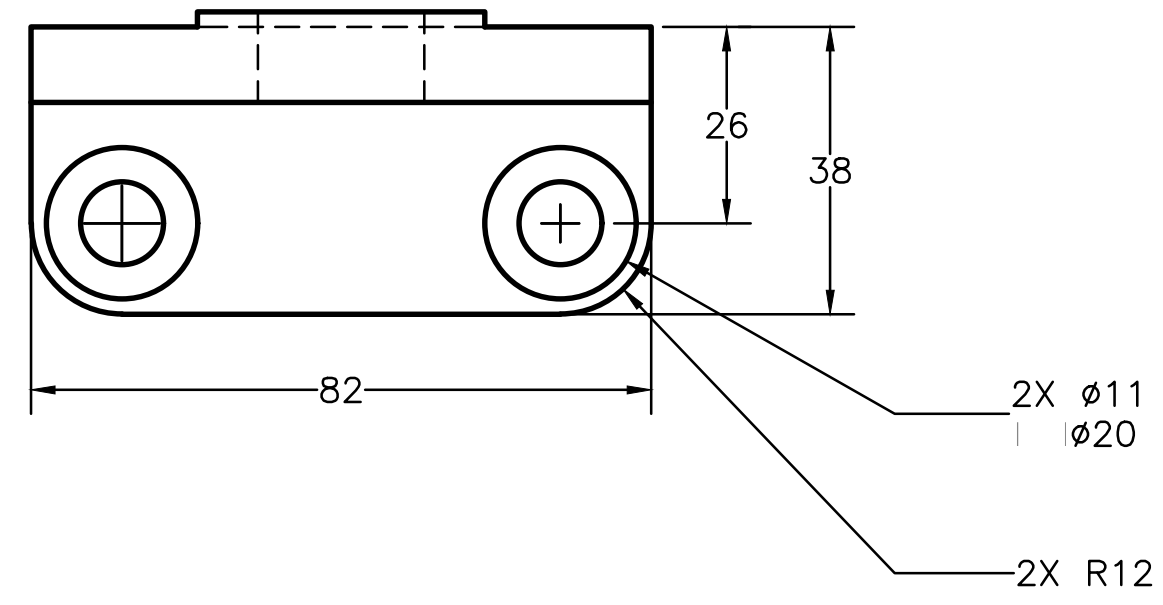
TOLERANCES UNLESS SPECIFIED:
MILLIMETERS = ±.5
X = ±.25
XX = ±.12
FRACTIONAL ±1/64"
ANGLES ±1 DEGREE
SURFACES 32/

CLASS: DDGT-120
ASSIGNMENT #: 63
AUTOCAD DRAWING NAME: CASTER ASSEMBLY
FIG #: 9-51
MANAGER: G. STROMMEN
DRAFTER: L. MELBY
DATE: November 13, 2025
SCALE: AS NOTED
PAGE #: 3 OF 4

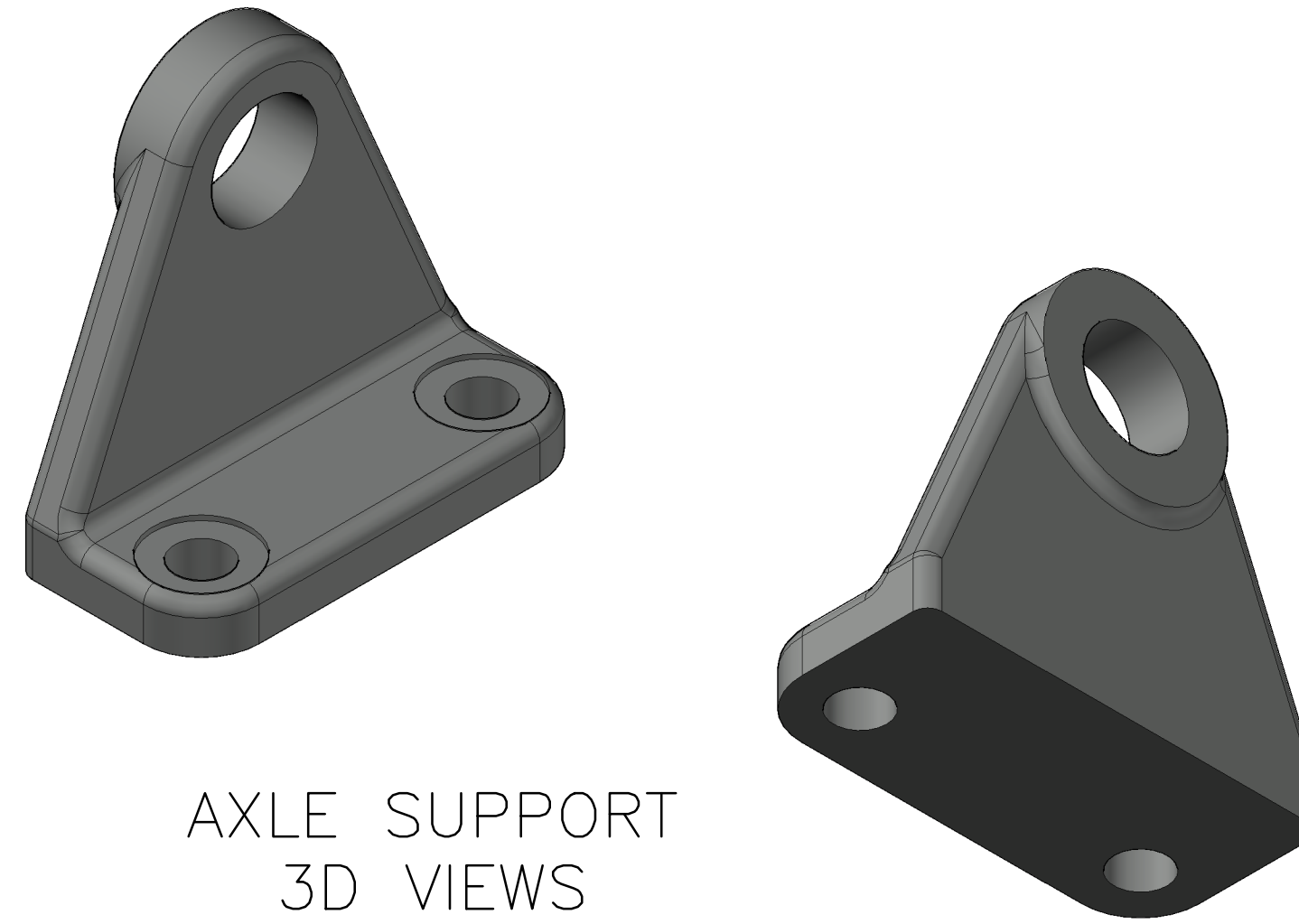
PARTS LIST		
ITEM	QTY.	PART NAME
3	2	AXLE SUPPORT
4	1	AXLE
5	2	BUSHING

GENERAL NOTES:
FASTEN ASSEMBLY TO A 6MM STEEL PLATE BY FOUR M10 X 40MM LONG HEX HEAD BOLTS, NUTS, AND LOCK WASHERS.

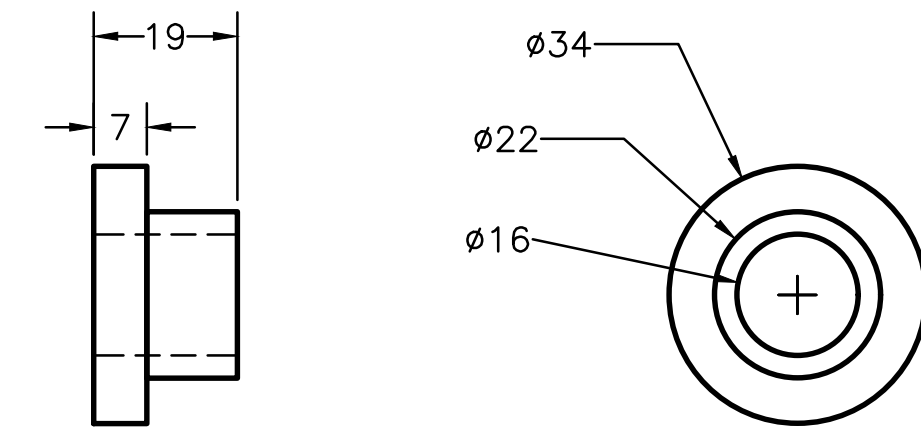
ROUNDS AND FILLETS ARE 3



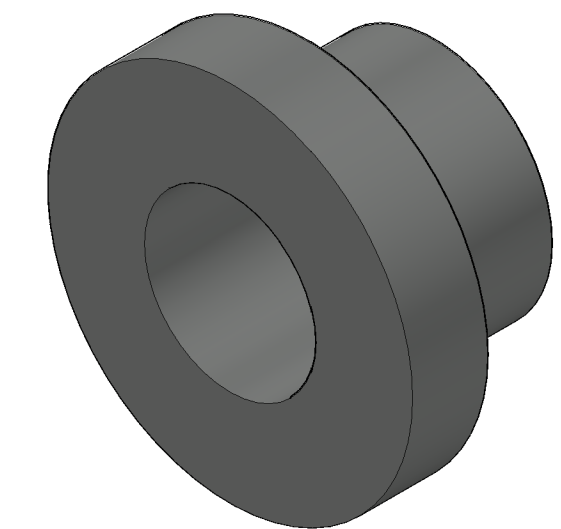
AXLE SUPPORT
SCALE 1:1



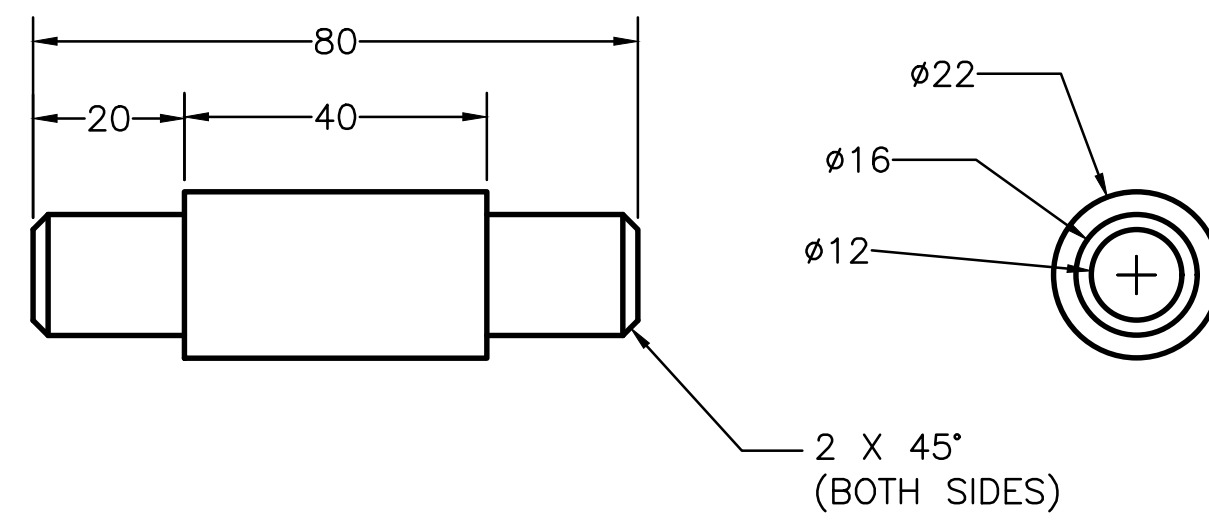
AXLE SUPPORT
3D VIEWS
SCALE 1:1



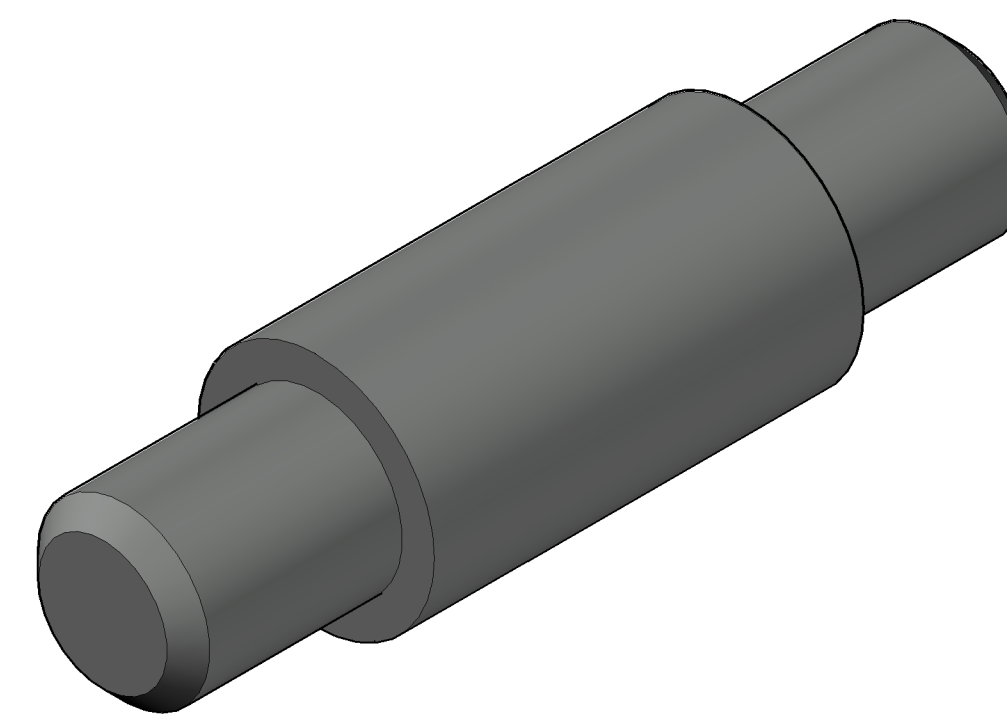
BUSHING
SCALE 1:1



BUSHING – 3D
SCALE 2:1

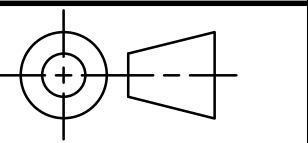


AXLE
SCALE 1:1



AXLE – 3D
SCALE 2:1

METRIC



TOLERANCES UNLESS SPECIFIED:
MILLIMETERS = ±.5
X = ±.25
XX = ±.12
FRACTIONAL ±1/64"
ANGLES ±1 DEGREE
SURFACES 32/

CLASS: DDGT-120

ASSIGNMENT #: 63

AUTOCAD DRAWING NAME:

CASTER ASSEMBLY

FIG #: 9-51

MANAGER: G. STROMMEN

DRAFTER: L. MELBY

DATE: November 13, 2025

SCALE: AS NOTED

PAGE #: 4 OF 4

LEGEND	
SYMBOL	DESCRIPTION
Ø	DIAMETER
R	RADIUS
°	DEGREES
	COUNTERBORE / SPOTFACE