



DIGITAL DESIGN
GRAPHICS
TECHNOLOGY

WWW.DDGT.NET

GENERAL NOTES:
ALL FILLETS R.06 UNLESS
OTHERWISE NOTED.

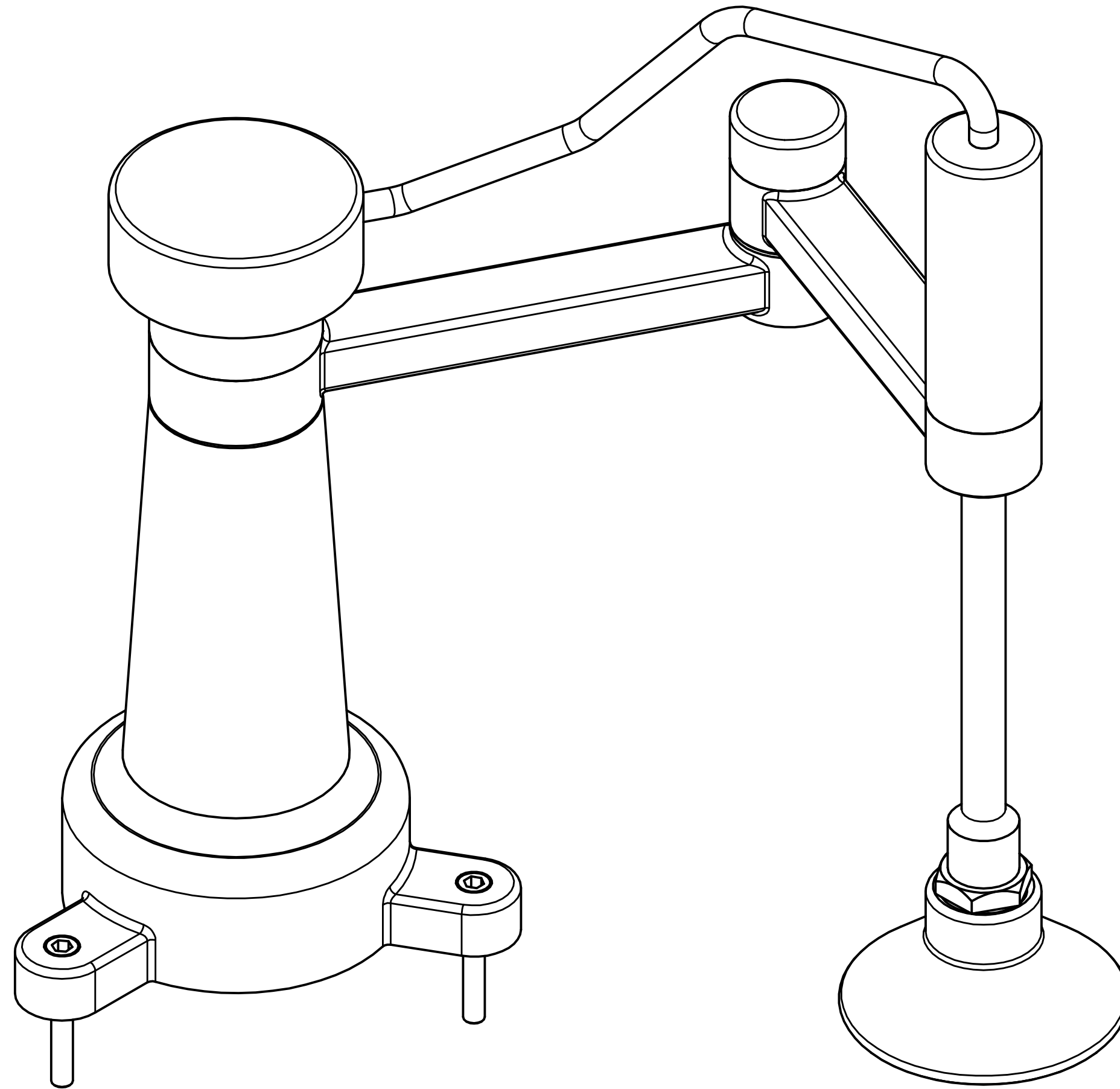
ALL CHAMFERS .02 X 45°
UNLESS OTHERWISE
NOTED.

PARTS LIST

ITEM	QTY	PART NUMBER	MATERIAL	DESCRIPTION
1	1	BASE E-01	ALUMINUM	
2	1	ARM E-01	ALUMINUM	
3	1	ARM E-02	ALUMINUM	
5	1	VACUUM CONNECTOR	STEEL	
6	1	VACUUM CUP	RUBBER	
7	1	BASE CAP	ALUMINUM	
8	1	ELBOW CAP	ALUMINUM	
9	1	VACUUM CAP	ALUMINUM	
10	3	CAP SCREW	STEEL	CHAM .015 END
11.1	1	SLIDING TUBE BOTTOM	Steel	
11.2	1	SLIDING TUBE TOP	Steel	
12	1	VACUUM TUBE	Generic	11" LONG, ID .125" OD .25"

LEGEND:

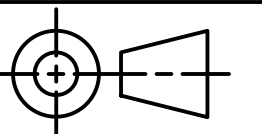
- ∅ DIAMETER
- R RADIUS
- ° DEGREES
- ┌┐ COUNTERBORE/
SPOTFACE
- ▽ DEPTH



ROBOTIC ARM
SCALE 1 : 1



Julian Lemus
Drafter
(707)217-6845
jlemus9@gmail.com
<https://ddgt.net/studentpages/jlemus/index.html>



TOLERANCES UNLESS SPECIFIED:
DECIMAL INCHES:
X = ±.020
XX = ±.010
XXX = ±.005
FRACTIONAL ±1/64"
ANGLES ±1 DEGREE

SURFACES 32

CLASS: DDGT241

ASSIGNMENT #: 10

INVENTOR DRAWING NAME:

ROBOTIC ARM

FIG #: 1058

MANAGER: G. STROMMEN

DRAFTER: J.LEMUS

DATE: 4/3/2026

SCALE: AS NOTED

PAGE #: 1 OF 5

REV	DATE	DESCRIPTION	APPROVED	SHEET
4	4/23/2026	"SLIDING TUBE BOTTOM" LENGTH CHANGED FROM 4.19" TO 5.19"	G.STROMMEN	4
3	4/23/2026	"ARM E-02" LENGTH CHANGED FROM 3.50" TO 4.00"	G.STROMMEN	3
2	4/23/2026	"ARM E-01" LENGTH CHANGED FROM 4.50" TO 5.00"	G.STROMMEN	3
1	4/23/2026	"BASE E-01" HEIGHT CHANGED FROM 3.00" TO 4.00"	G.STROMMEN	3
REVISION HISTORY				

LEGEND:

- ∅ DIAMETER
- R RADIUS
- ° DEGREES
- ┌ COUNTERBORE/
SPOTFACE
- ∇ DEPTH

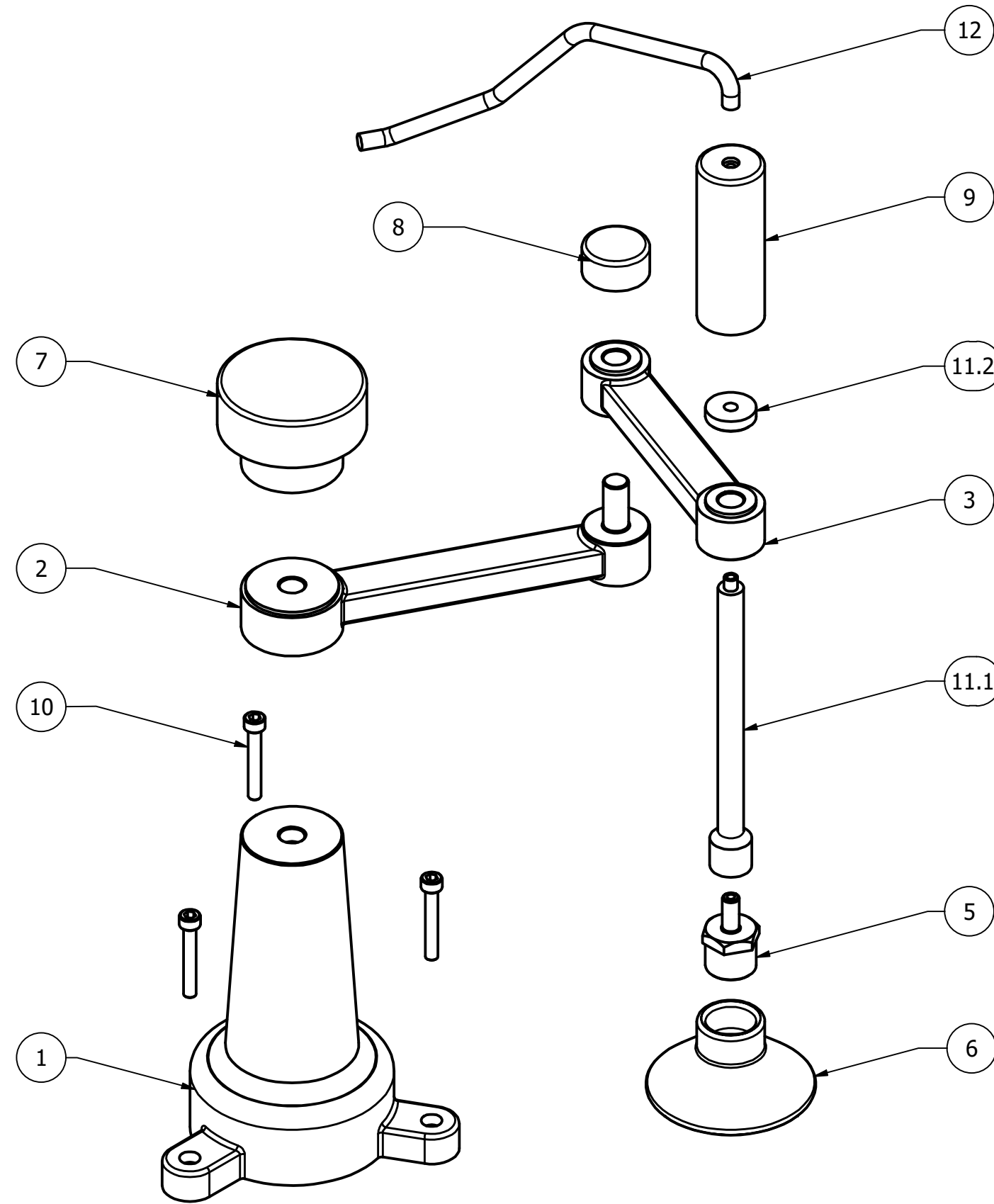
PARTS LIST		
ITEM	QTY	PART NUMBER
1	1	BASE E-01
2	1	ARM E-01
3	1	ARM E-02
5	1	VACUUM CONNECTOR
6	1	VACUUM CUP
7	1	BASE CAP
8	1	ELBOW CAP
9	1	VACUUM CAP
10	3	CAP SCREW
11.1	1	SLIDING TUBE BOTTOM
11.2	1	SLIDING TUBE TOP
12	1	VACUUM TUBE



DIGITAL DESIGN
GRAPHICS
TECHNOLOGY

WWW.DDGT.NET

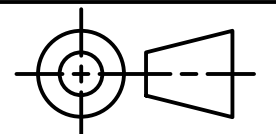
GENERAL NOTES:
ALL FILLETS R.06 UNLESS OTHERWISE NOTED.
ALL CHAMFERS .02 X 45° UNLESS OTHERWISE NOTED.



EXPLODED VIEW
SCALE 1 / 2



Julian Lemus
Drafter
(707)217-6845
jlemus9@gmail.com
<https://ddgt.net/studentpages/jlemus/index.html>



TOLERANCES UNLESS SPECIFIED:
DECIMAL INCHES:
X = ±.020
XX = ±.010
XXX = ±.005
FRACTIONAL ±1/64"
ANGLES ±1 DEGREE

SURFACES 32 ∇

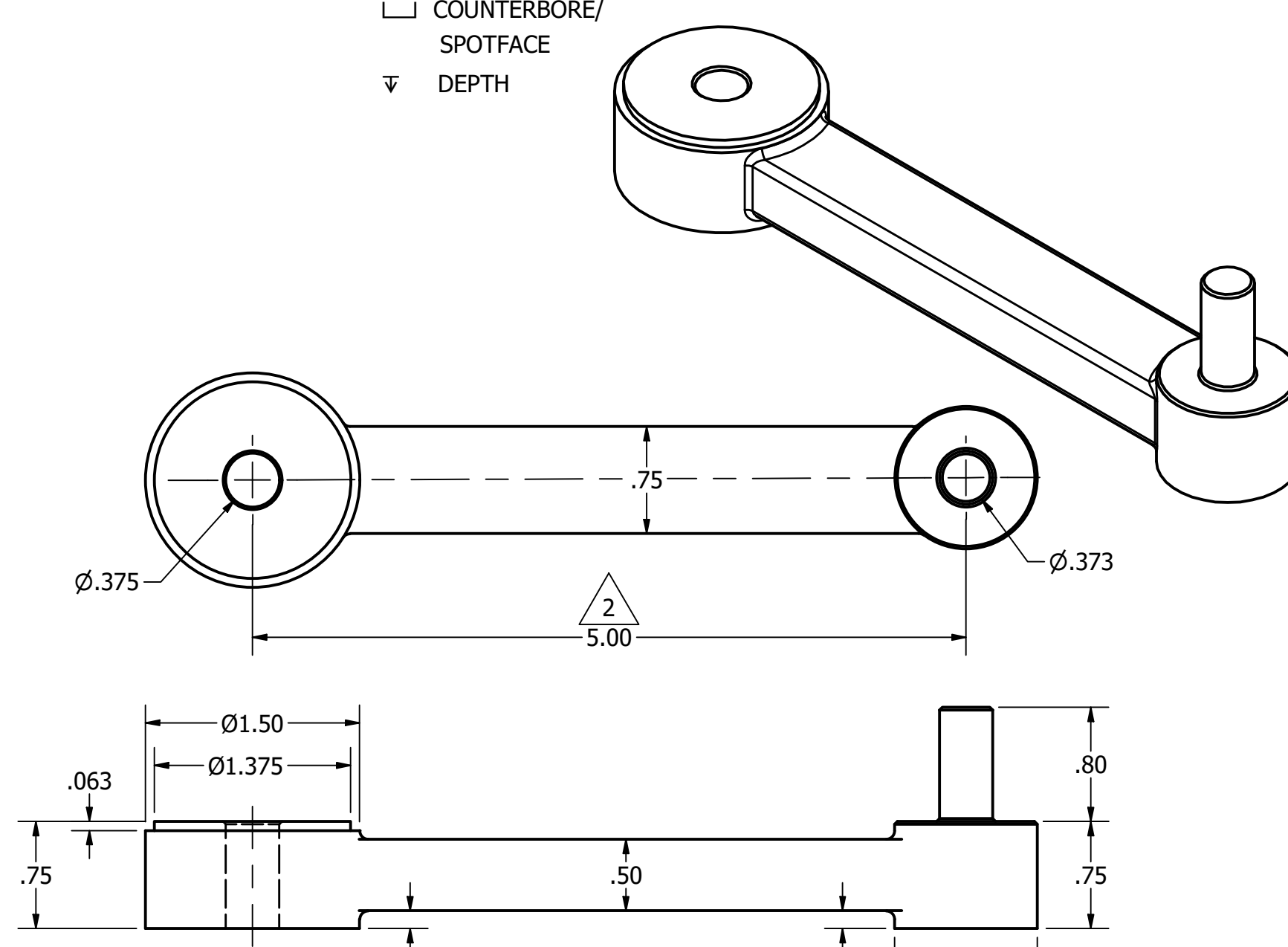
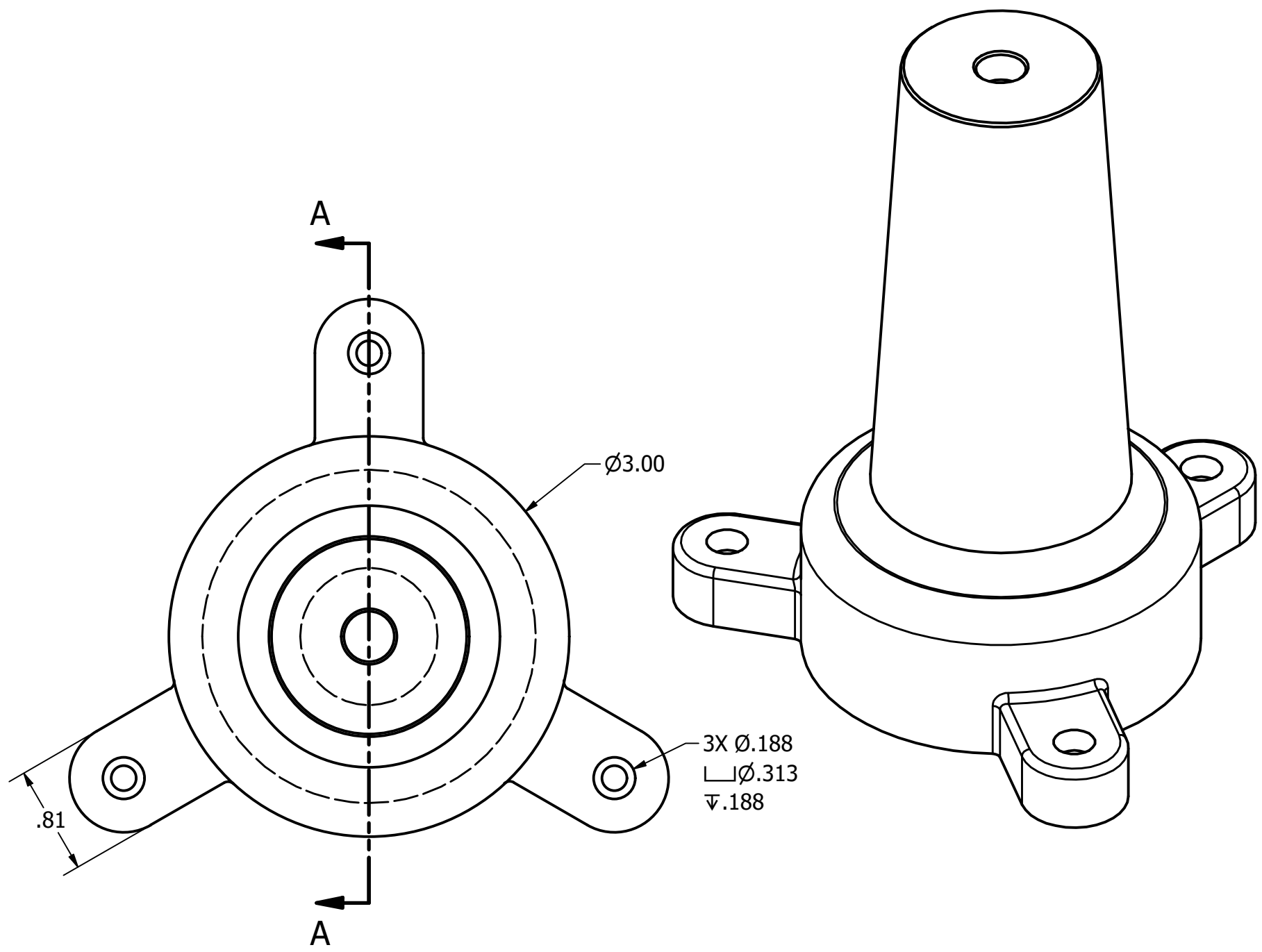
CLASS:	DDGT241
ASSIGNMENT #:	10
INVENTOR DRAWING NAME:	ROBOTIC ARM
FIG #:	1058
MANAGER:	G. STROMMEN
DRAFTER:	J.LEMUS
DATE:	4/3/2026
SCALE:	AS NOTED
PAGE #:	2 OF 5

GENERAL NOTES:
ALL FILLETS R.06 UNLESS OTHERWISE NOTED.
ALL CHAMFERS .02 X 45° UNLESS OTHERWISE NOTED.

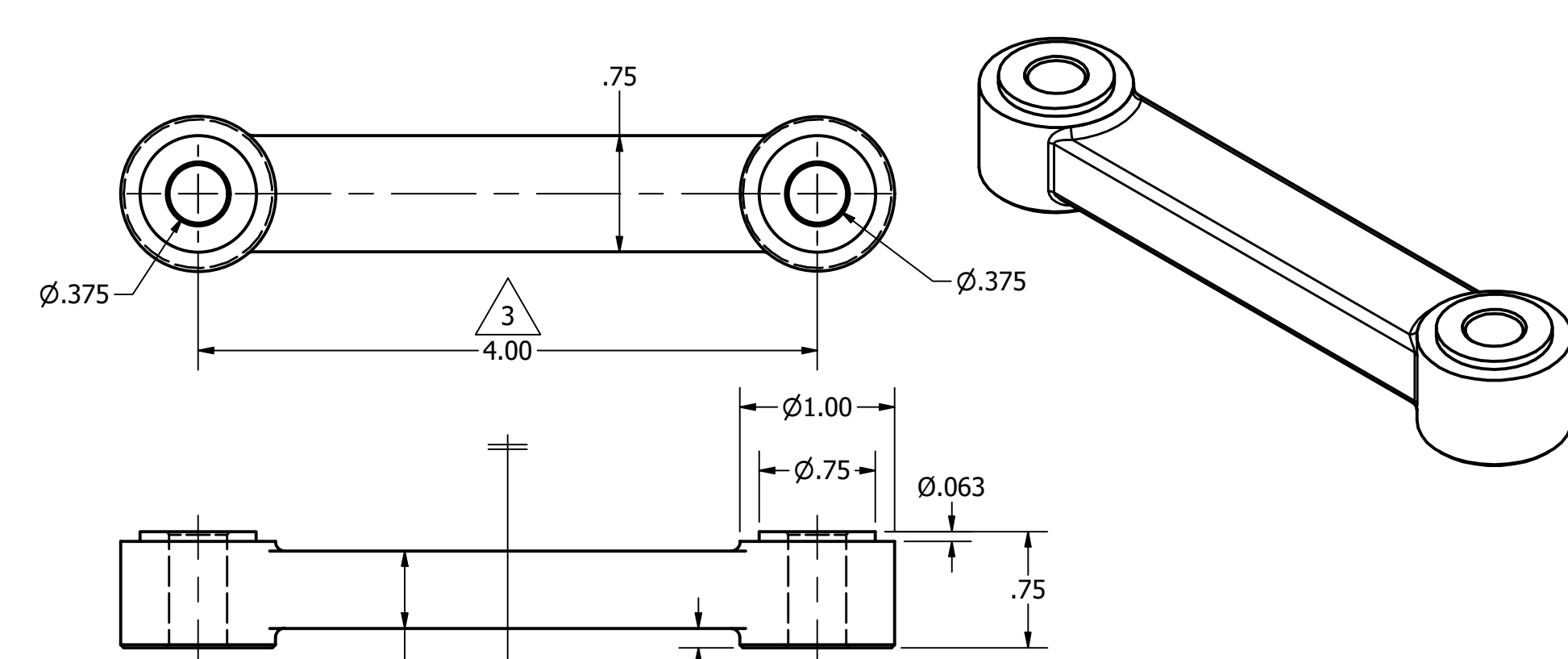
PARTS LIST		
ITEM	QTY	PART NUMBER
1	1	BASE E-01
2	1	ARM E-01
3	1	ARM E-02

LEGEND:

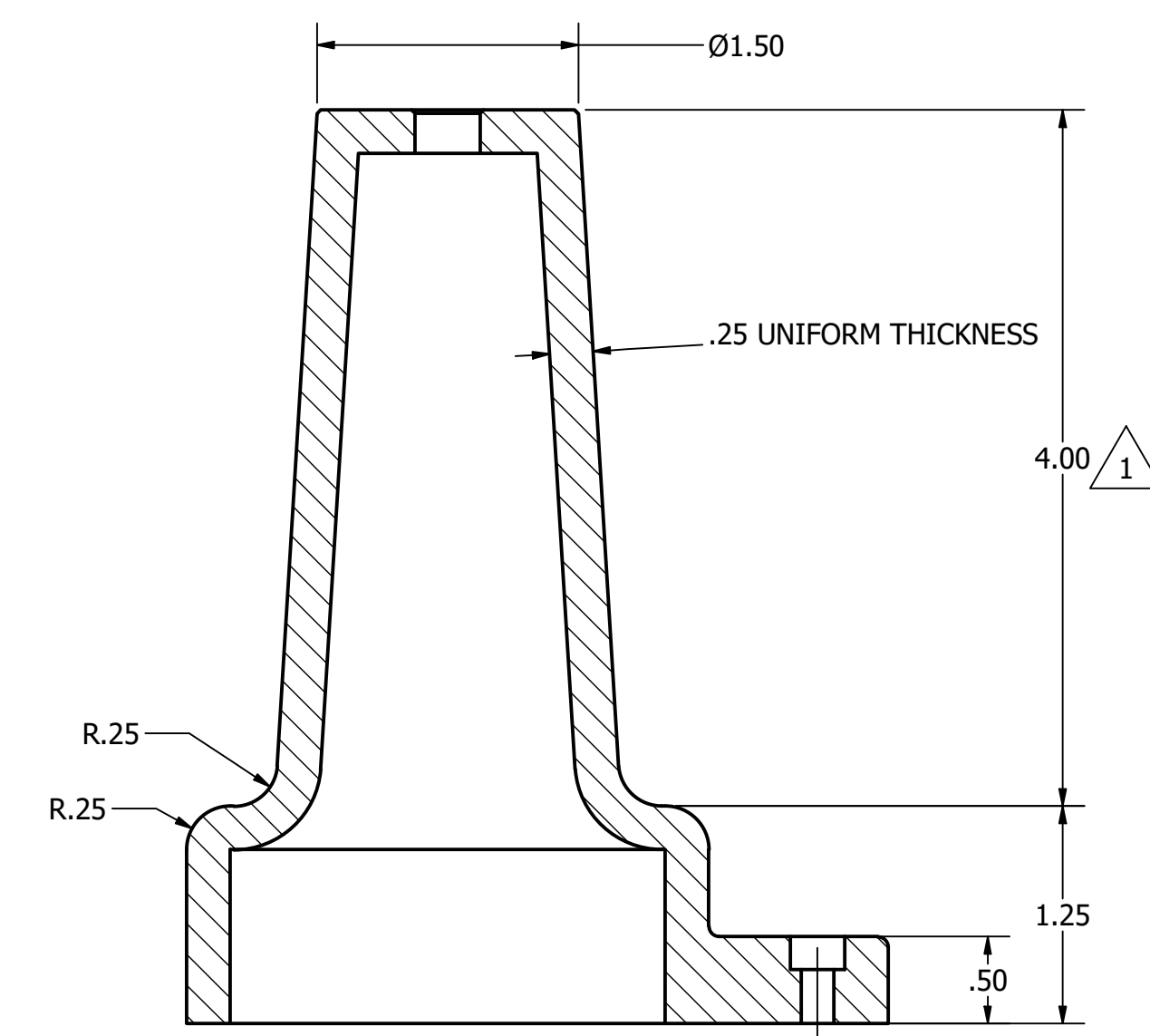
- ∅ DIAMETER
- R RADIUS
- ° DEGREES
- COUNTERBORE/
SPOTFACE
- ▽ DEPTH



ARM E-01
SCALE 1 : 1



ARM E-02
SCALE 1 : 1



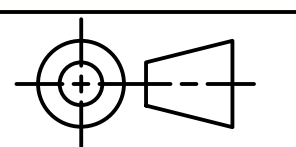
SECTION A-A BASE E-01
SCALE 1 : 1

REV	DATE	DESCRIPTION	APPROVED
3	4/23/2026	"ARM E-02" LENGTH CHANGED FROM 3.50" TO 4.00"	G.STROMMEN
2	4/23/2026	"ARM E-01" LENGTH CHANGED FROM 4.50" TO 5.00"	G.STROMMEN
1	4/23/2026	"BASE E-01" HEIGHT CHANGED FROM 3.00" TO 4.00"	G.STROMMEN

REVISION HISTORY



Julian Lemus
Drafter
(707)217-6845
jlemus9@gmail.com
<https://ddgt.net/studentpages/jlemus/index.html>



TOLERANCES UNLESS SPECIFIED:
DECIMAL INCHES:
X = ±.020
XX = ±.010
XXX = ±.005
FRACTIONAL ±1/64"
ANGLES ±1 DEGREE
SURFACES 32

CLASS:	DDGT241
ASSIGNMENT #:	10
INVENTOR DRAWING NAME:	ROBOTIC ARM
FIG #:	1058
MANAGER:	G. STROMMEN
DRAFTER:	J.LEMUS
DATE:	4/3/2026
SCALE:	AS NOTED
PAGE #:	3 OF 5



DIGITAL DESIGN
GRAPHICS
TECHNOLOGY

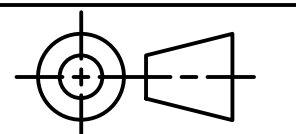
WWW.DDGT.NET

GENERAL NOTES:
ALL FILLETS R.06 UNLESS
OTHERWISE NOTED.

ALL CHAMFERS .02 X 45°
UNLESS OTHERWISE
NOTED.



Julian Lemus
Drafter
(707)217-6845
jlemus9@gmail.com
<https://ddgt.net/studentpages/jlemus/index.html>



TOLERANCES UNLESS SPECIFIED:
DECIMAL INCHES:
X = ±.020
XX = ±.010
XXX = ±.005
FRACTIONAL ±1/64"
ANGLES ±1 DEGREE

SURFACES 32

CLASS: DDGT241

ASSIGNMENT #: 10

INVENTOR DRAWING NAME:

ROBOTIC ARM

FIG #: 1058

MANAGER: G. STROMMEN

DRAFTER: J. LEMUS

DATE: 4/3/2026

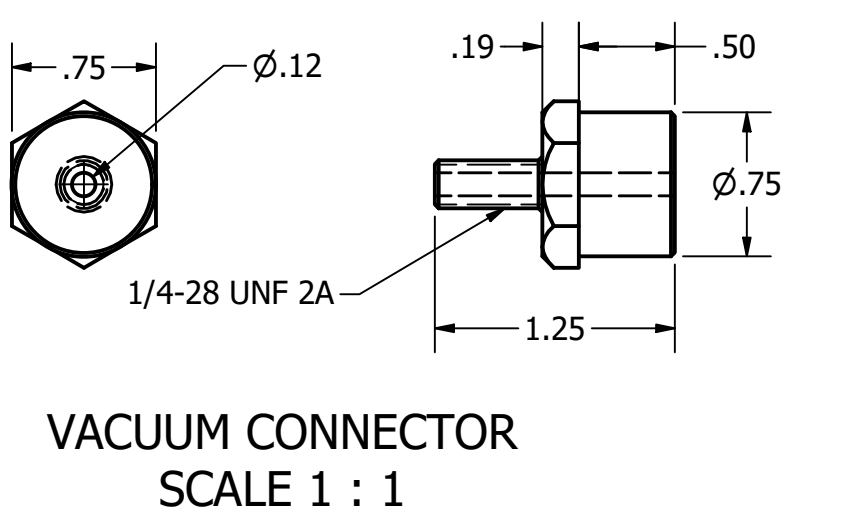
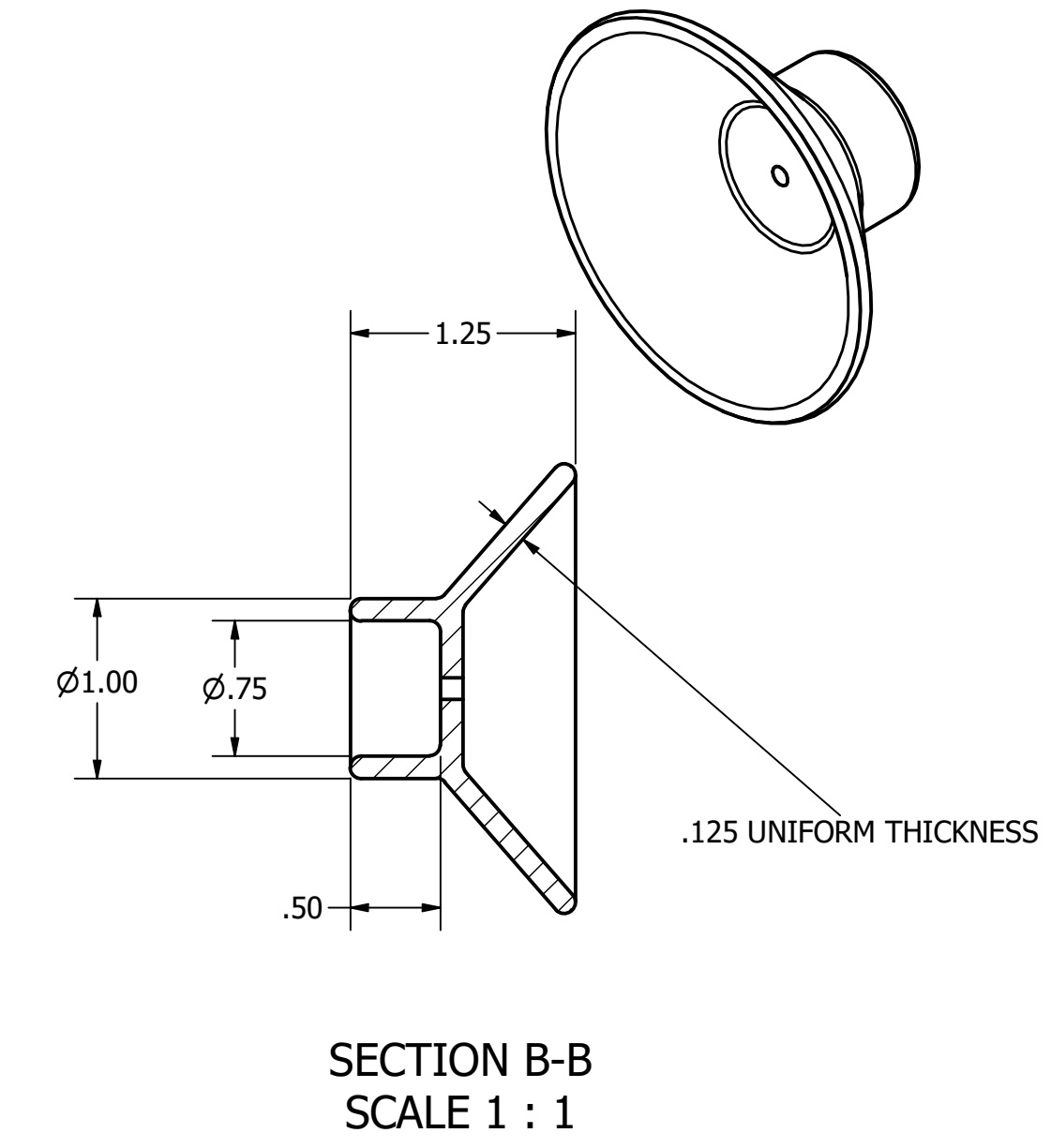
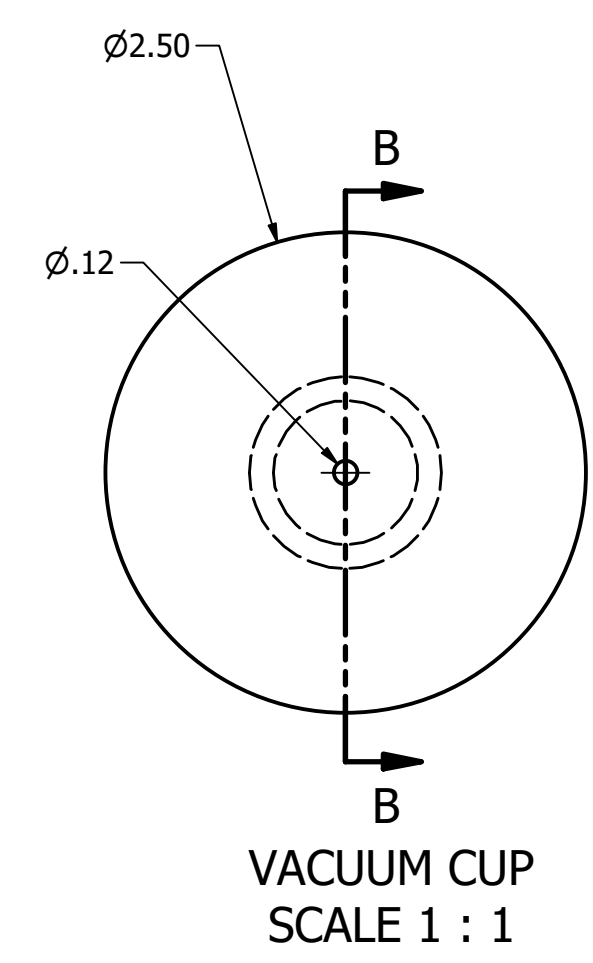
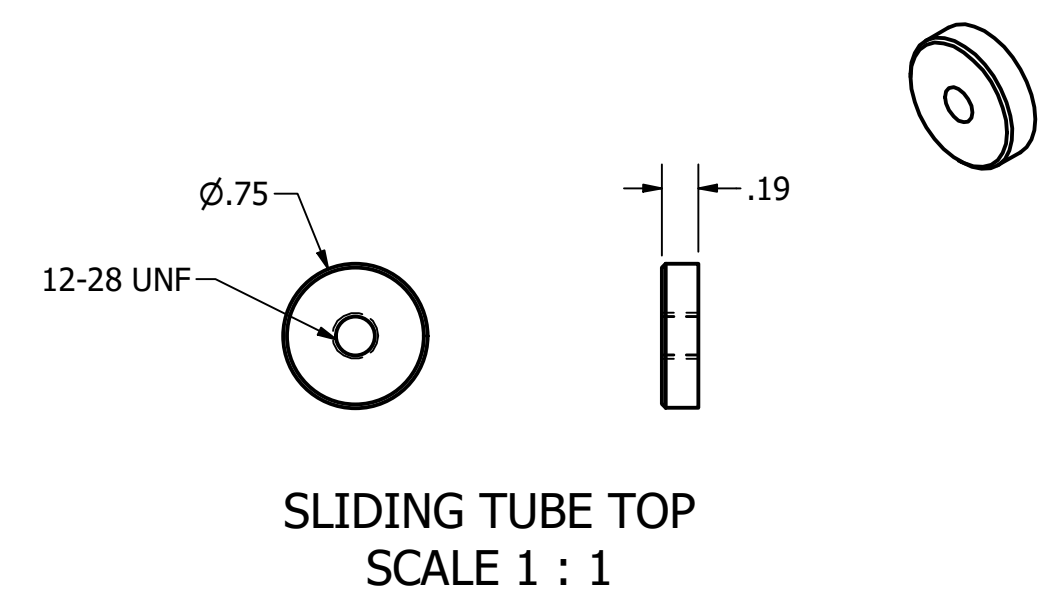
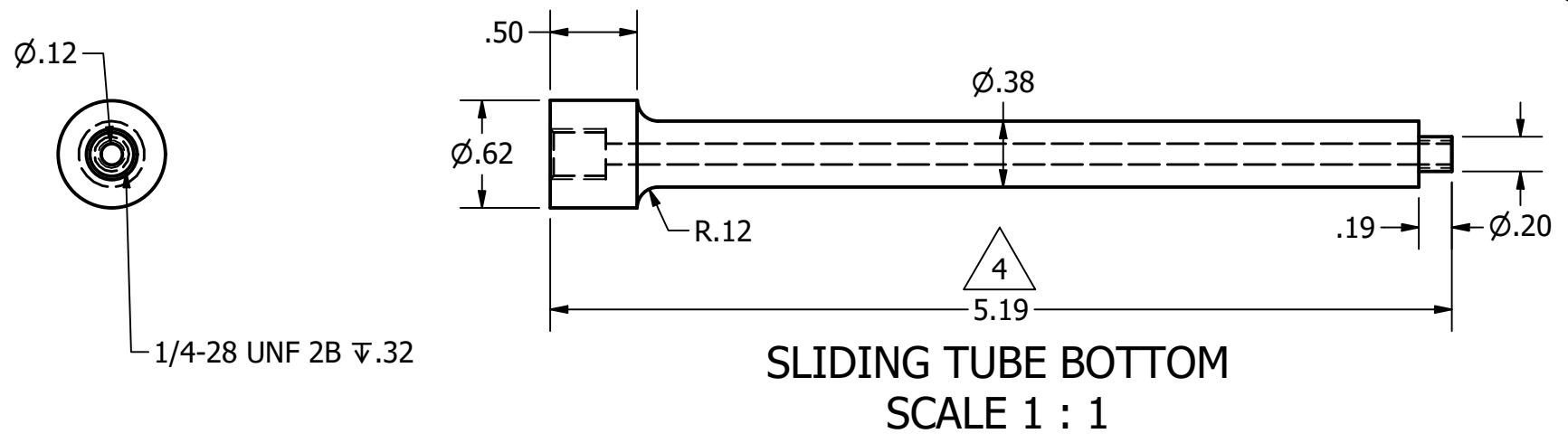
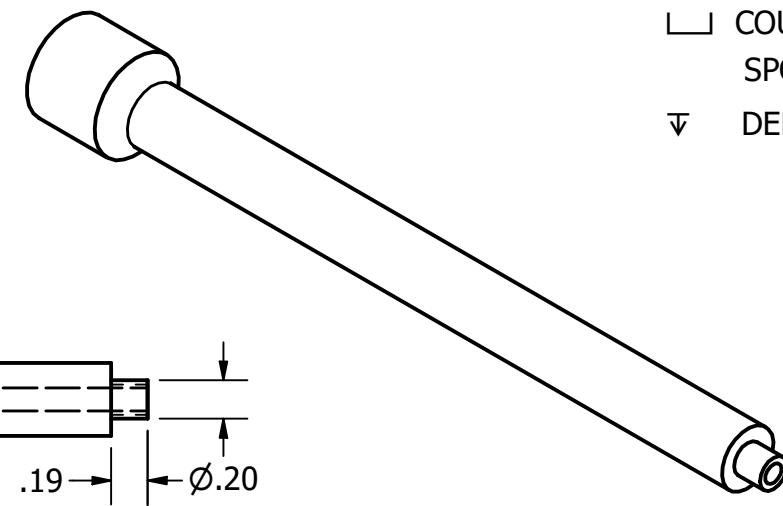
SCALE: AS NOTED

PAGE #: 4 OF 5

PARTS LIST		
ITEM	QTY	PART NUMBER
5	1	VACUUM CONNECTOR
6	1	VACUUM CUP
11.1	1	SLIDING TUBE BOTTOM
11.2	1	SLIDING TUBE TOP

LEGEND:

- ∅ DIAMETER
- R RADIUS
- ° DEGREES
- ┌ COUNTERBORE/
SPOTFACE
- ▽ DEPTH



REV	DATE	DESCRIPTION	APPROVED
4	4/23/2026	"SLIDING TUBE BOTTOM" LENGTH CHANGED FROM 4.19" TO 5.19"	G.STROMMEN

REVISION HISTORY

