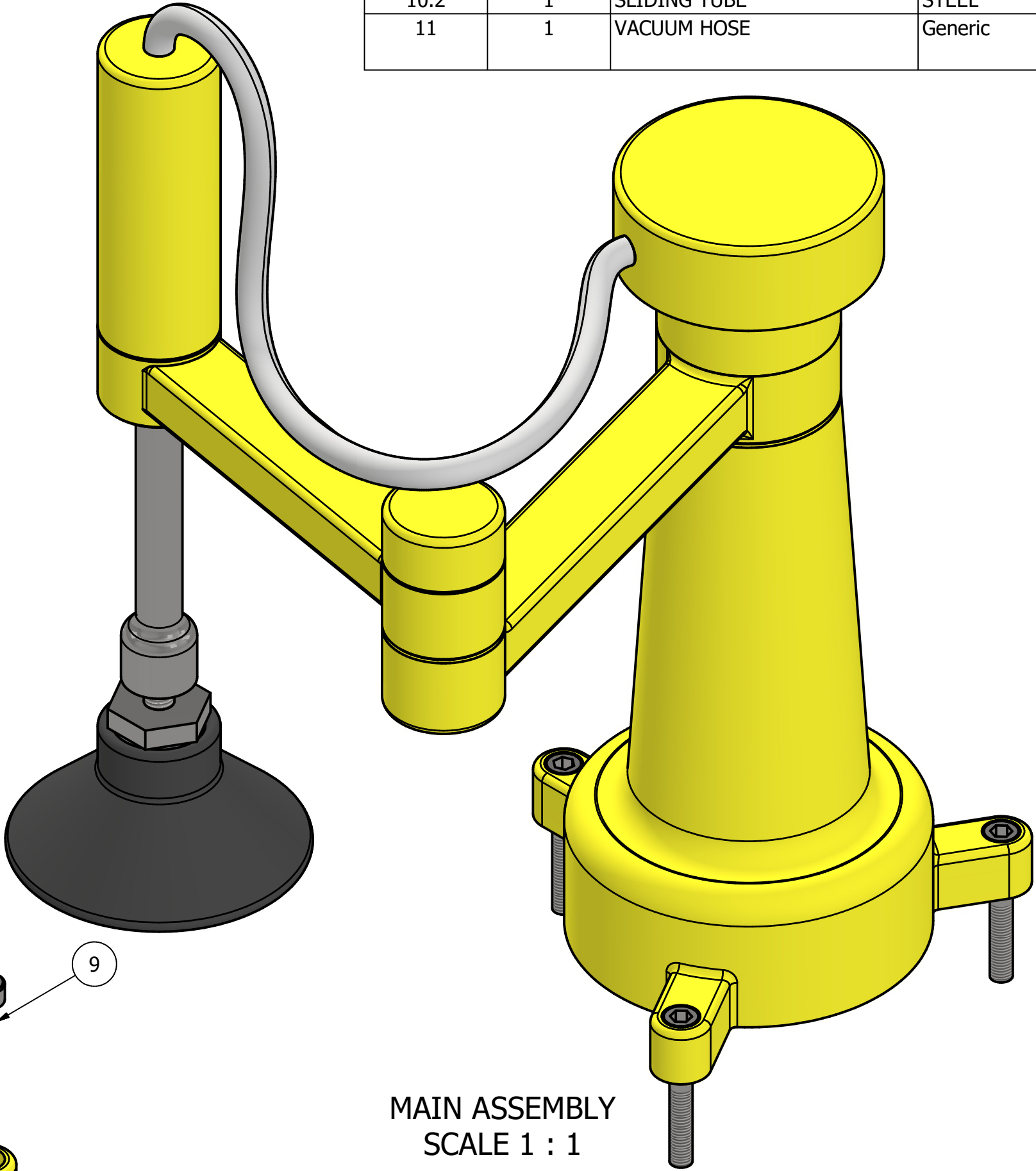
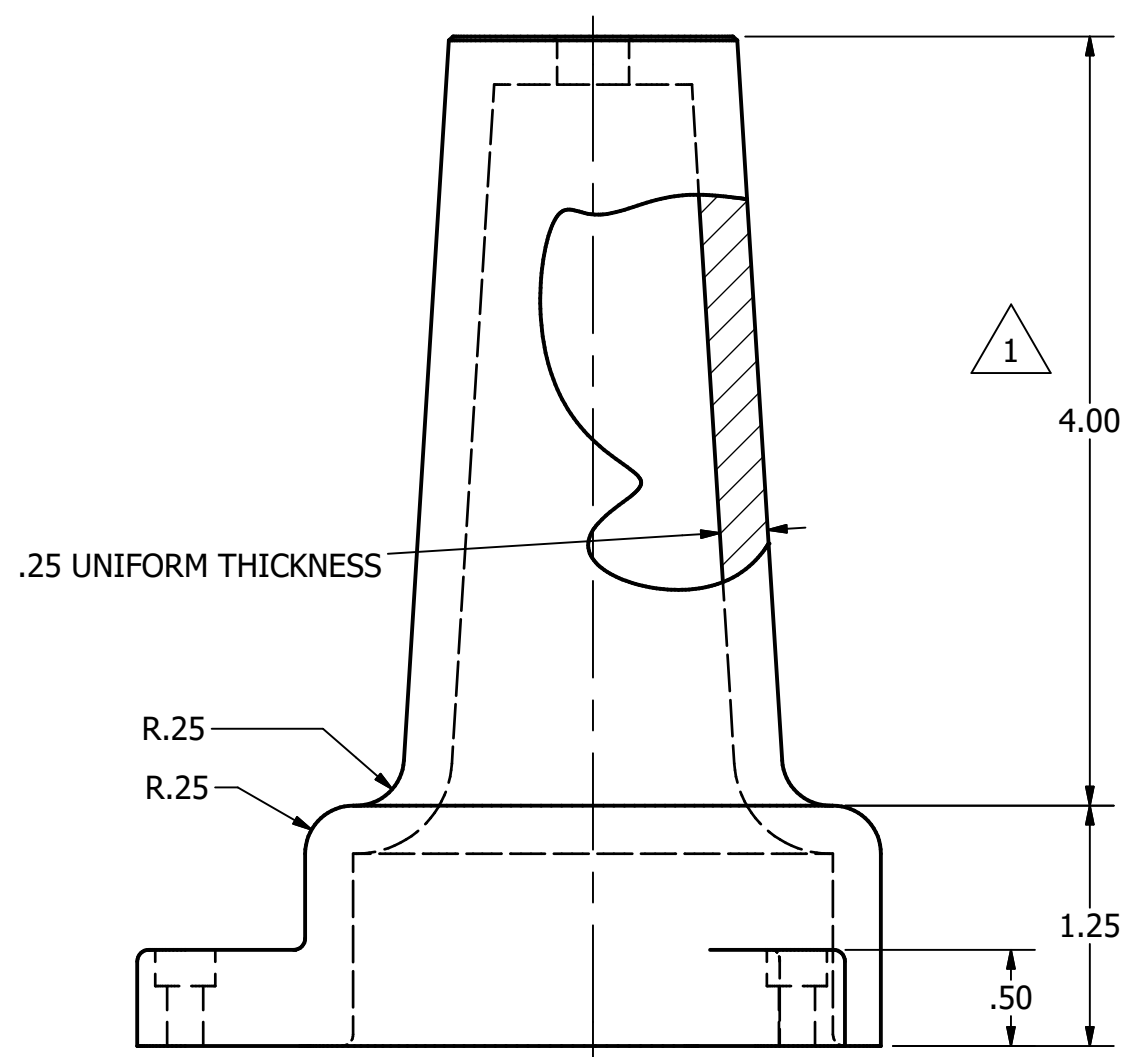
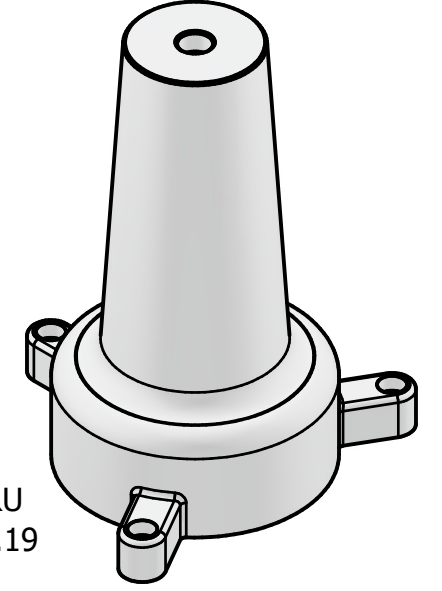
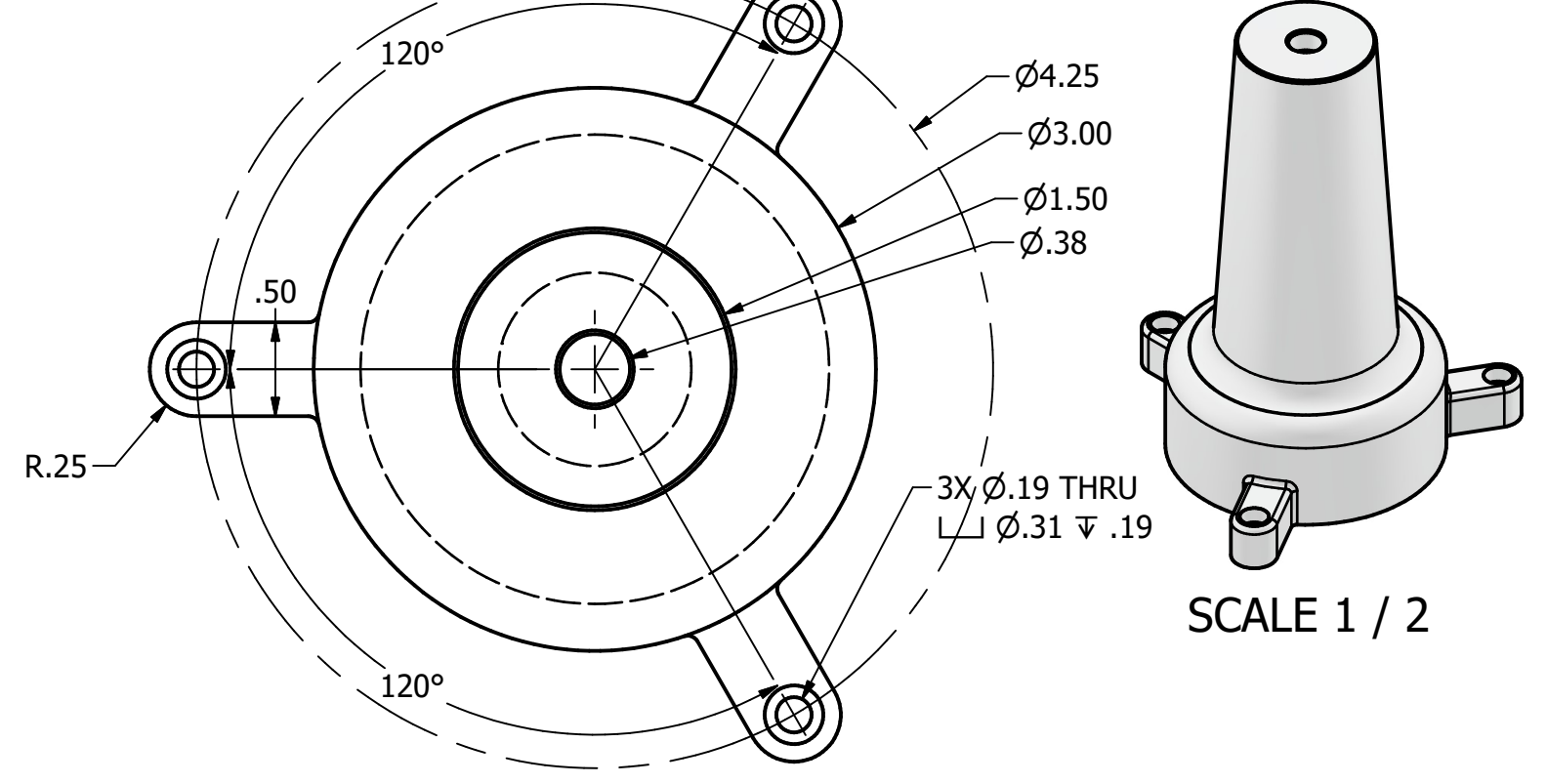
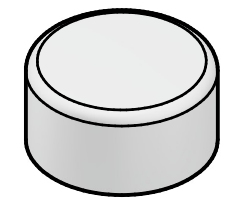
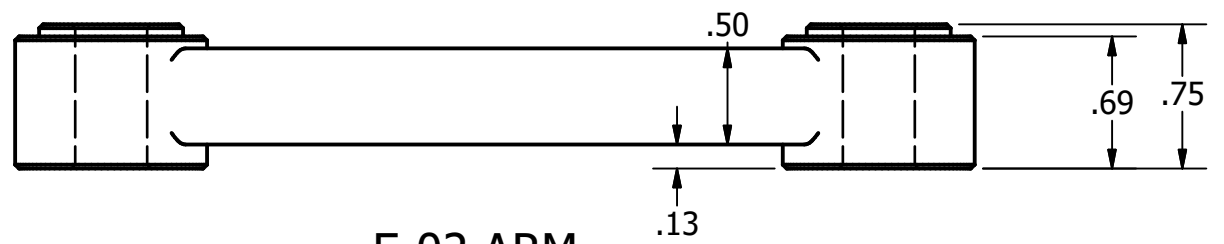
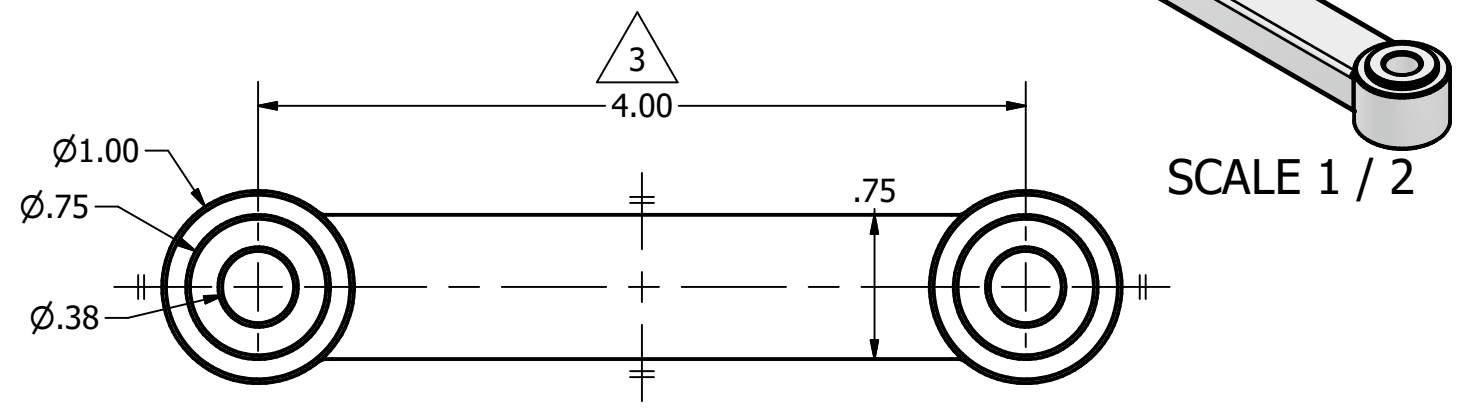
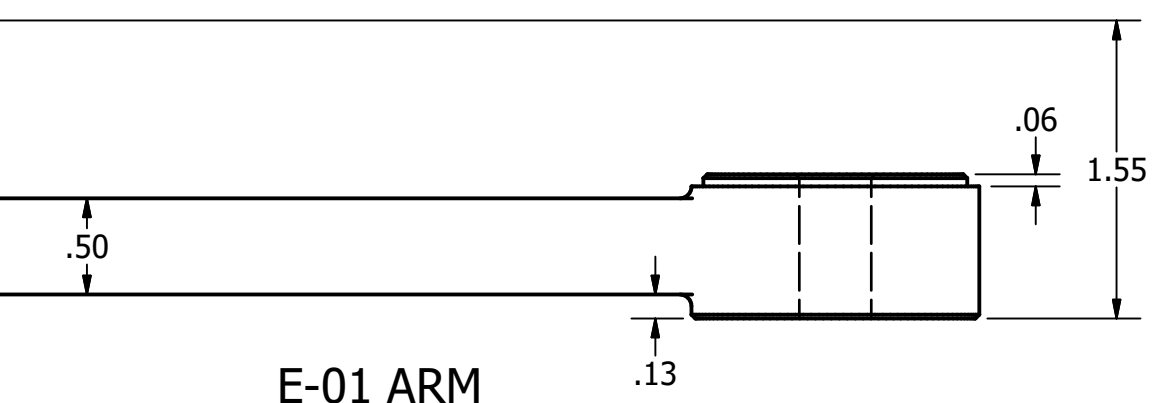
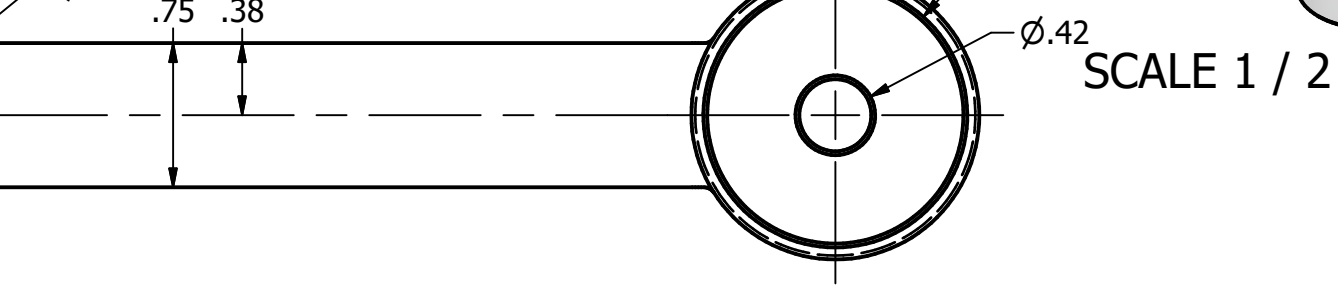


9	3	VACUUM SCREW	STEEL	10-36 UNS X 1.25 LONG
10	1	SLIDING TUBE ASSEMBLY		
10.1	1	SLIDING TUBE CAP	STEEL	
10.2	1	SLIDING TUBE	STEEL	
11	1	VACUUM HOSE	Generic	∅.25 OD, ∅.125 ID, 12.00 LENGTH

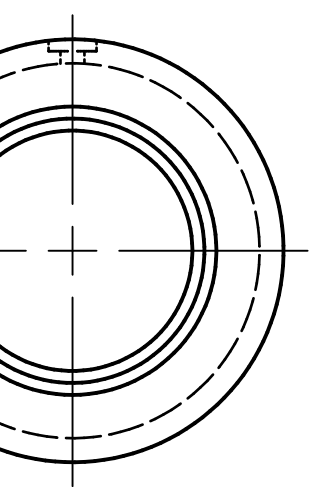
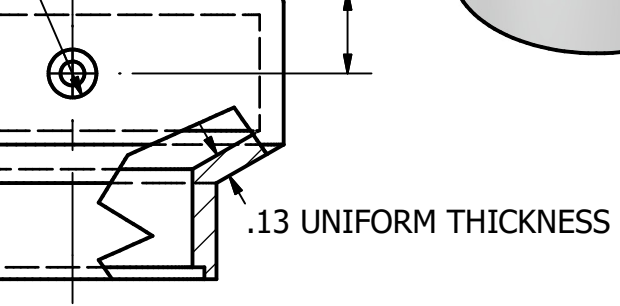


MAIN ASSEMBLY
SCALE 1 : 1

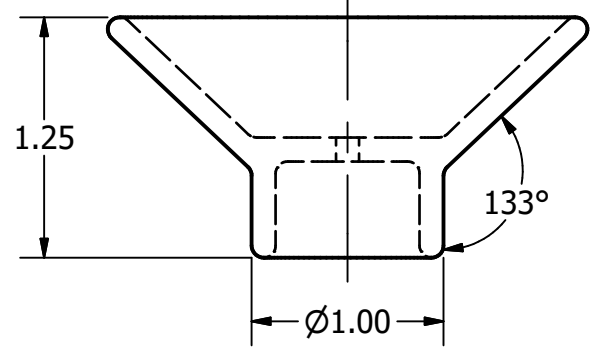
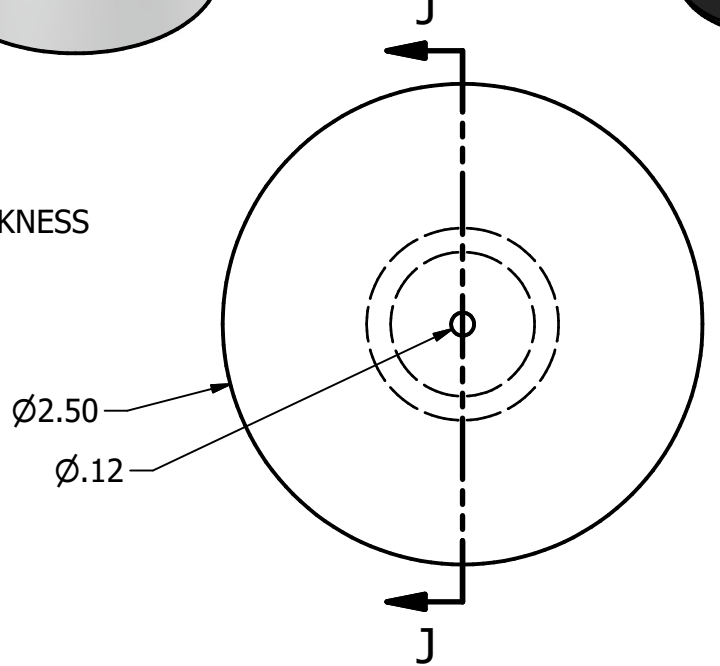
5	15-APR-26	LENGTH OF SLIDING TUBE INCREASED FROM 4.19 TO 5.19	G. STROMMEN	3
---	-----------	--	-------------	---



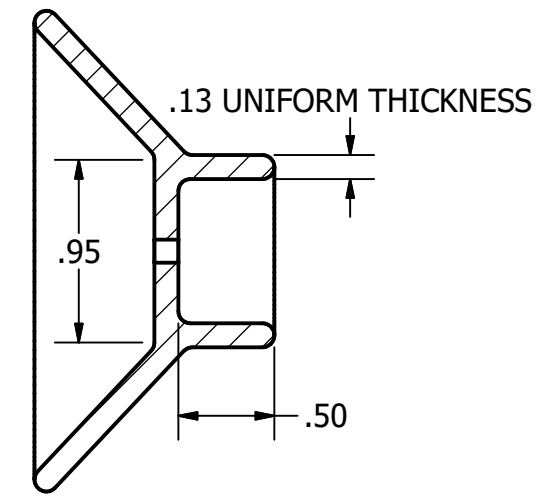
BASE
SCALE 1 : 1



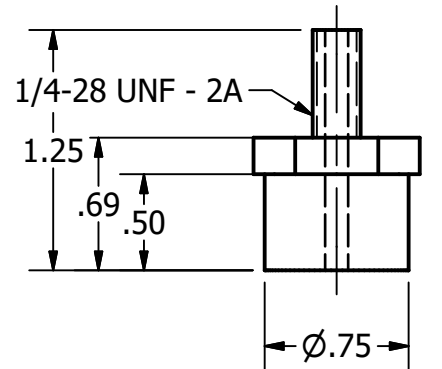
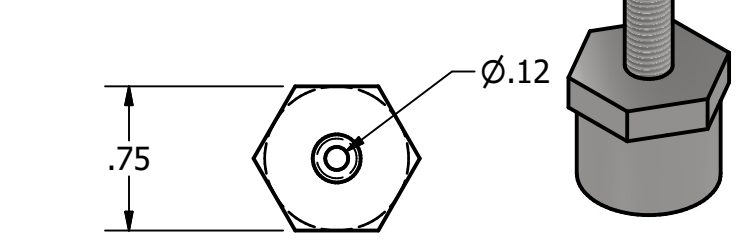
BASE CAP
SCALE 1 : 1



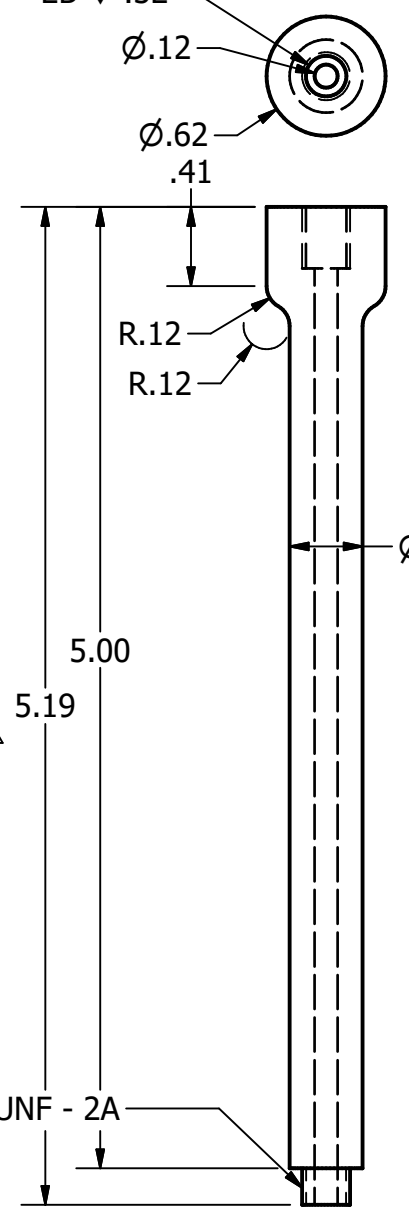
VACUUM CUP
SCALE 1 : 1



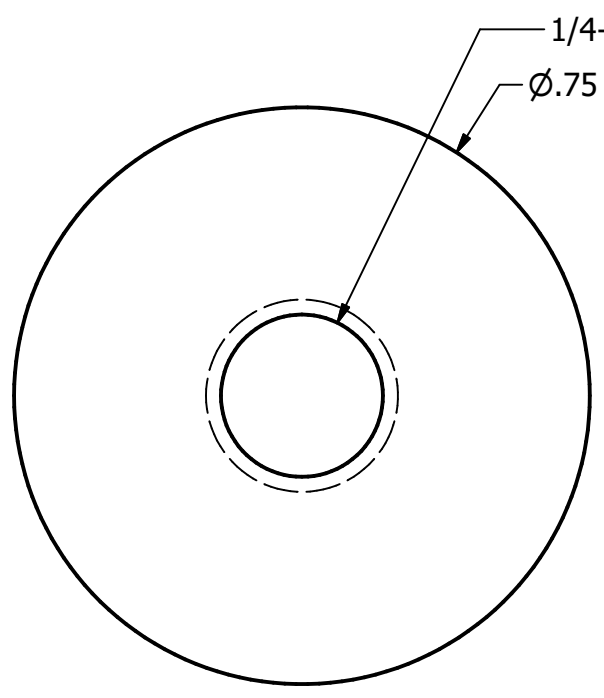
SECTION J-J
SCALE 1 : 1



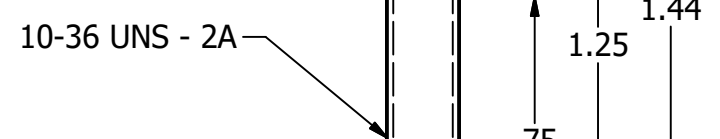
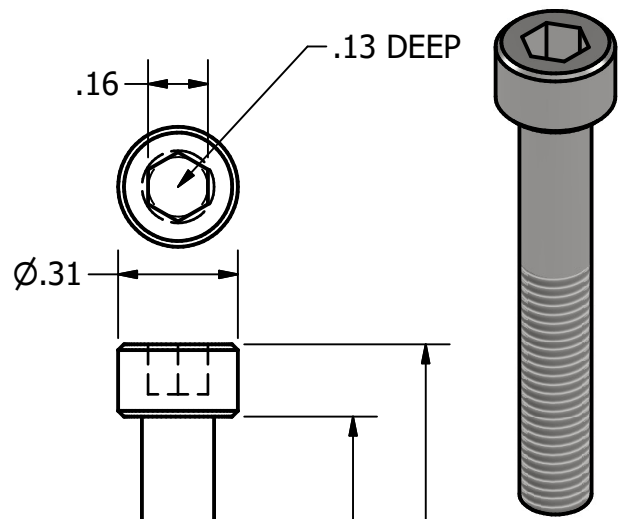
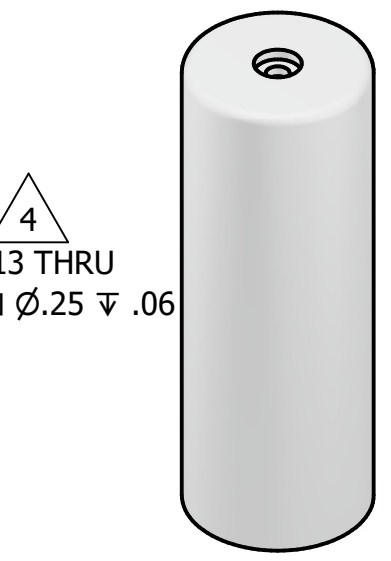
VACUUM CONNECTOR
SCALE 1 : 1



SLIDING TUBE
SCALE 1 : 1



SLIDING TUBE CAP
SCALE 4 : 1



LEGEND:

- \varnothing DIAMETER
- R RADIUS
- ° DEGREES

□ COUNTERBORE /
PROTECTOR