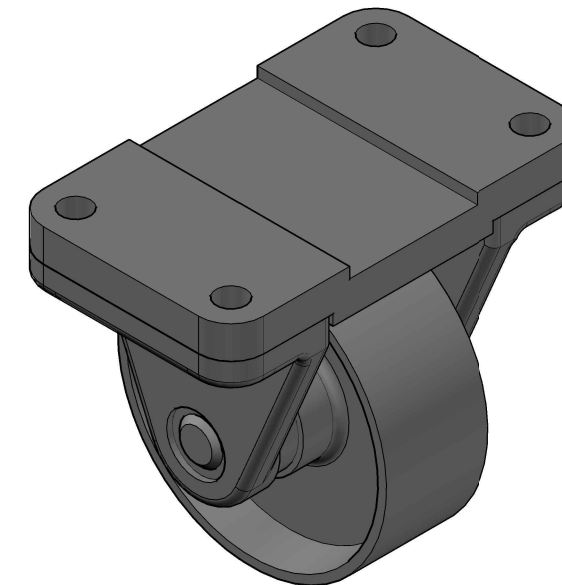
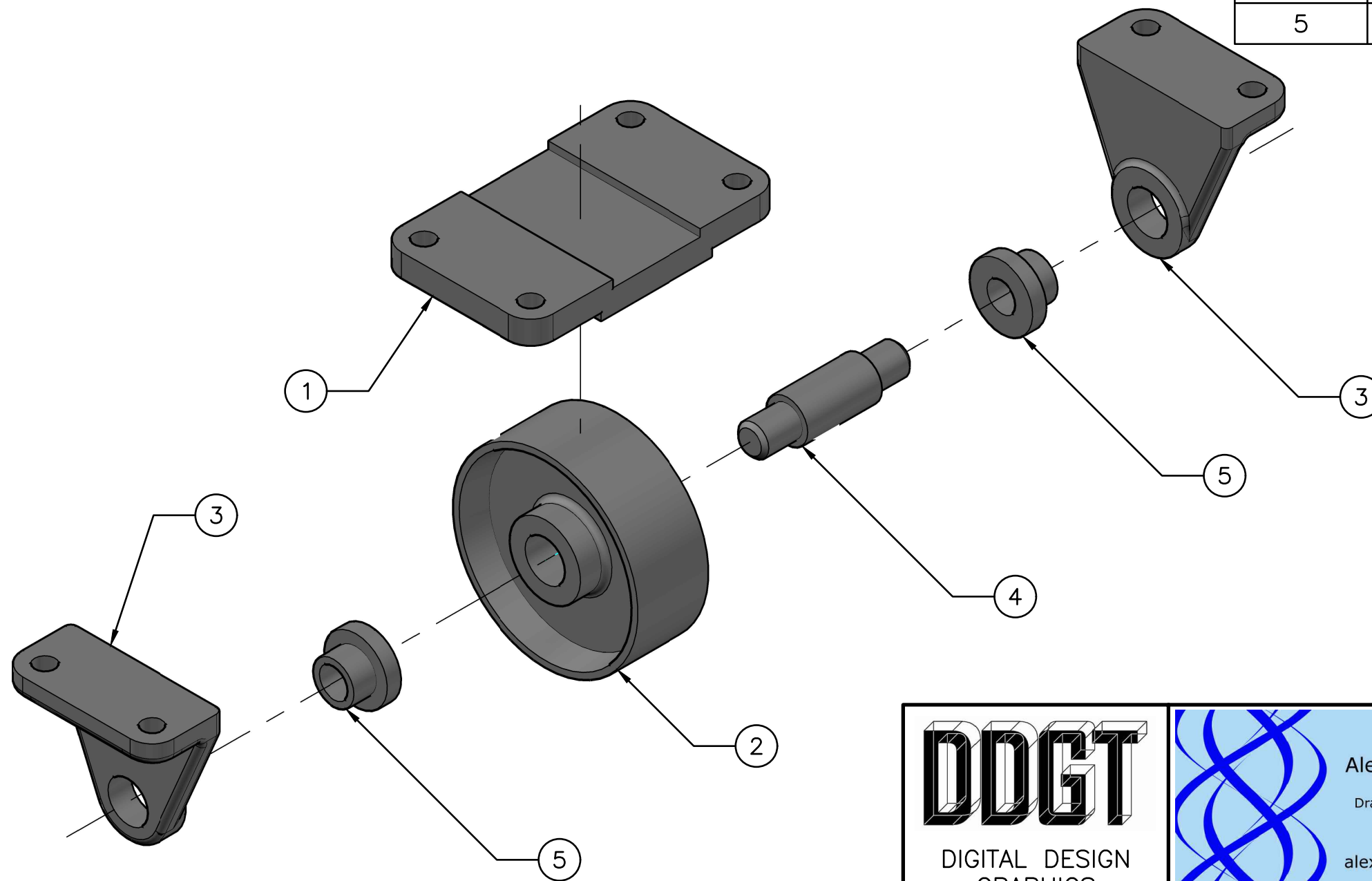


FIT	BETWEEN PARTS
H8/f7	4 AND 5
H7/p6	3 AND 5
H8/f7	2 AND 4

PARTS LIST			
ITEM #	QTY.	PART NAME	MATERIAL
1	1	TOP PLATE	MALLEABLE IRON
2	1	WHEEL	MALLEABLE IRON
3	2	AXLE SUPPORT	MALLEABLE IRON
4	1	AXLE	SAE 1020
5	2	BUSHING	BRONZE

CASTER EXPLODED ASSEMBLY

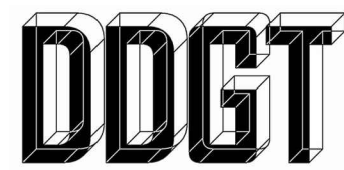
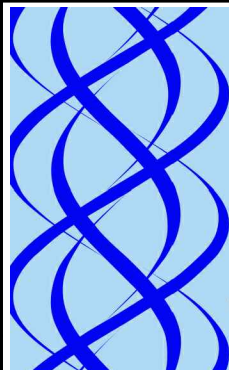
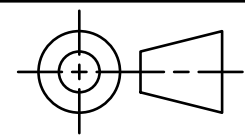


METRIC

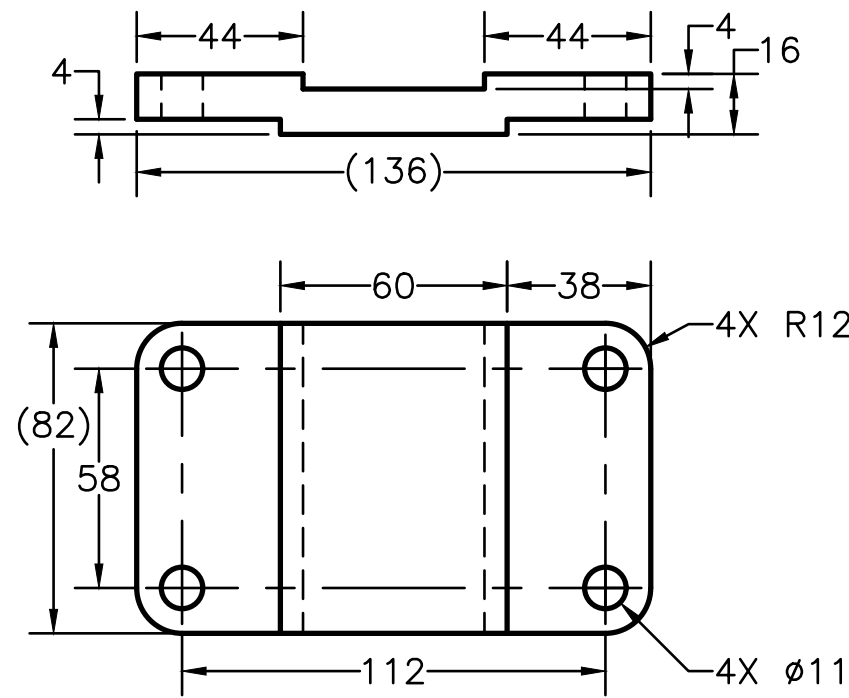
CASTER ASSEMBLY

LEGEND:

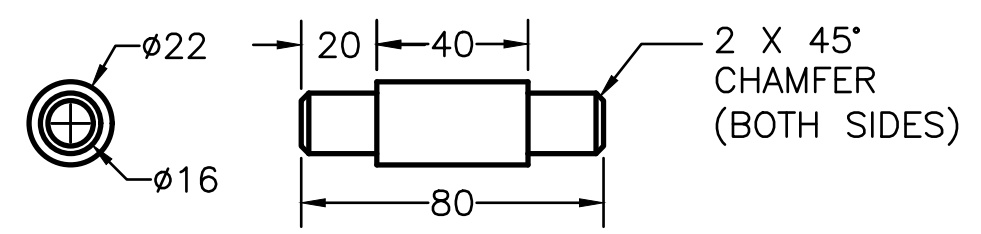
- ° DEGREES
- ∅ DIAMETER
- R RADIUS
- | SPOTFACE

 DIGITAL DESIGN GRAPHICS TECHNOLOGY WWW.DDGT.NET	 Alexandar Kuykendall Draftsman and Graphic Designer (707) 980-5920 alexjkuykendall@gmail.com www.ddgt.net/StudentPages/akuykendall	 TOLERANCES UNLESS SPECIFIED DECIMAL INCHES: X = ±.020 XX = ±.010 XXX = ±.005 FRACTIONAL ± 1/64" ANGLES ±1 DEGREE SURFACES 32/√	COURSE: DDGT 120
			AUTOCAD DRAWING NAME: CASTER
			FIG#: 9-51
			DRAFTER: A. KUYKENDALL
			DATE: 10/27/15
			SCALE: 1:2
			PAGE #: 1 OF 2

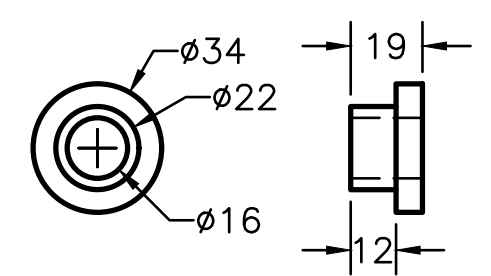
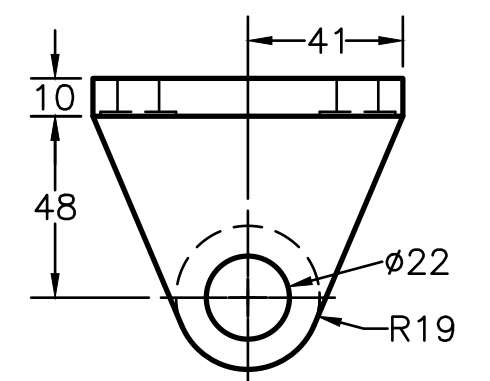
PARTS LIST		
ITEM #	QTY.	PART NAME
1	1	TOP PLATE
2	1	WHEEL
3	2	AXLE SUPPORT
4	1	AXLE
5	2	BUSHING



TOP PLATE

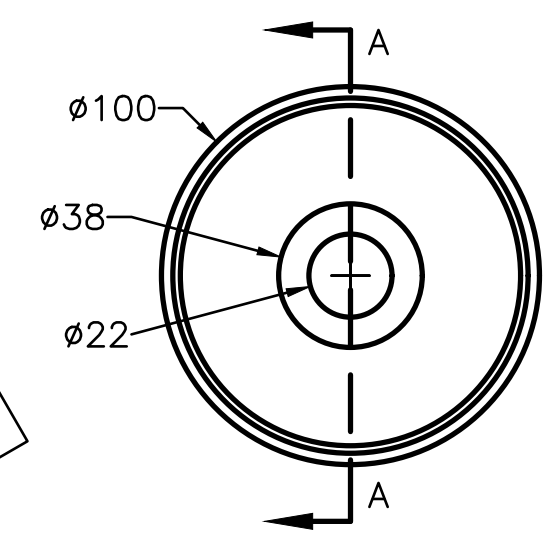


AXLE

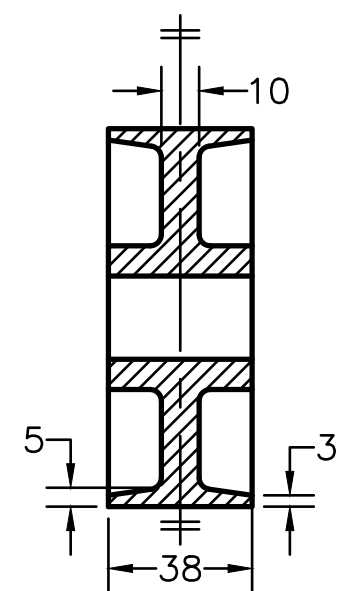


BUSHING

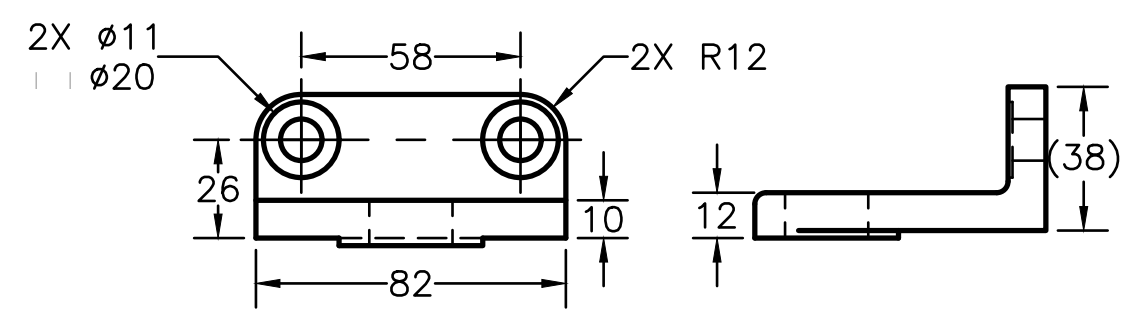
METRIC



WHEEL



SECTION A-A



AXLE SUPPORT

METRIC

LEGEND:

- ° DEGREES
- Ø DIAMETER
- R RADIUS
- | SPOTFACE

GENERAL NOTES:

FASTEN ASSEMBLY TO A 6mm STEEL PLATE BY FOUR M10 X 40mm LG HEX HD BOLTS, NUTS AND LOCK WASHERS.
 ROUNDS AND FILLETS R3 UNLESS NOTED

<p>DDGT DIGITAL DESIGN GRAPHICS TECHNOLOGY WWW.DDGT.NET</p>	<p>Alexzander Kuykendall Draftsman and Graphic Designer (707) 980-5920 alexjkuykendall@gmail.com www.ddgt.net/StudentPages/akuykendall</p>	<p>TOLERANCES UNLESS SPECIFIED DECIMAL INCHES: X = ±.020 XX = ±.010 XXX = ±.005 FRACTIONAL ± 1/64" ANGLES ±1 DEGREE SURFACES 32/√</p>	COURSE: DDGT 120
			AUTOCAD DRAWING NAME: CASTER
		FIG#: 9-51	DRAFTER: A. KUYKENDALL
		DATE: 10/27/15	SCALE: 1:2
		PAGE #: 2 OF 2	